



ASX ANNOUNCEMENT

Date: 15 January 2013

ASX: IPT

Number: 250/150113

IMPACT EARNS 51% INTEREST IN THE XADE Cu-Ni-PGE PROJECT, BOTSWANA

Impact Minerals Limited (ASX: IPT) is pleased to announce that it has earned a 51% participating interest in the Xade Nickel-Copper-PGE project in Botswana where drilling is in progress.

The Xade Project covers a poorly explored gabbro intrusion (the Xade Complex) in central Botswana with excellent potential to host deposits of copper-nickel sulphides and PGEs. The project is close to excellent infrastructure and the World Class Orapa diamond mine (Figure 1).

Impact entered into an option agreement with private company Manica Minerals Limited (Manica) to spend US\$1.2 million over two years to earn a 51% interest in the Xade project and this requirement has now been met.

Impact has until the 19th February 2013 to elect to proceed to a Joint Venture with Manica and a further 90 days to elect to increase its interest in the project to 75% by defining an Indicated Mineral Resource.

Drilling commenced at the Xade project in November 2012. To date, three of five planned pre-collars to test areas of interest identified from airborne magnetic data and geochemistry studies have been completed and a fourth is in progress (Figures 2 and 3). Diamond drilling has been completed at one hole and detailed interpretation of the core is in progress.

Dr Michael G Jones
Managing Director

The review of exploration activities and results contained in this report is based on information compiled by Dr Mike Jones, a Member of the Australian Institute of Geoscientists. He is a director of the company and works for Impact Minerals Limited. He has sufficient experience which is relevant to the style of mineralisation and types of deposits under consideration and to the activity which he is undertaking to qualify as a Competent Person as defined in the December 2004 edition of the Australasian Code for reporting of Exploration Results, Mineral Resources and Ore Reserves (the JORC Code). Mike Jones has consented to the inclusion in the report of the matters based on his information in the form and context in which it appears.

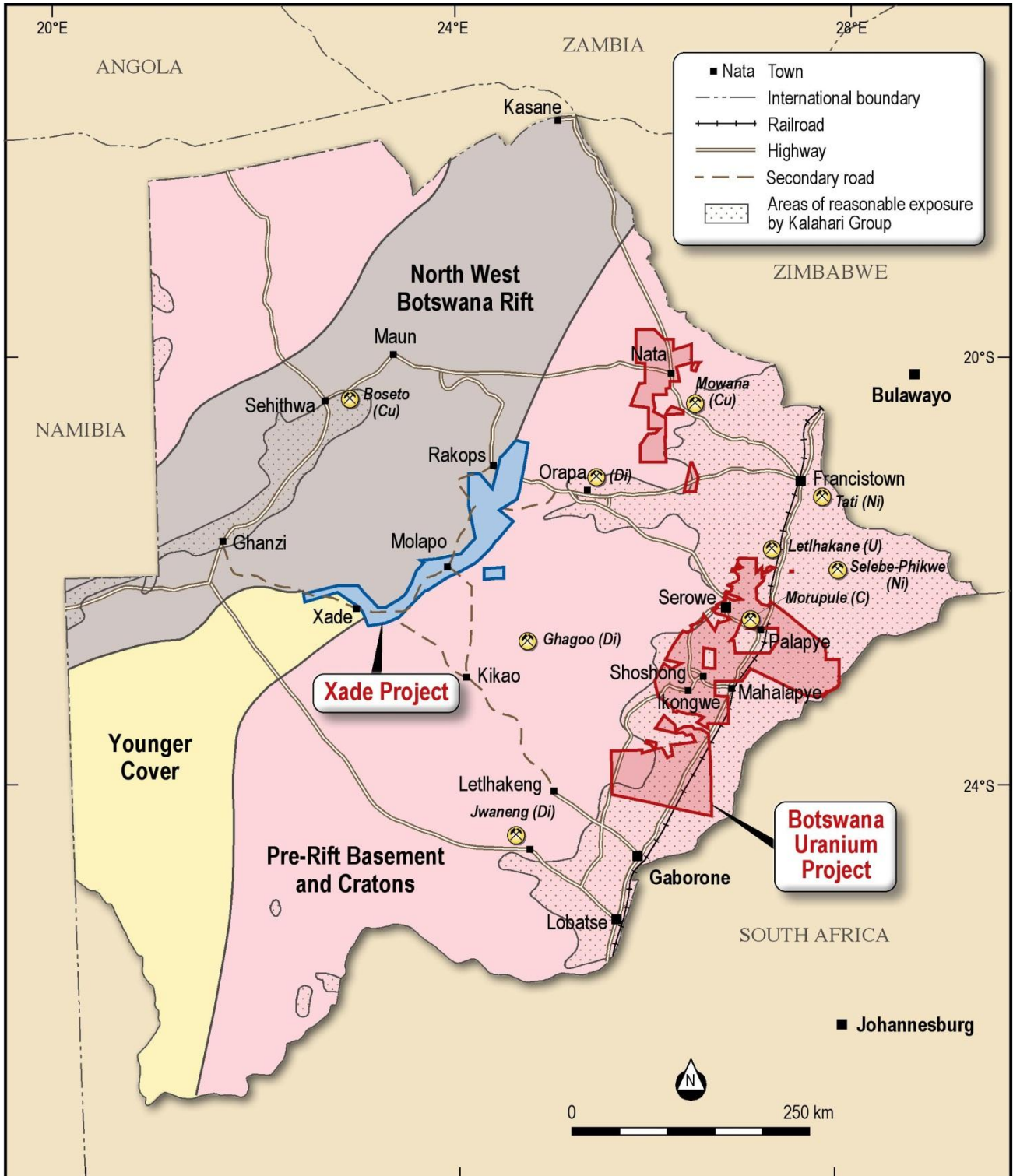


Figure 1. Location of Impact's Projects in Botswana.



Figure 2. Drilling in Progress.



Figure 3. Logging of drill chips.

