



**Exploring for Major Discoveries in
World Class Terranes**

Why invest in Impact Minerals: Big chance of success in 2021

1. Broken Hill, New South Wales (IPT 100%)

- Home to the giant **Broken Hill** silver-lead-zinc deposit (>300 Mt)
- Large strategic ground holding of **815 sq km**. **Drilling in progress.**
- Highest platinum group metal (PGM) grades in Australia discovered by Impact:
- Potential for **major nickel-copper-PGM** mining camp over a 40 km belt.

815 sq km

Large strategic
ground holding

2. Commonwealth, NSW (IPT: 100%)

- Large strategic ground holding of **902 sq km** close to recent **Boda** discovery and large copper-gold deposits of the Lachlan Fold Belt.
- Potential for giant copper-gold deposits like Cadia (>40 Moz Au, >10 Mt Cu) and VMS deposits like Eskay Creek (4 million oz Au, 180 million oz Ag)
- Significant copper-gold target defined at Apsley to be drilled Q1 2021

902 sq km

Large strategic
ground holding

3. Other Projects (IPT 100%)

- **Arkun, WA:** Large strategic ground holding of 2,000 sq km in the emerging Ni-Cu-PGE Province near Julimar (Chalice Gold NL). Surrounded by Anglo American Corporation.
- **Blackridge, QLD:** 150 sq km covering majority >300,000 ounce gold field.

**Other
Strategic
Holdings**

Introducing Impact Minerals (ASX: IPT)

Capital Structure

Listed on ASX	November 2006
Shares on Issue	1,778 million
Options	153M unlisted Executive
Share Price	2.3 c
Market Cap	\$40 million
Cash	A\$3.5 million

**18
month
Share
price**



Shareholders

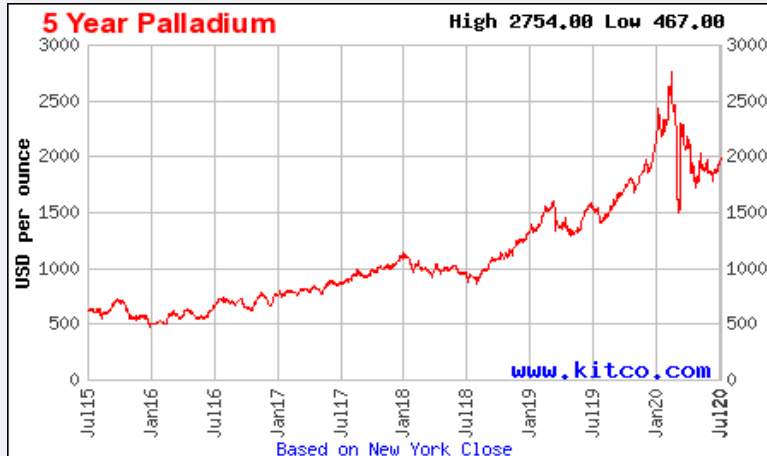
Bunnenberg Family	11%
ABC Beteiligungen	11%
Directors	3%
Top 20	43%
Top 50	52%
No of Shareholders	3,500

Major exploration and commodity boom in progress driven by gold, PGM's and government larceny

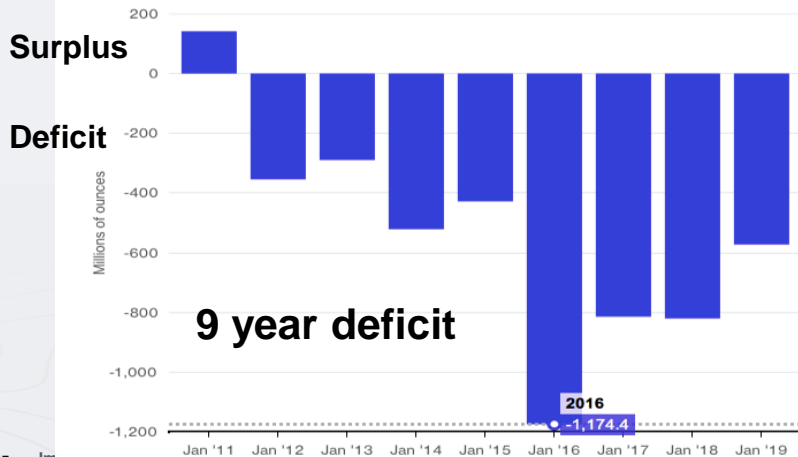
Broken Hill Project, PGM-Nickel-Copper, New South Wales



Record Palladium (and Rhodium) Prices: 9 years of deficit



- 85% used in exhaust systems.
- Increased demand in hybrid vehicles and hydrogen fuel cells.
- Pd supply not increasing to meet demand as it is mostly a by product of platinum mining which has struggled.
- Mined mostly in South Africa and Russia



Source: Metals Focus



Broken Hill Project Overview

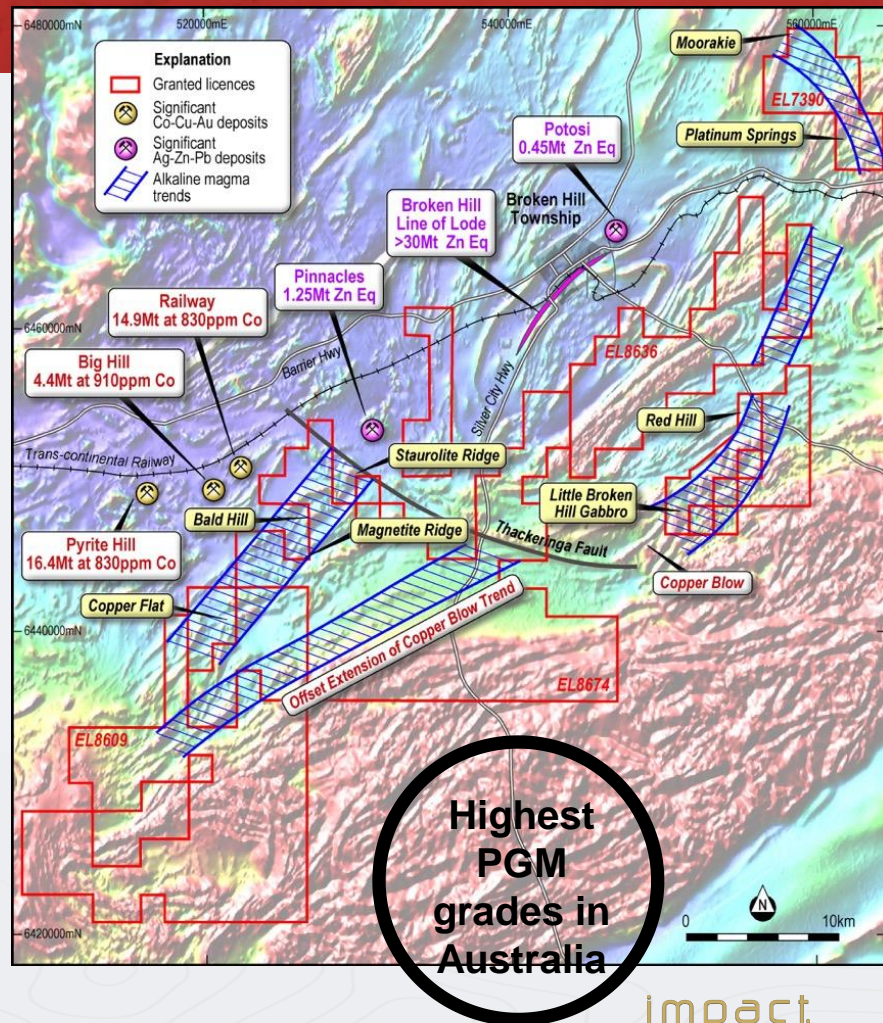
1. Major land position of 815 sq km in one of Australia's most prolific mining belts
2. Highest drill hole PGM grades in Australia including rare PGM's Rh, Os, Ru and Ir.
3. Multiple targets for nickel-copper-PGM deposits

Platinum Springs: high grade magmatic nickel-copper-PGE sulphide.

Moorkai: High grade rock chip samples over 9 km trend

Red Hill: Impact discovery of very high grade PGE's. **Rockwell-Little Broken Hill Trend:** poorly explored intrusion similar to Jinchuan and Voiseys Bay.

4. Potential for million ounce PGM discovery
5. Significant zinc-lead-silver potential

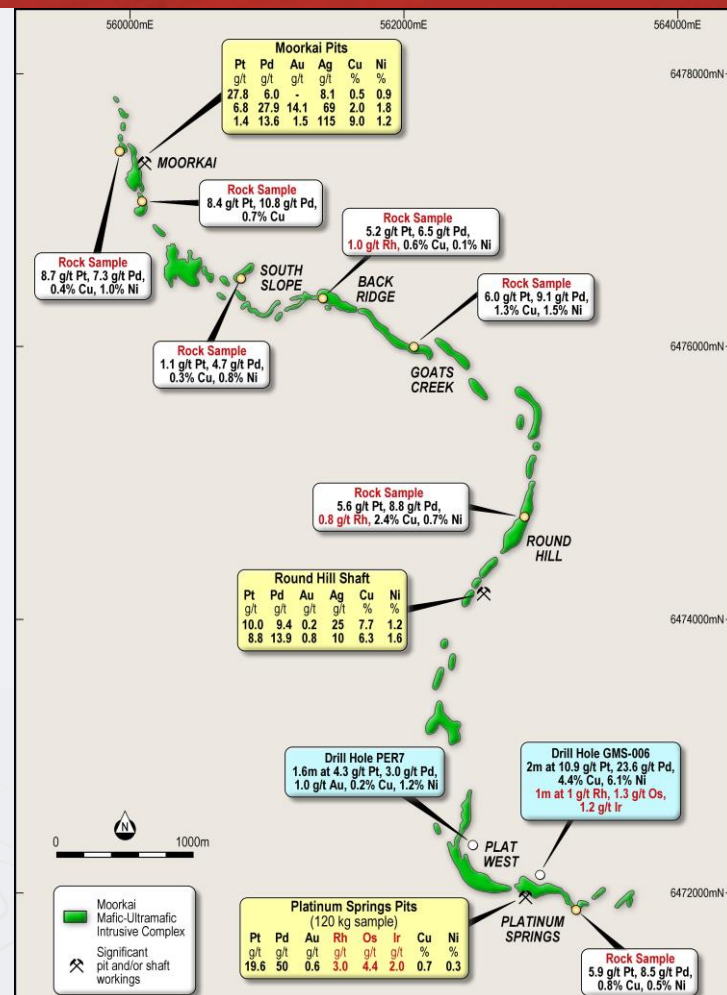


Moorkai-Platinum Springs: Magmatic Ni-Cu-PGM sulphides

Platinum Springs



- 0.6 metres at 11.5 g/t platinum, 25.6 g/t palladium, 1.4 g/t gold, 7.6% copper, 7.4% nickel and 44.3 g/t silver from 57.1 metres down hole within
- 2.75 metres at 3.5 g/t platinum, 7 g/t palladium, 0.4 g/t gold, 2% copper, 1.9% nickel and 11.6 g/t silver¹
- Southern end of the 9 km Moorkai Trend dripping in PGE's.
- **BUT: How to Focus?**



Exploration for PGE's is **DIFFICULT**

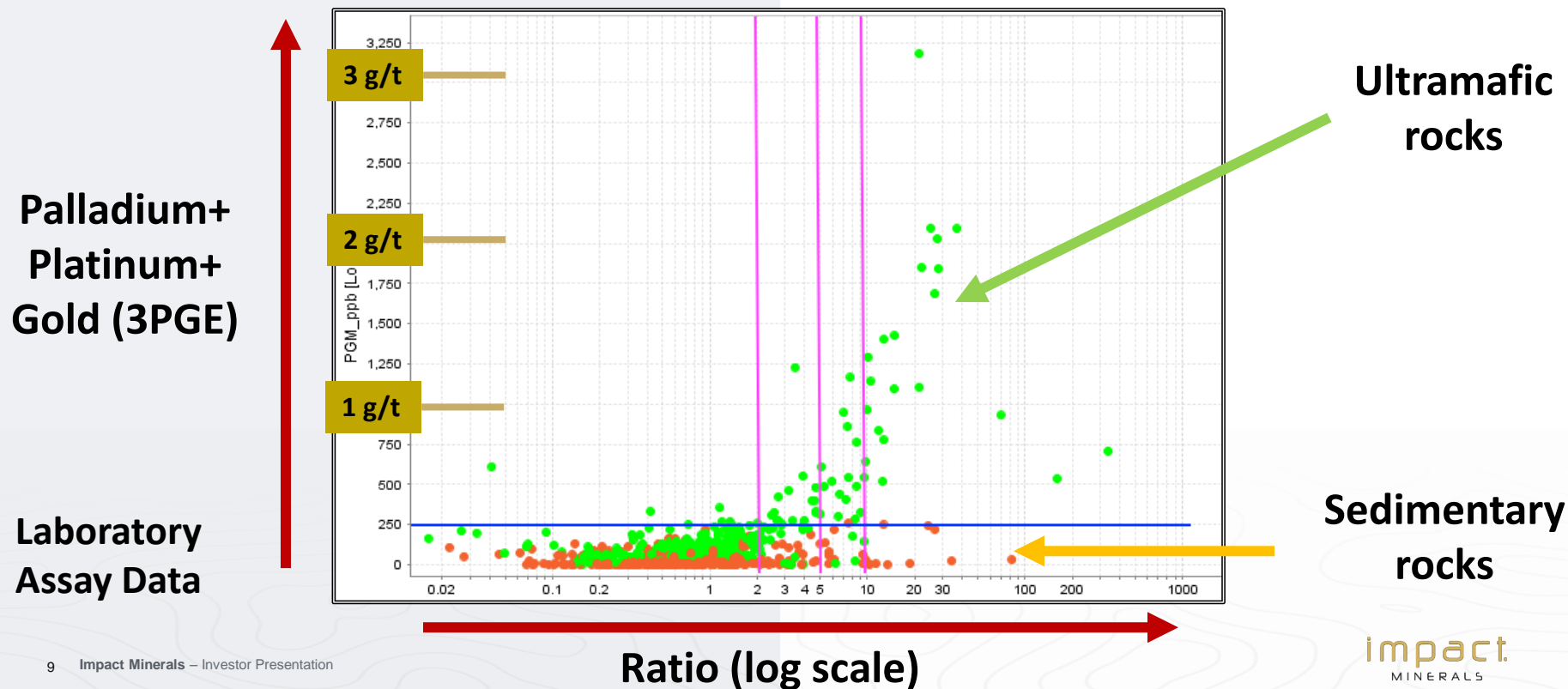
- They are impossible to see: so-called **“No see ‘um”** zones.
- Not detectable by hand held XRF because of high detection limits.
- Conventionally require laboratory assay leading to excessive delays in progressing the exploration programs.

18 g/t “No see ‘um” Zone Lac des Iles

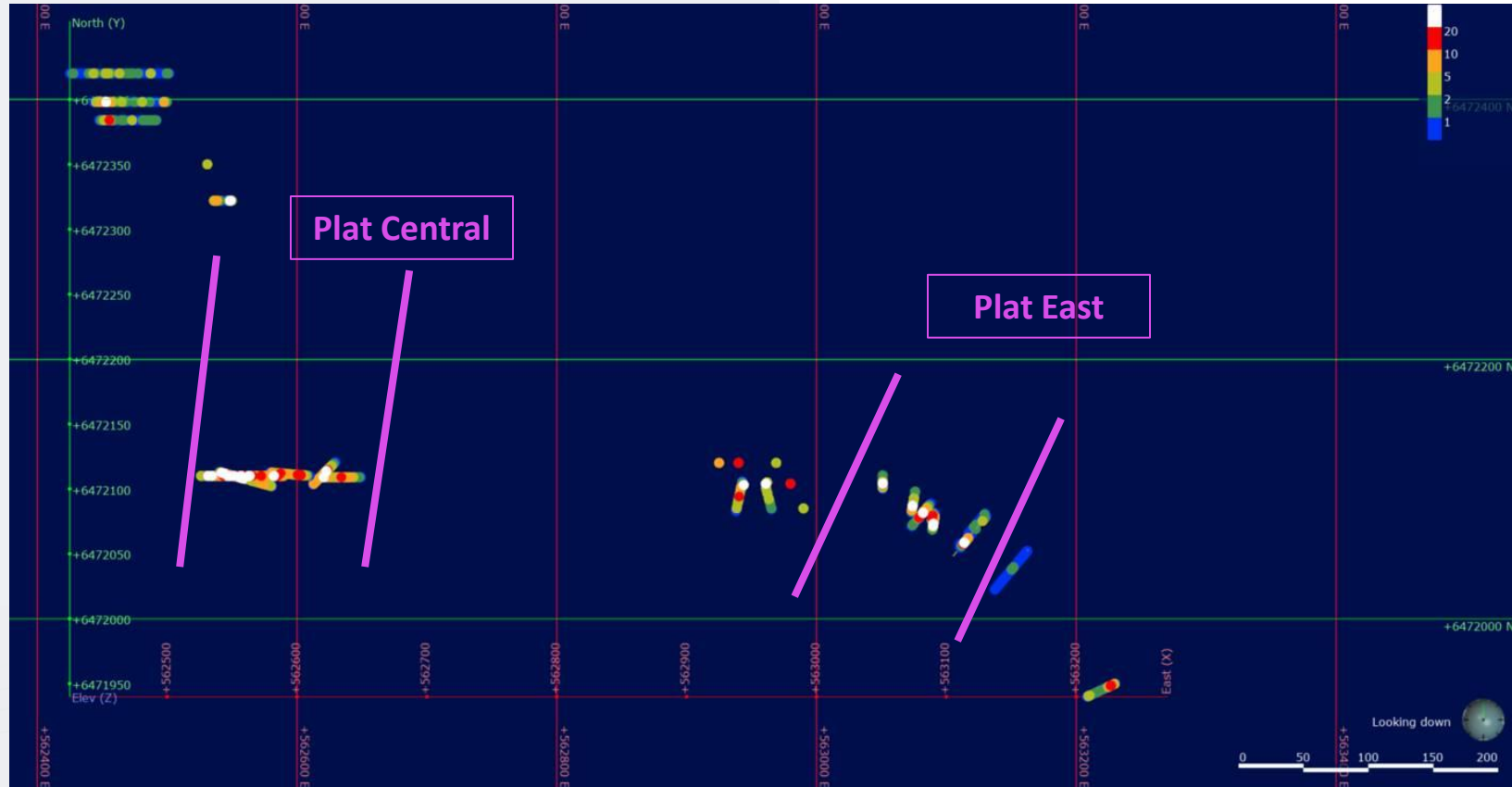


Ratios R Us – A vector to high grade PGMs?^{2, 3}

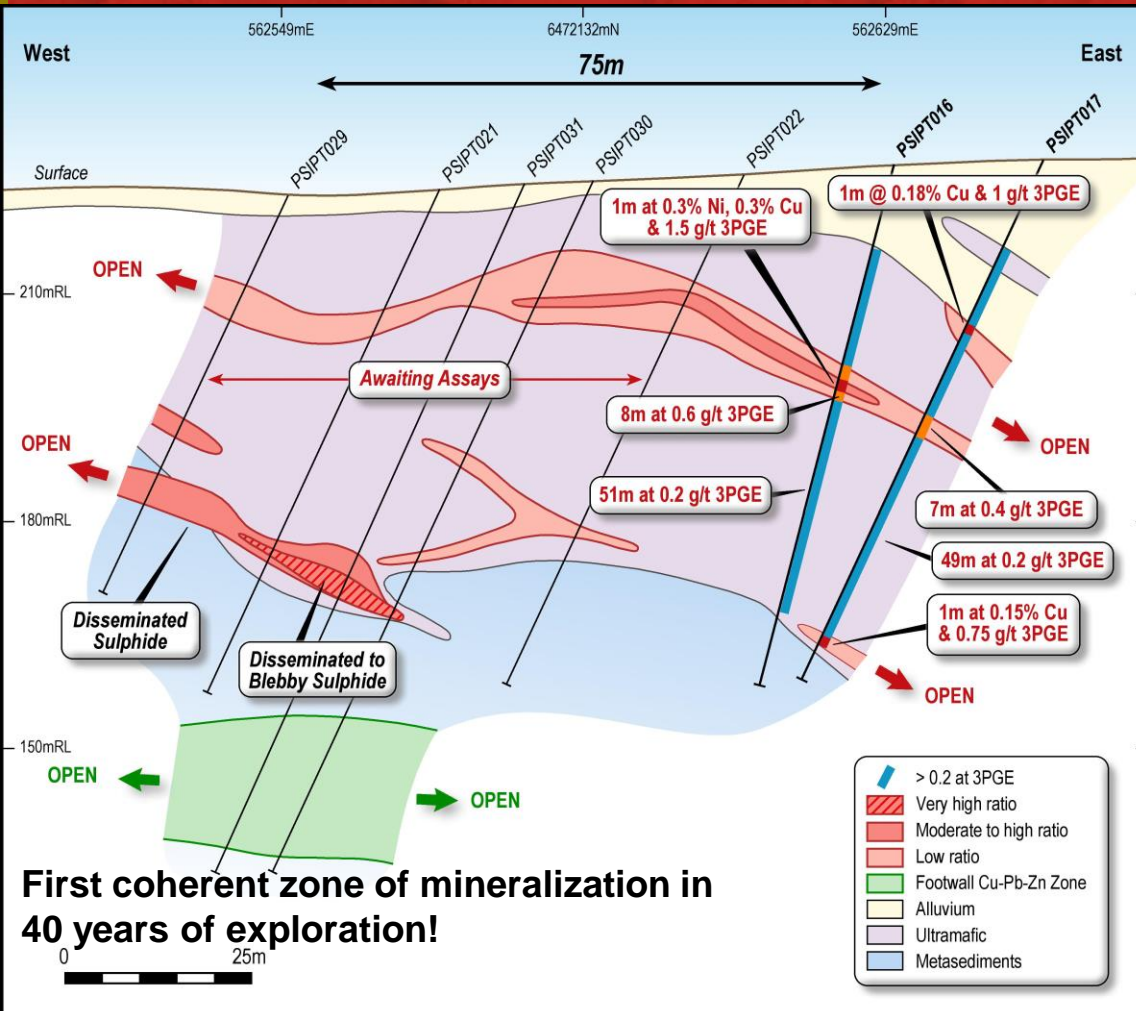
Impact breakthrough geochemical ratio that predicts PGE grade and which can be read with a hand held XRF instrument as drilling progresses.



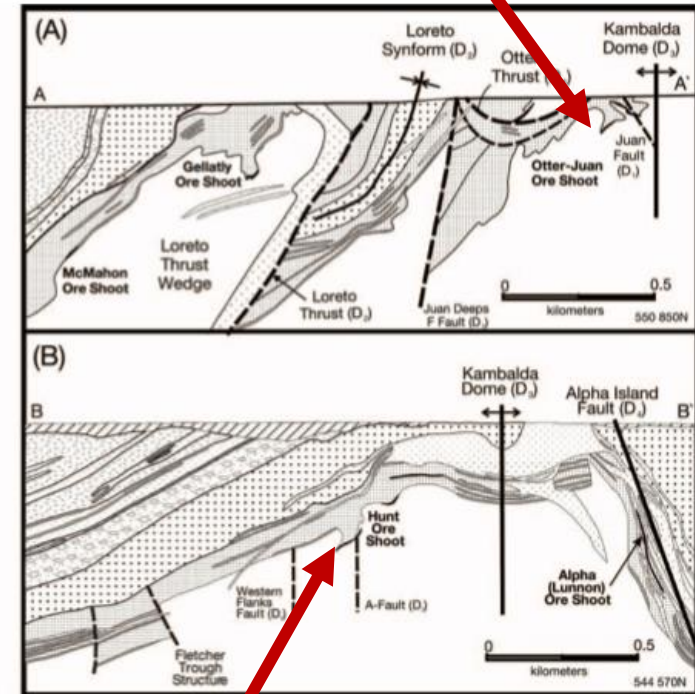
Ratio has allowed drill rig to be directed during the programme ^{2, 3}



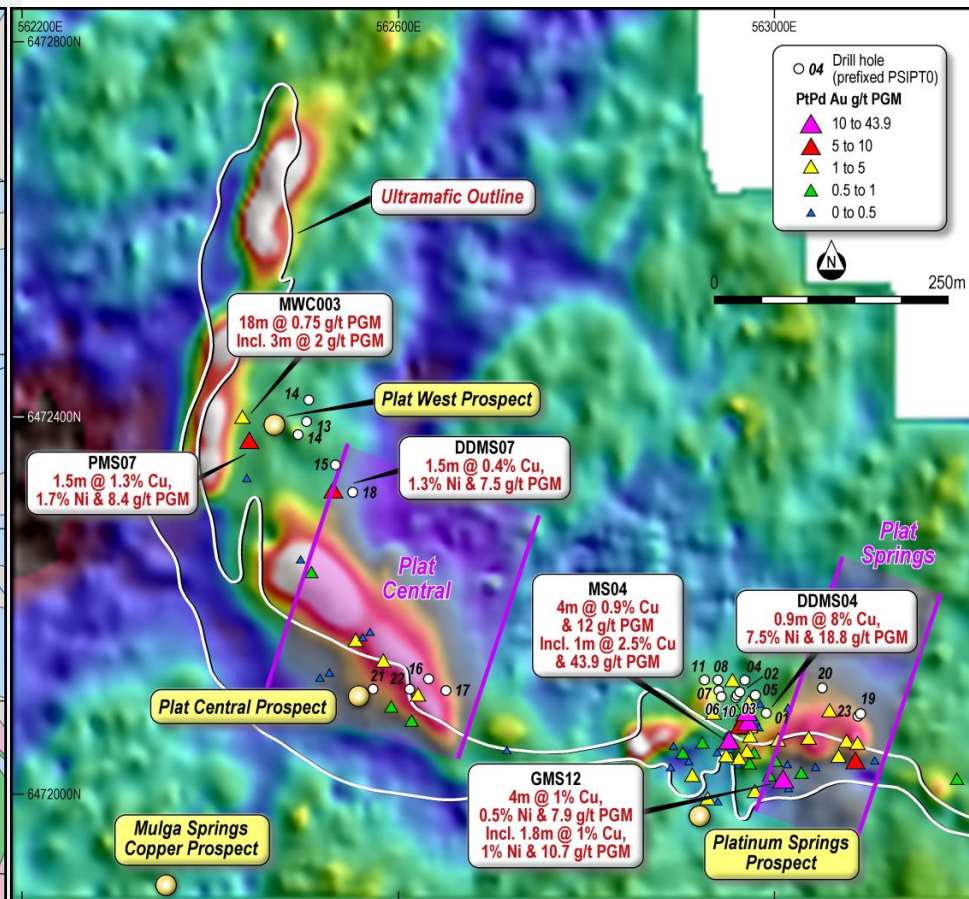
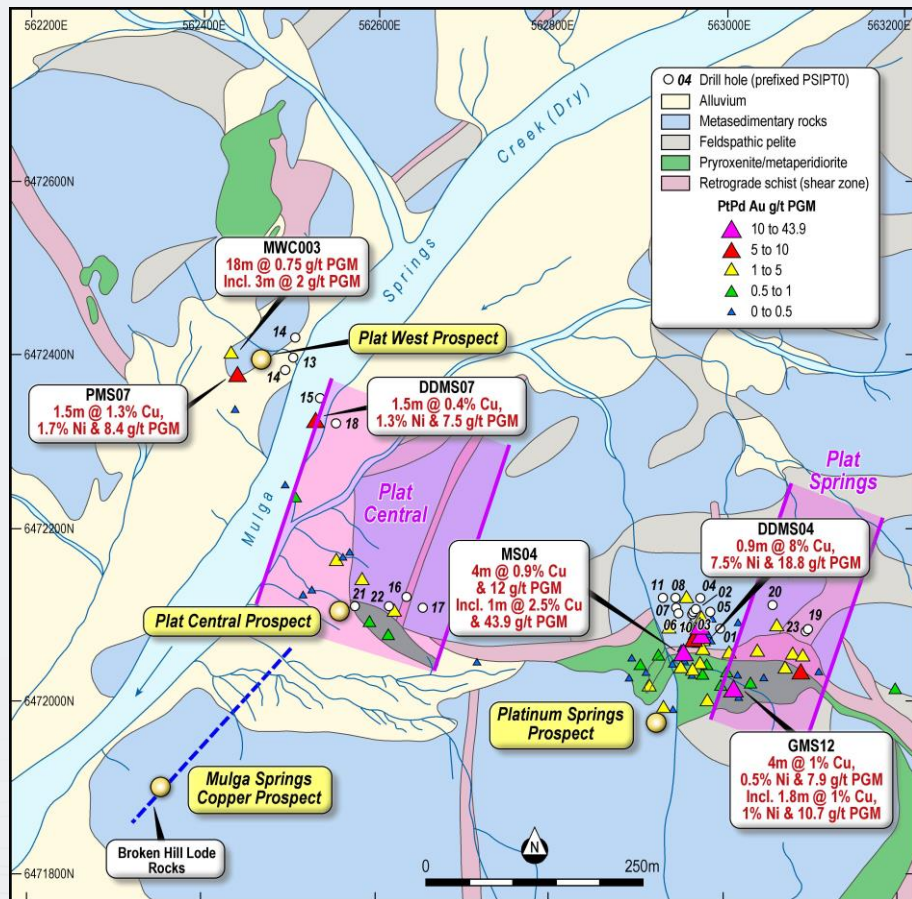
Ratio discovers a Cu-Ni-PGE Kambalda-style Channel at Plat Central ³



Kambalda Channels

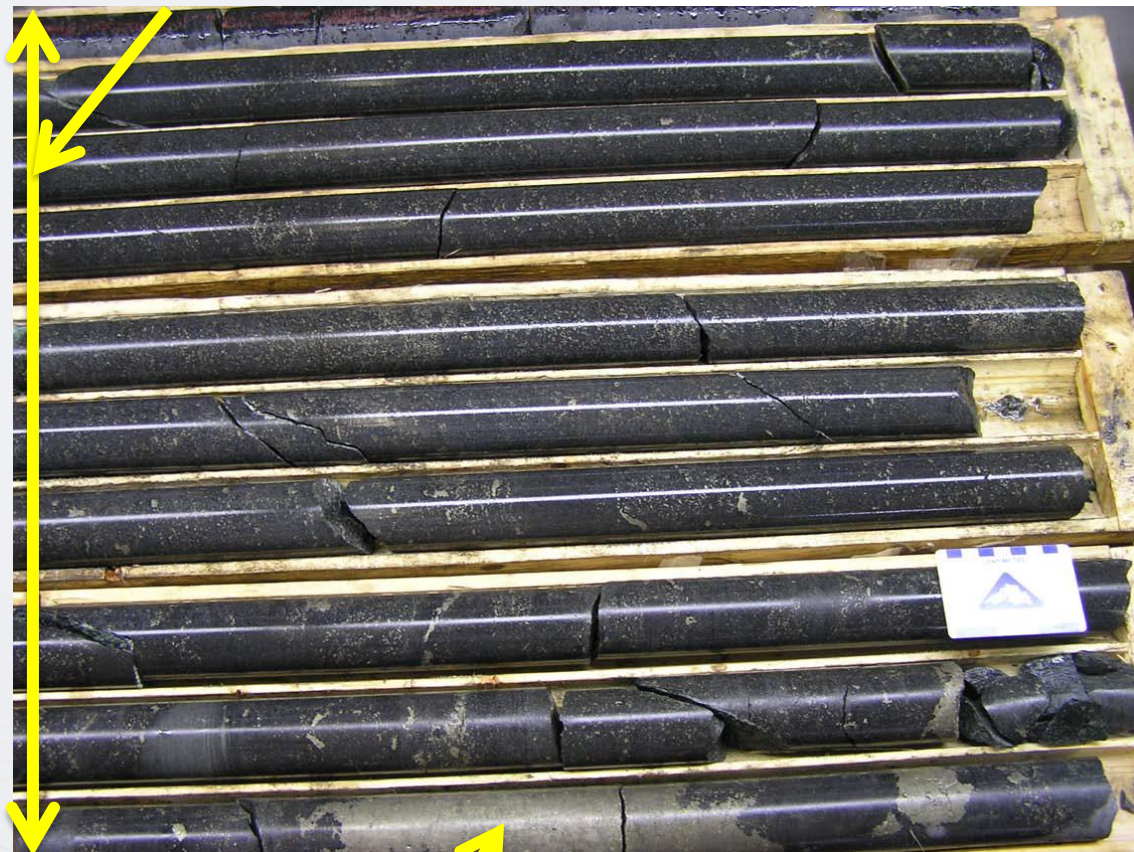


Platinum Springs: Two high grade corridors and drilling in progress 2, 3



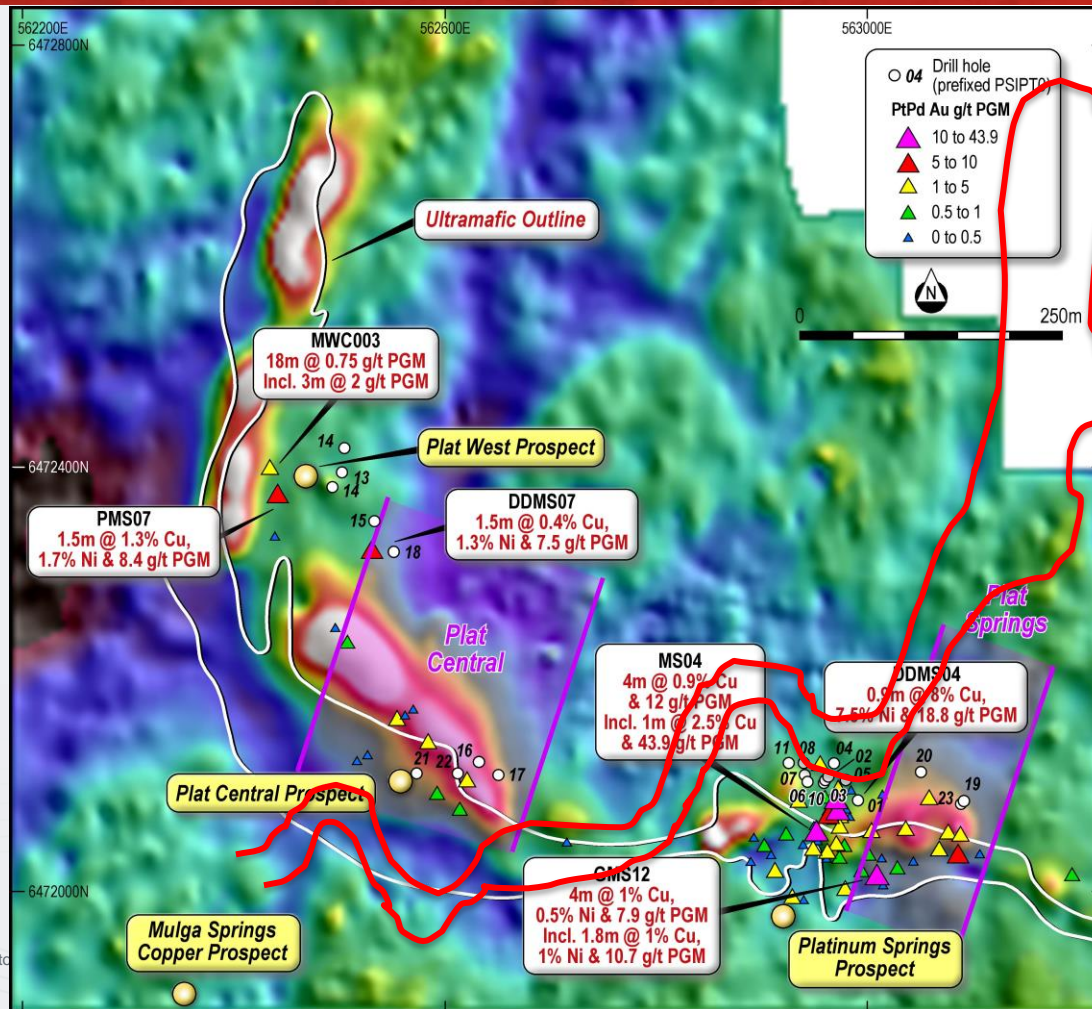
Thunder Bay: Sulphide Mineralisation

8.75m @ 6.98g/t Pt+Pd, 1.00% Cu & 0.62% Ni



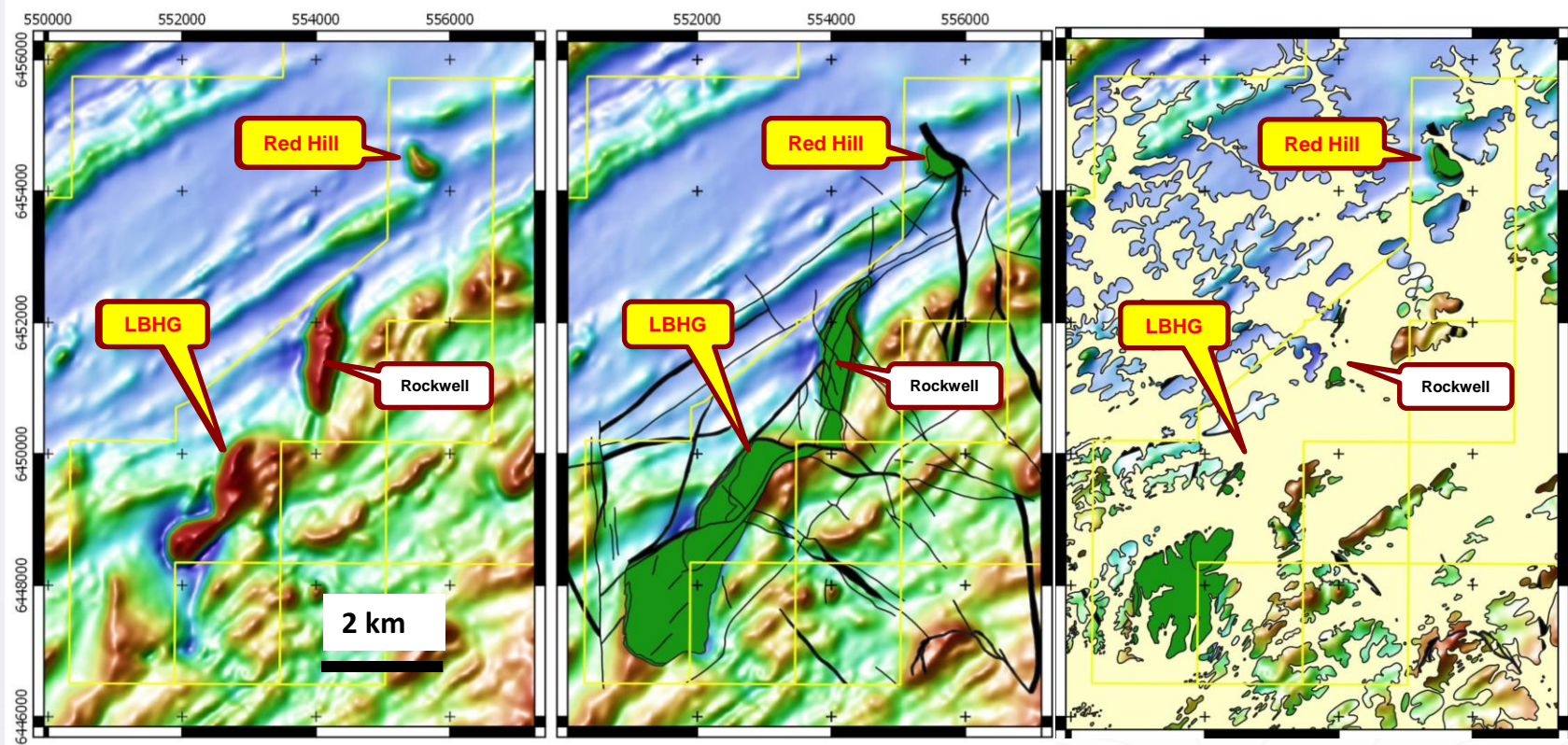
0.4m @ 24.55g/t Pt+Pd, 3.7% Cu & 2.9% Ni

Comparison to Thunder Bay Resource outline



**Thunder Bay
Resource Outline!**

Little Broken Hill: 6 km long intrusion with 1 drill hole >25m⁹

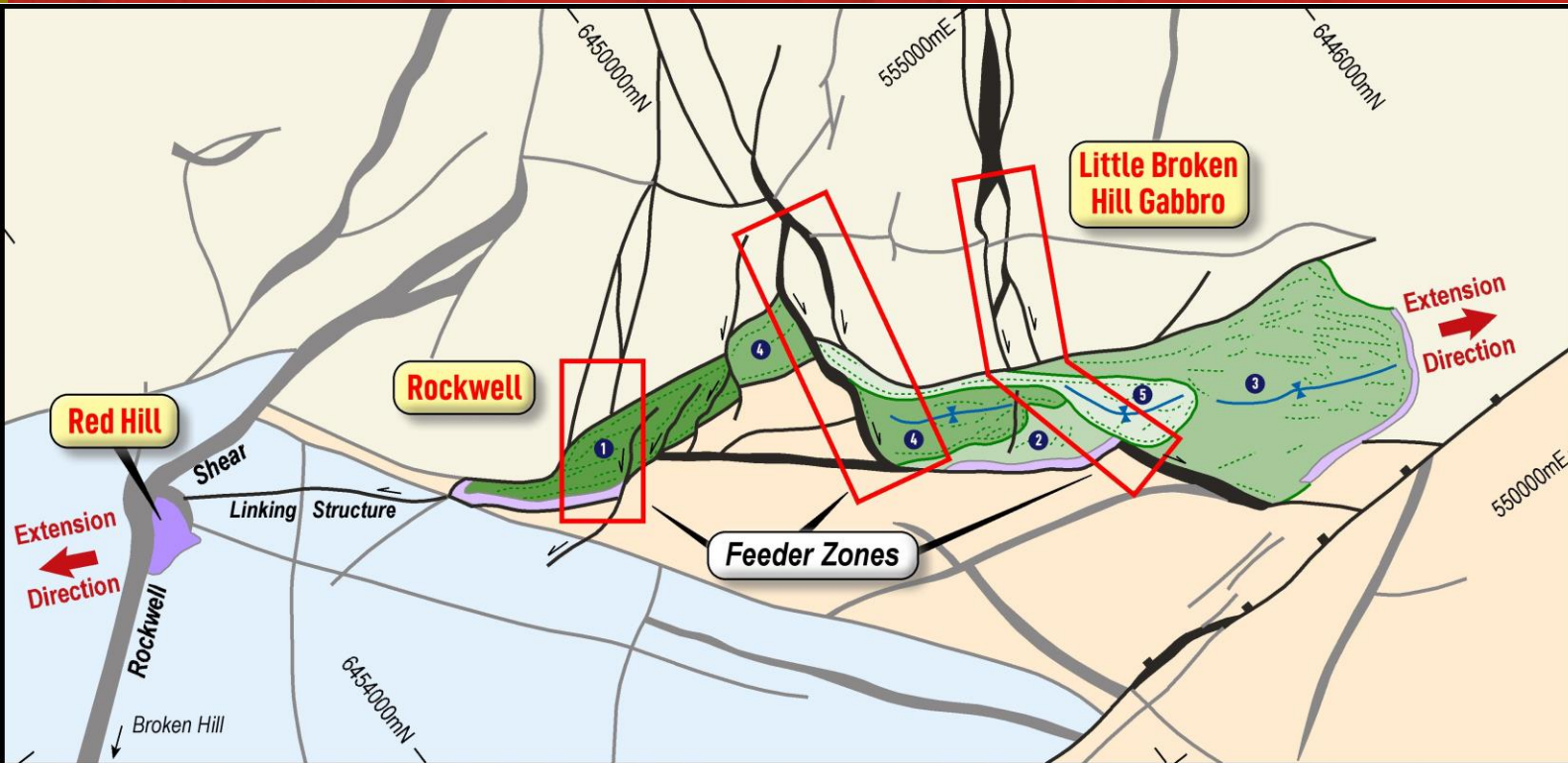


Magnetic Data

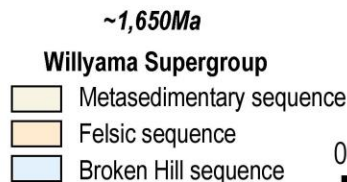
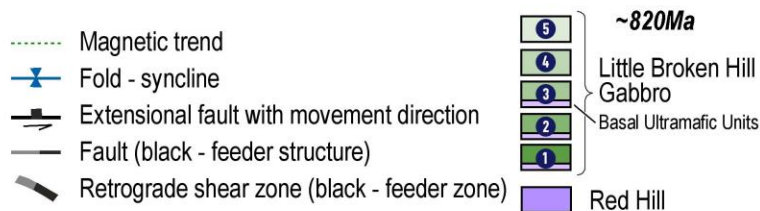
Extent of Gabbro

Extent of Cover

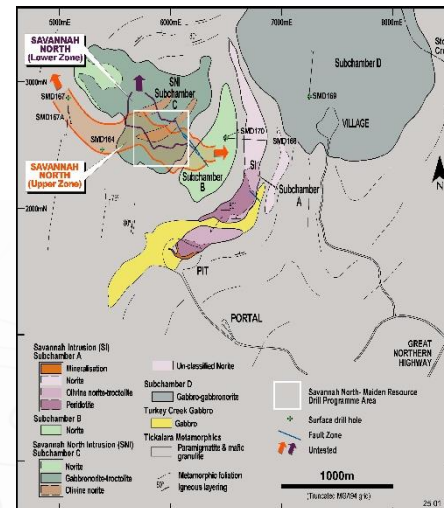
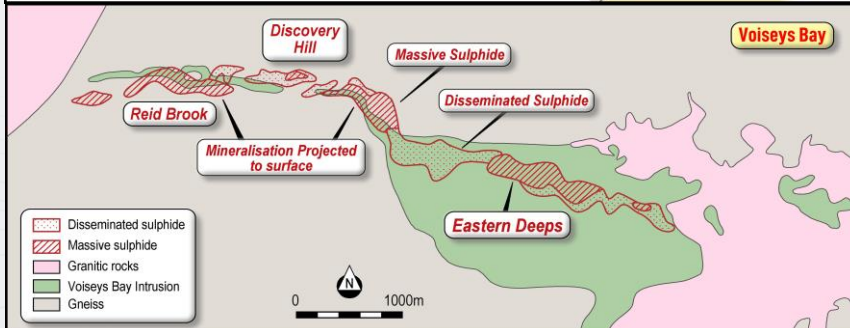
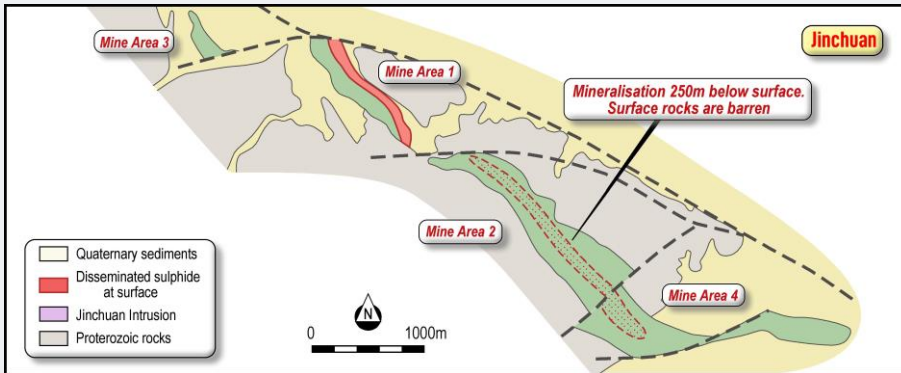
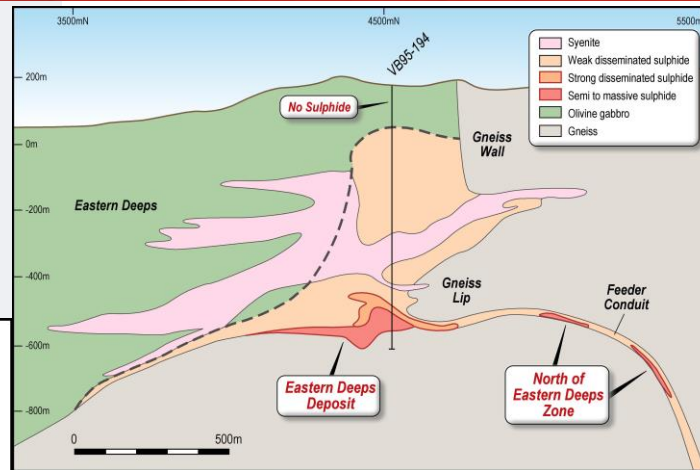
The gravity of the situation at Little Broken Hill: Priority Feeder Zone Targets identified: Ratio appears to work! ⁹



Feeder zones under cover



Little Broken Hill: Similar size to Jinchuan and Voiseys Bay



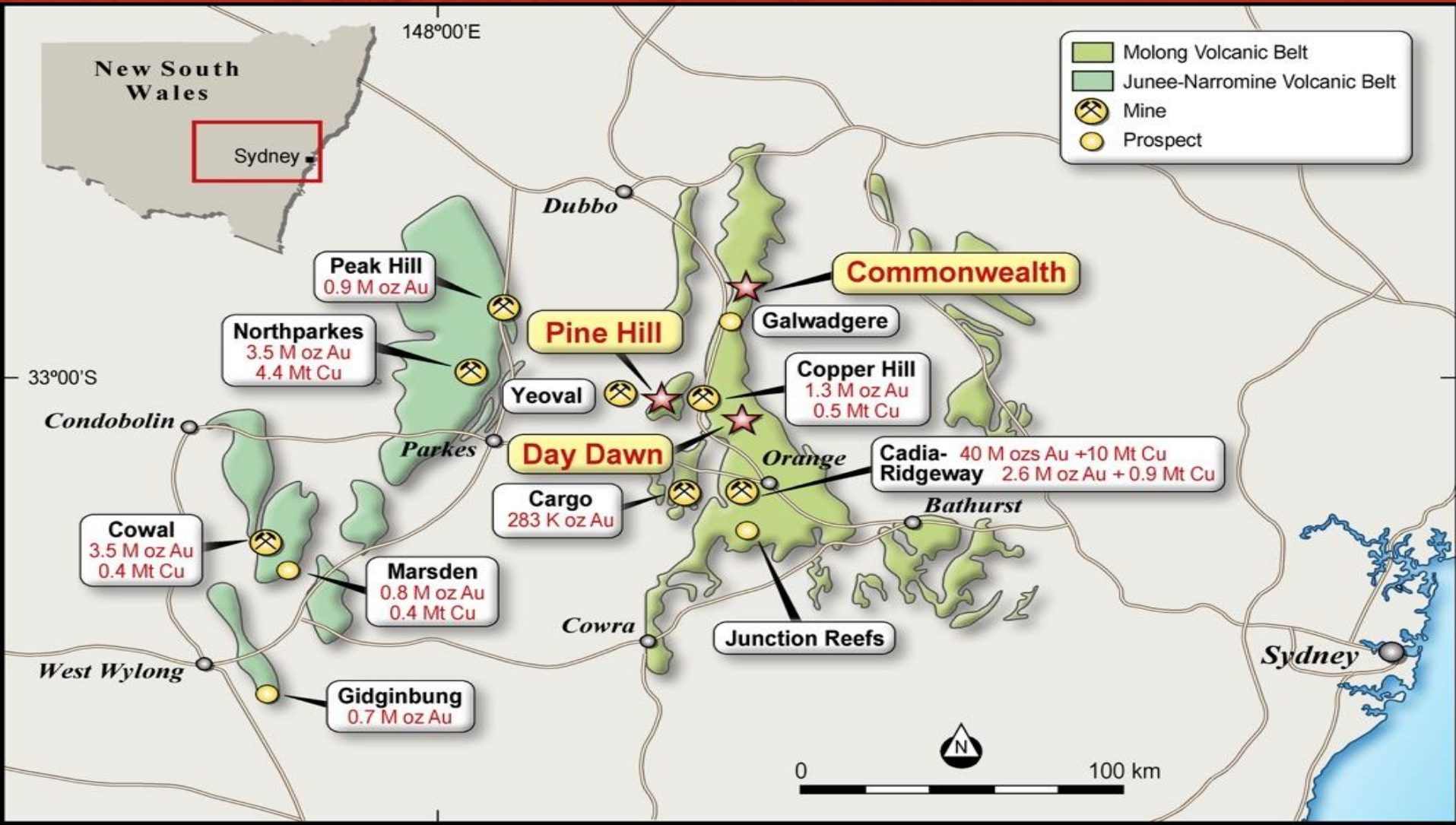
A new geodynamic setting for Broken Hill at c.800Ma ⁵

- Nickel-copper-PGE bearing intrusions related to the break up of the supercontinent Rodinia about 800 million years ago.
- Break up is related to a mantle plume head (red circle) responsible for the breakup of Rodinia which formed the Jinchuan and Lengshuiqing Ni-Cu-Co-PGM deposits.
- Broken Hill was located in the same region at the time and so has the geological setting to host major Ni-Cu-PGM deposits.

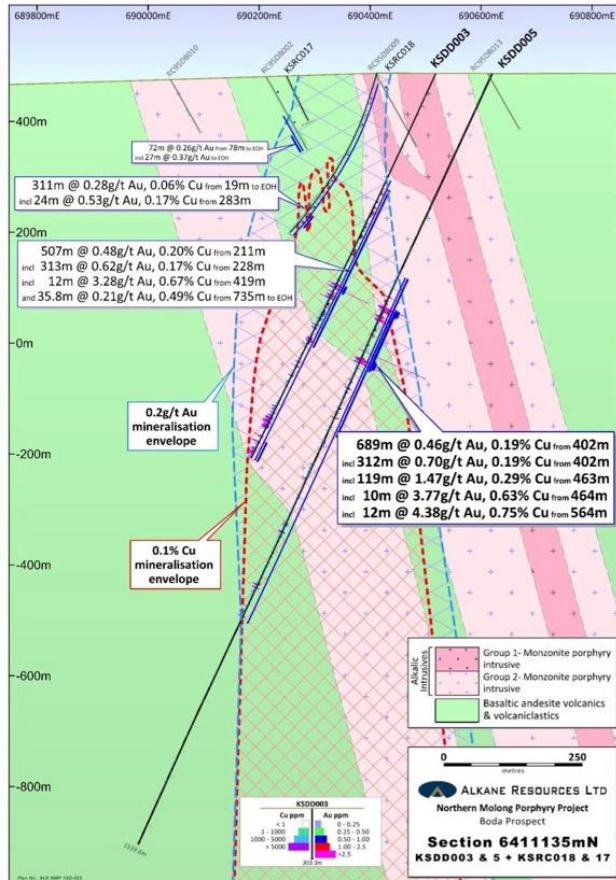
**Right Place
at the right
time**



Commonwealth Project, Lachlan Fold Belt, NSW

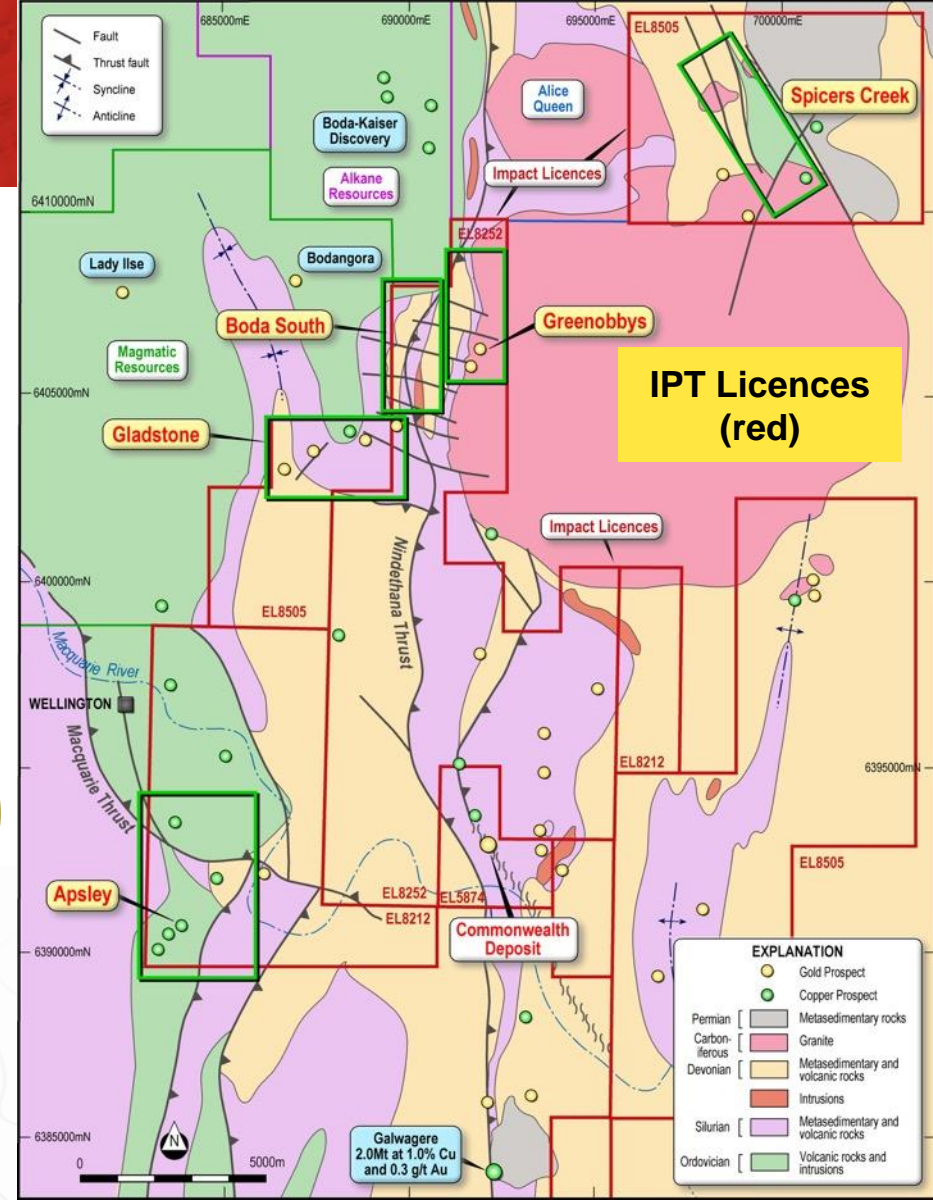


Boda Porphyry Cu-Au Discovery: No porphyry. Yet.

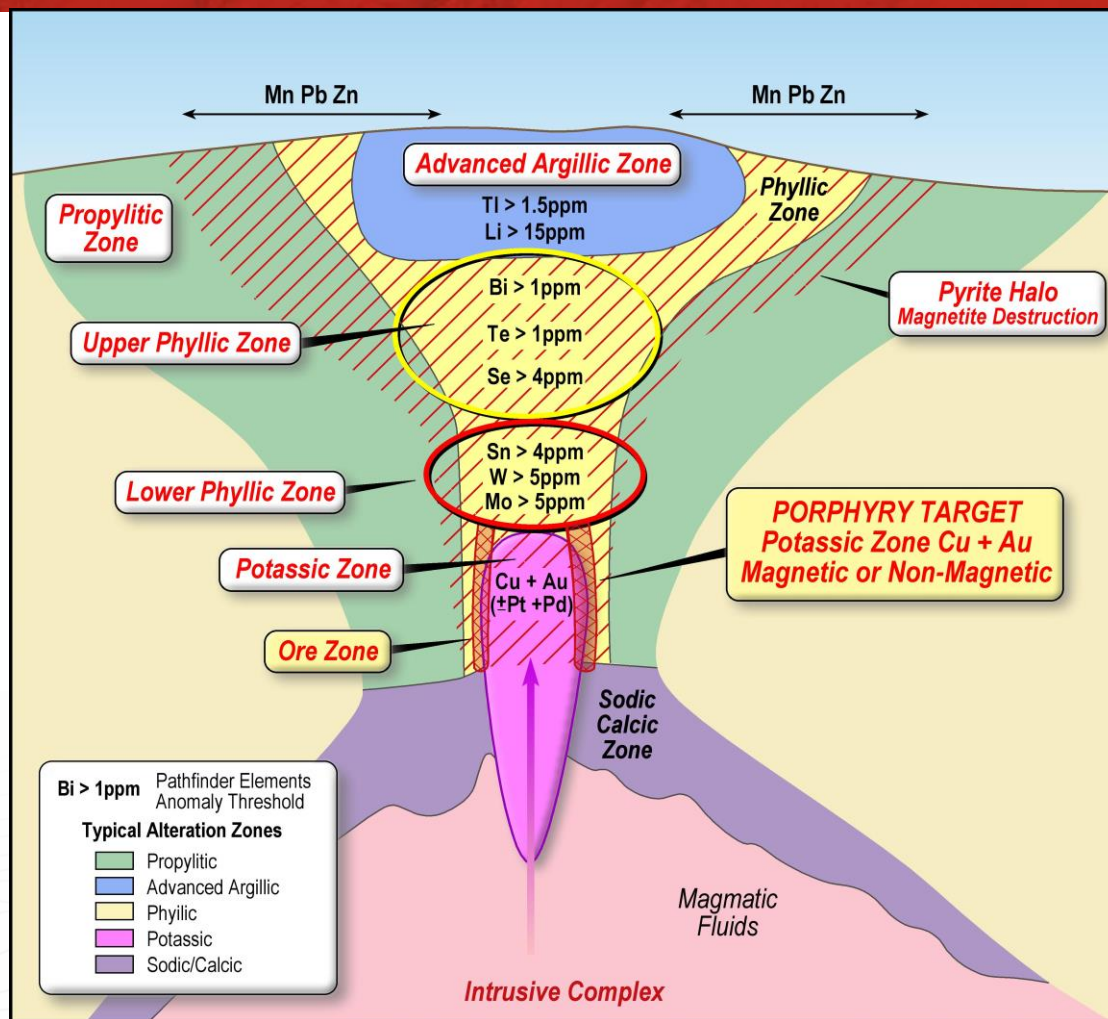


50 years to discovery at Boda!

Five priority prospects

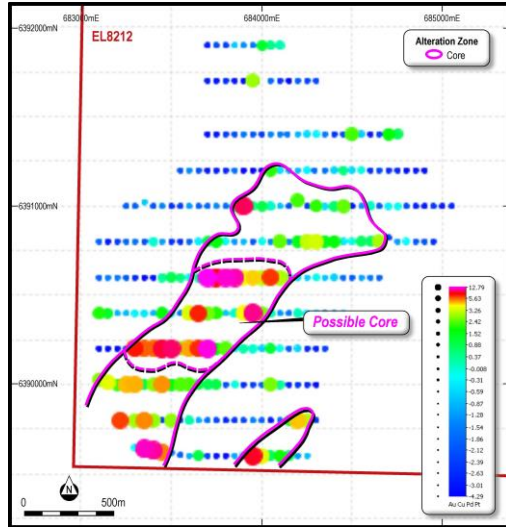


Text Book Cross Section Through a Porphyry Copper-Gold Deposit ⁶

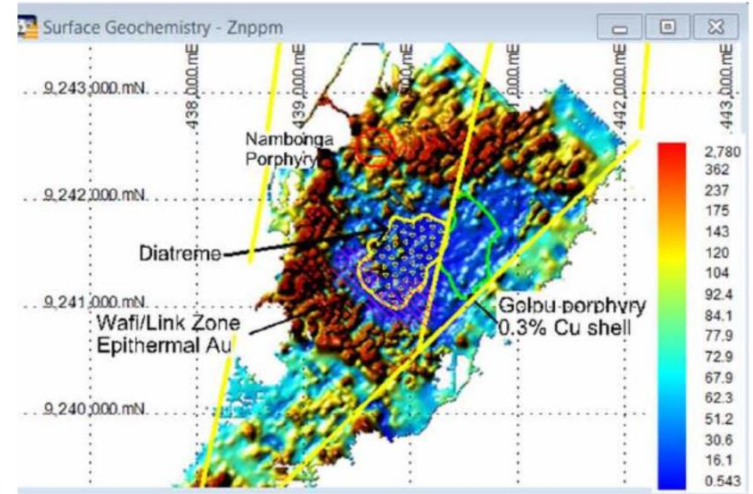
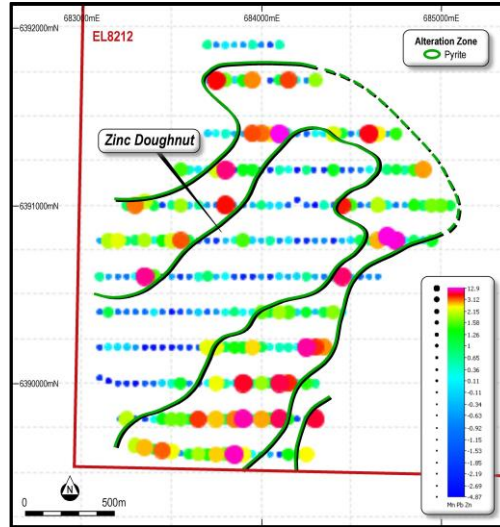


Zinc doughnuts at Apsley ⁶

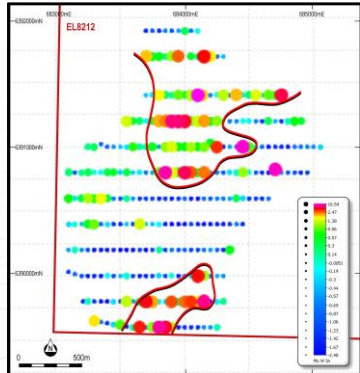
Au-Cu-Pd-Pt Core



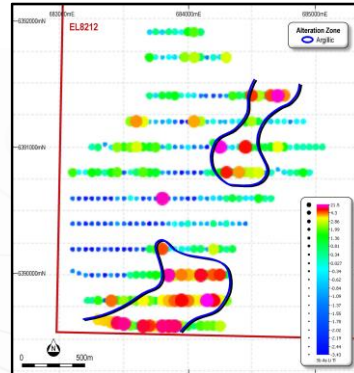
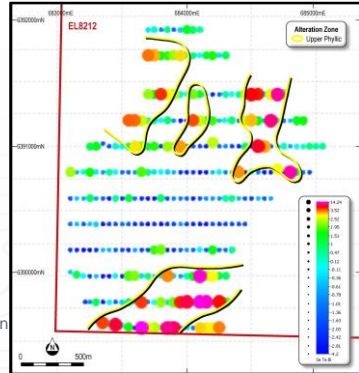
Zn-Pb-Mn Outer Halo/Pyrite Zone



Mo-W-Sn L. Phyllic Zone

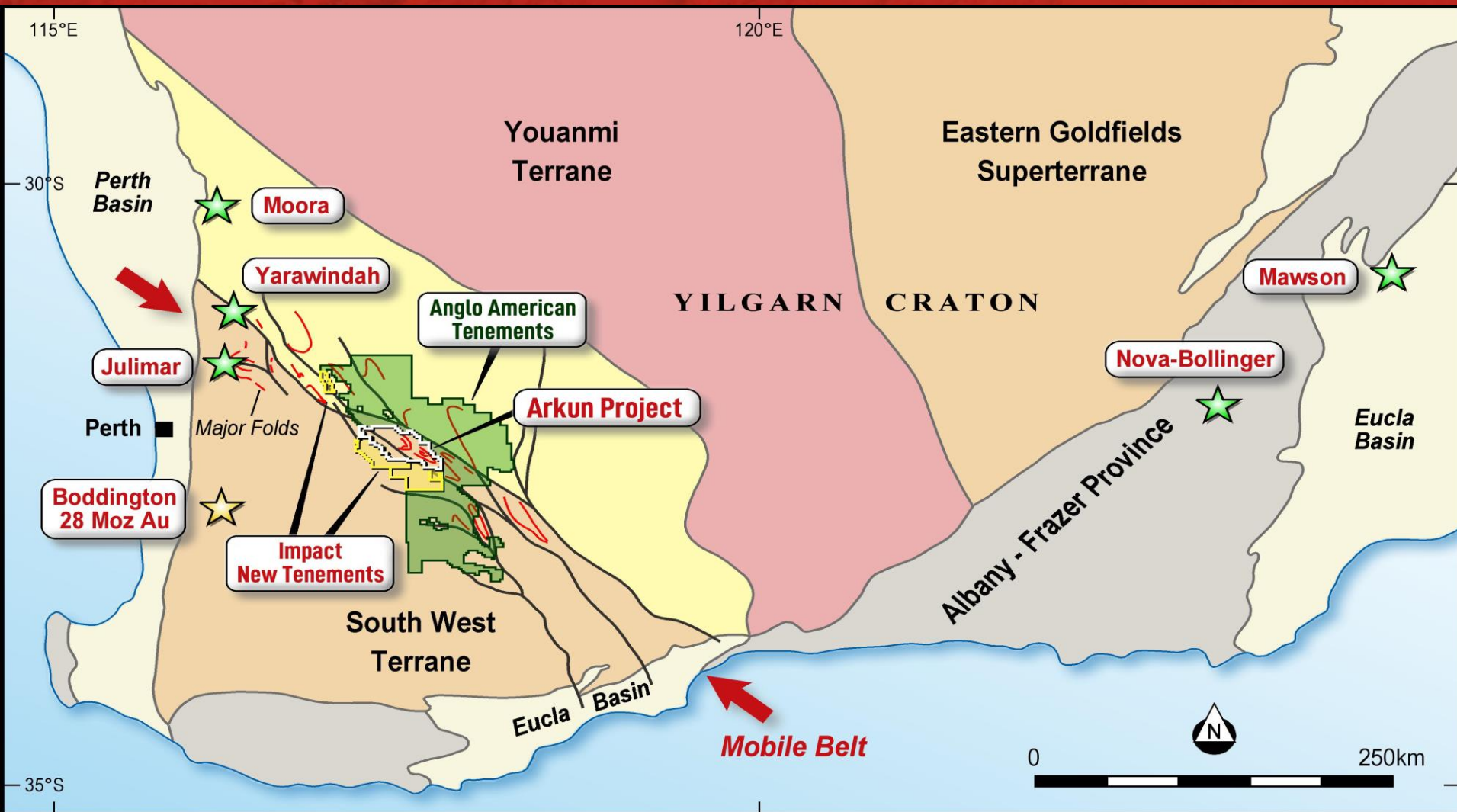


Se-Bi-Te U. Phyllic Zone Sb-As-Li-Tl Advanced Argillic Zone

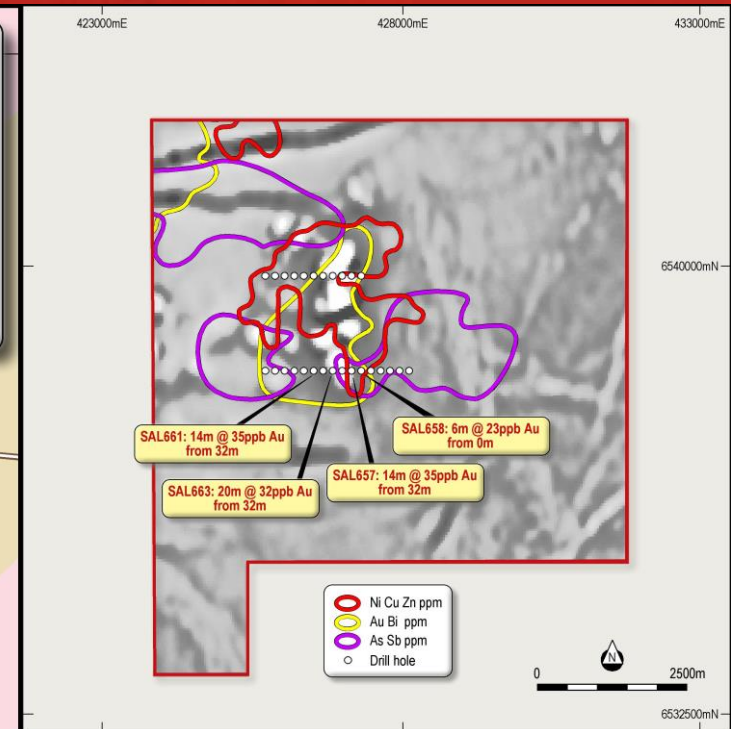
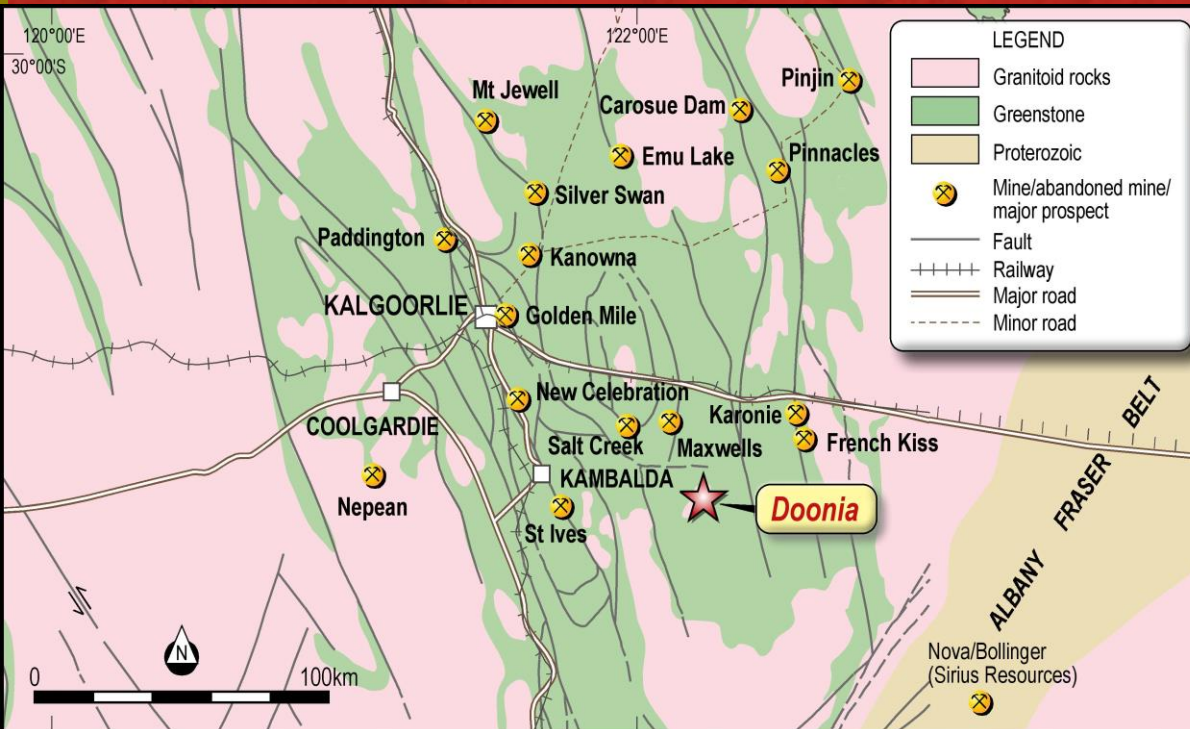


Text Book Patterns

Arkun Project, SW Yilgarn Craton, WA 7,8



Doonia Project, Eastern Goldfields, WA 9



Walk up
drill Target
for 2021

2021 Vision: Next Steps

1. Broken Hill, New South Wales (IPT 100%)

- Drilling in progress: Platinum Springs, Red Hill and Little Broken Hill Gabbro.
- Programme of 12,000 metres aircore and RC.
- Strong news flow into 2021.

Drilling in
progress

2. Commonwealth, NSW (IPT: 100%)

- Major porphyry copper-gold target identified in soil geochemistry and IP surveys at Apsley.
- Drilling in Q1 2021.

Drilling Q1
2021

3. Other Projects (IPT 100%).

- Arkun and Doonia: target generation awaiting grant of licences in Q1.

Target
Generation

JORC Compliance

The information in this presentation relating to Exploration Results has been extracted from the following reports:

ASX Release Date. Title of ASX Release

1. 23 February 2016 Very high grade PGM nickel-copper in massive sulphide at Platinum Springs
2. 26 October 2020 Vectoring in at Platinum Springs, Broken Hill, NSW
3. 6 October 2020 Encouraging Signs at Platinum Springs
4. 9 July 2020 The gravity of the situation at Little Broken Hill NSW
5. 7 March 2019 New geodynamic framework for Ni-Cu-PGE and Co-Cu-Au-REE at Broken Hill
6. 10 August 2020 Throwing the porphyry copper-gold text book at Apsley
7. 29 May 2020 New Ni-Cu-PGE Project Application: Arkun WA
8. 10 June 2020 Expansion of the Arkun Ni-Cu-PGE Project east of Perth
9. 17 November 2020 New gold project in the Eastern Goldfields: Doonia, WA

Disclaimer

What You Should Know

Find out more – This presentation is being used as a presenter's aid with summarised information. See Impact's other periodic and continuous disclosure announcements lodged with the Australian Securities Exchange, which are available at www.asx.com.au or www.impactminerals.com.au, for more information.

Third party information – Impact does not make any representations as to the accuracy or otherwise of third party information, including where projections are given.

Forward-looking statements – Within this presentation there may be certain forward-looking statements, opinions and estimates. These are based on assumptions and contingencies which are subject to change without notice and are not guarantees of future performance. Impact assumes no obligation to update such information.

Taking action – Please undertake your own evaluation of the information in this presentation and contact your professional advisers if you wish to buy or sell Impact shares.

Competent Person Statement and JORC Compliance

Exploration Results: *The review of exploration activities and results contained in this report is based on information compiled by Dr Mike Jones, a Member of the Australian Institute of Geoscientists. He is a director of the company and works for Impact Minerals Limited. He has sufficient experience which is relevant to the style of mineralisation and types of deposits under consideration and to the activity which he is undertaking to qualify as a Competent Person as defined in the 2012 edition of the Australasian Code for Reporting of Exploration Results, Mineral Resources and Ore Reserves (the JORC Code). Mike Jones has consented to the inclusion in the report of the matters based on his information in the form and context in which it appears.*

The ASX Releases referenced below on on the Impact Minerals website at www.impactminerals.com.au. The Company confirms that it is not aware of any new information or data that materially affects the information included in the most recent market announcement for each project, and in the case of Mineral Resources and Ore Reserves, that all material assumptions and technical parameters underpinning the estimates in the relevant market announcement continue to apply and have not materially changed. The Company confirms that the form and context un which the Competent Person's findings are presented have not materially changed from the original market announcement.