



Investor Presentation

Making an “Impact” In New South Wales



Managing Director: Dr Mike Jones
Chief Operations Officer: Leo Horn
June 2014

Introducing Impact Minerals (ASX:IPT)

Listed on ASX	November 2006
Shares on Issue	487m
Options	8 m listed IPTO 34m unlisted
Share Price	3.5¢
Market Cap	\$18m
Key Projects	Commonwealth Au-Ag-Zn-Pb-Cu (NSW) Broken Hill JV: Ni-Cu-PGM (NSW) Mulga Tank JV: Ni-Cu-PGM (WA)



Shareholders

Bunnenberg Family	31%
Directors	11%
Top 20	58%
Top 50	69%

Still dominating in difficult times!

Two Major Drill Programmes: Q3 2014

1. COMMONWEALTH - NSW

- **Targeting a major high sulphidation porphyry system containing high grade gold silver and base metal deposits similar to the multi-million ounce mines at**
- 100% owned by Impact
- Historic mine grades of 6 g/t Au, 150 g/t Ag, 2% Cu, 15% Zn & 7% Pb
- Poorly explored, limited drilling to shallow depths
- Potential Company Maker Project
 - Recent recognition of major mineralised system covering many sq km
- 2,500 m drill programme for high grade Au-Ag-Zn-Pb-Cu
 - Testing multiple targets to confirm high sulphidation porphyry model
 - Multiple geophysical and geochemical targets
 - Resource definition drill out required to define an initial >100,000 oz gold eq.

Two Major Drill Programmes: Q3 2014

2. BROKEN HILL - NSW

- **Targeting PGE + nickel-copper sulphide**
- Earning 80% from GCR (\$250,000 remaining to earn equity)
- Highest grade PGM project in Australia: drill intercepts of >20 g/t platinum-palladium and 6% copper and 4% nickel at the Platinum Springs Prospect
- 1,500 m drill programme at the Red Hill Prospect
 - Historic mine grades up to 3% Cu, 3% Ni, 40 g/t Pt, 70 g/t Ag
 - Eagle deposit analogy identified: 5Mt @ 3.7%Ni and 3% Cu
 - Drill targets :
 - Historic mine workings; rock chips up to 16 g/t Pt, 12 g/t Pd, 4% Ni, 8% Cu
 - Significant PGE-Ni-Cu-in-soil anomalies
 - EM and IP geophysical targets
- Drilling to commence after Commonwealth drill programme

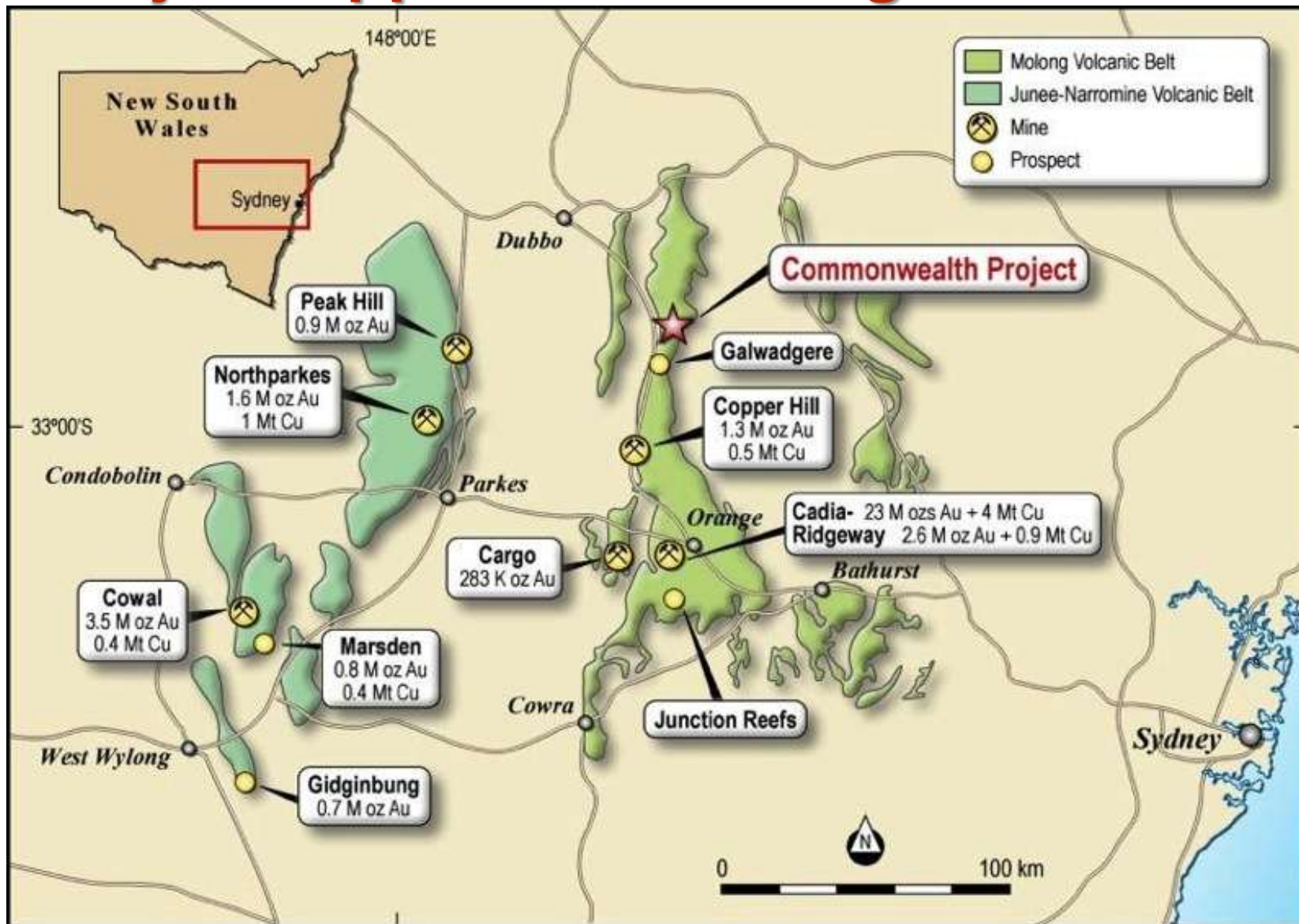
impact.

MINERALS

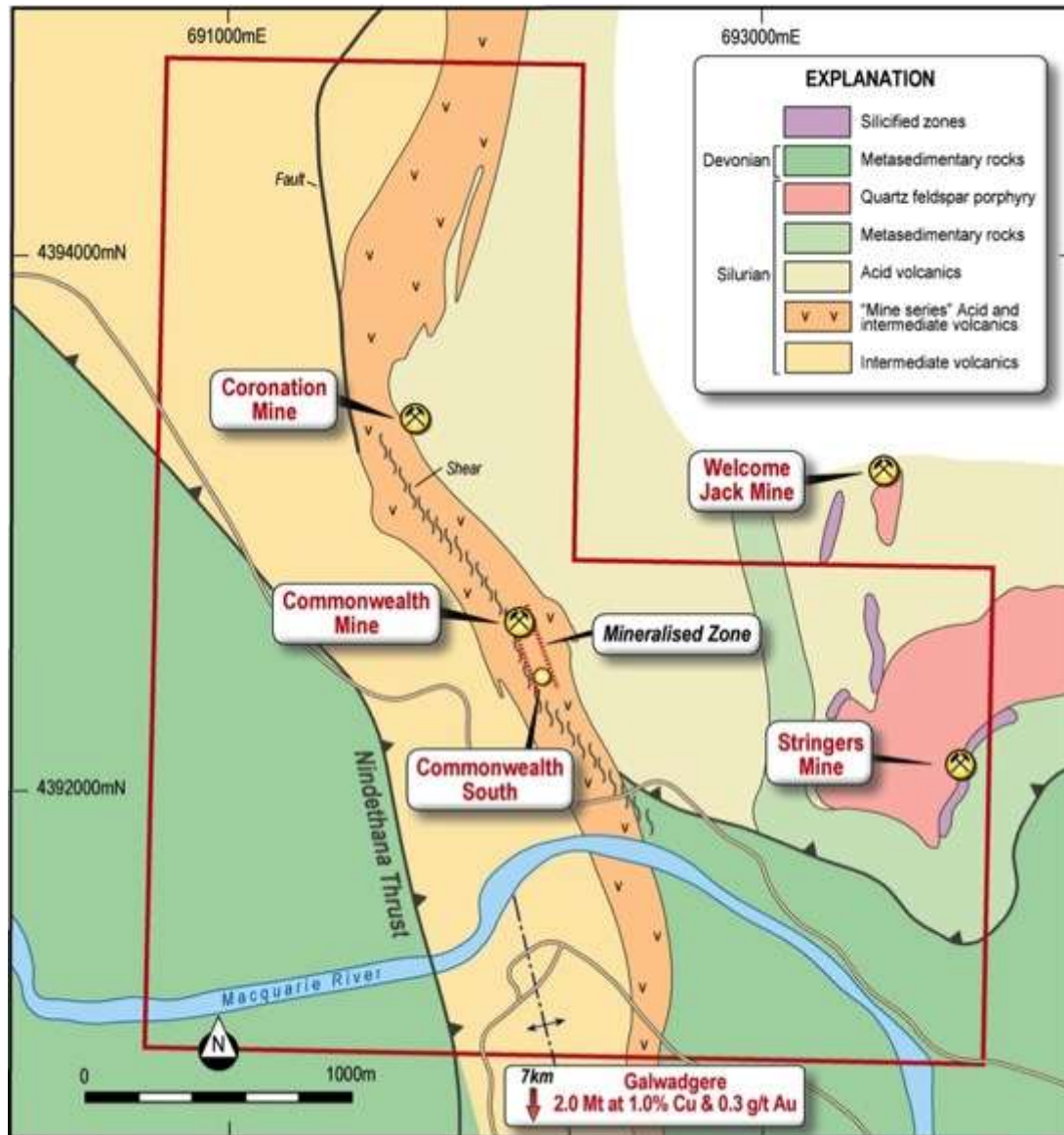
**Commonwealth
Gold-Silver-Base Metal Project
New South Wales
Impact 100%**



Major Copper-Gold Mining Province



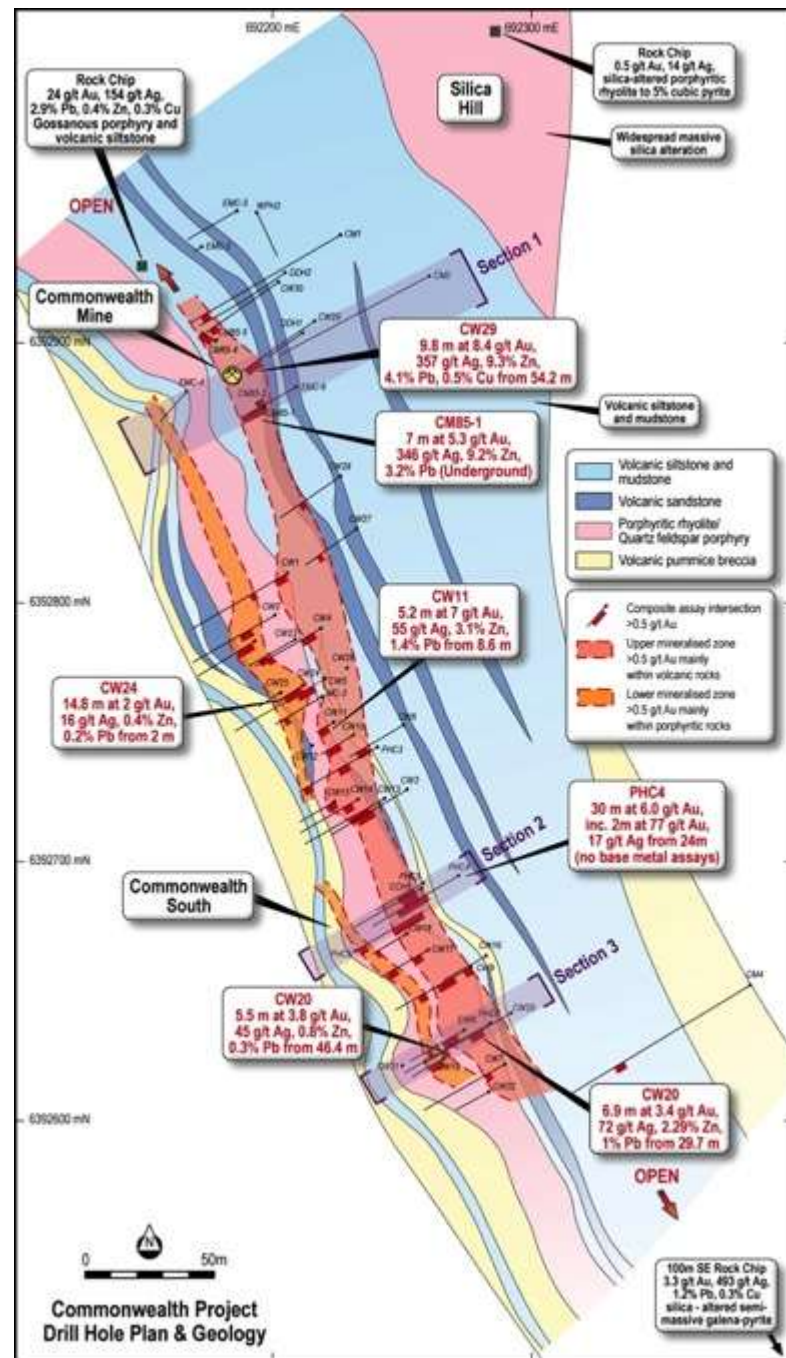
Commonwealth Project: Previous Work



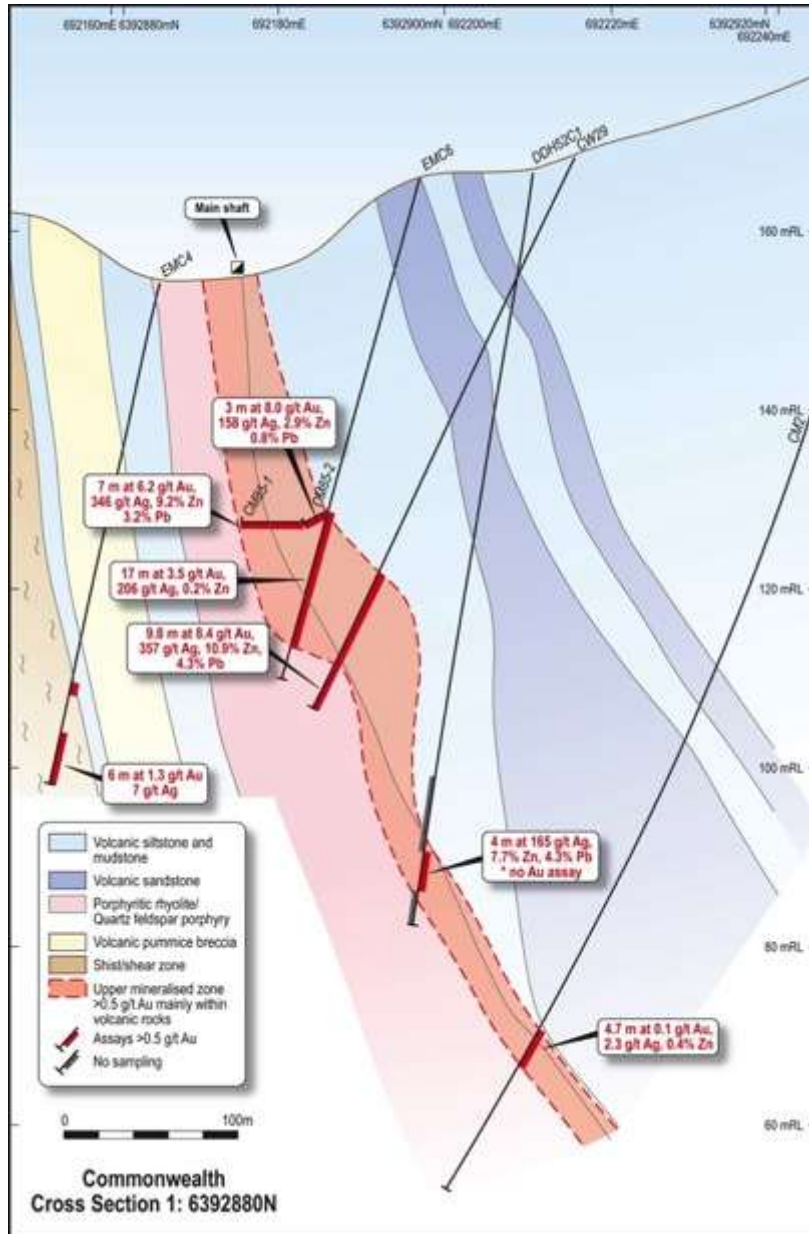
- Gold-rich Massive Sulphide Deposit
- Mined 1906-1930's
6500 t at 6 g/t Au, 150 g/t Ag, 2% Cu, 15% Zn & 7% Pb
- Poorly explored:
66 drill holes for an average depth of 53 metres.
- Previous exploration focus along 250 m strike at Commonwealth
- Acquisition in March 2013
- EL5874: 3-4 km strike potential

Main Shaft Prospect

- Historic resource estimate over 50 m strike to 50 m depth indicates potential for multiple lenses of high grade massive sulphide
- Potential for significant deposit beneath & along strike from Main Shaft



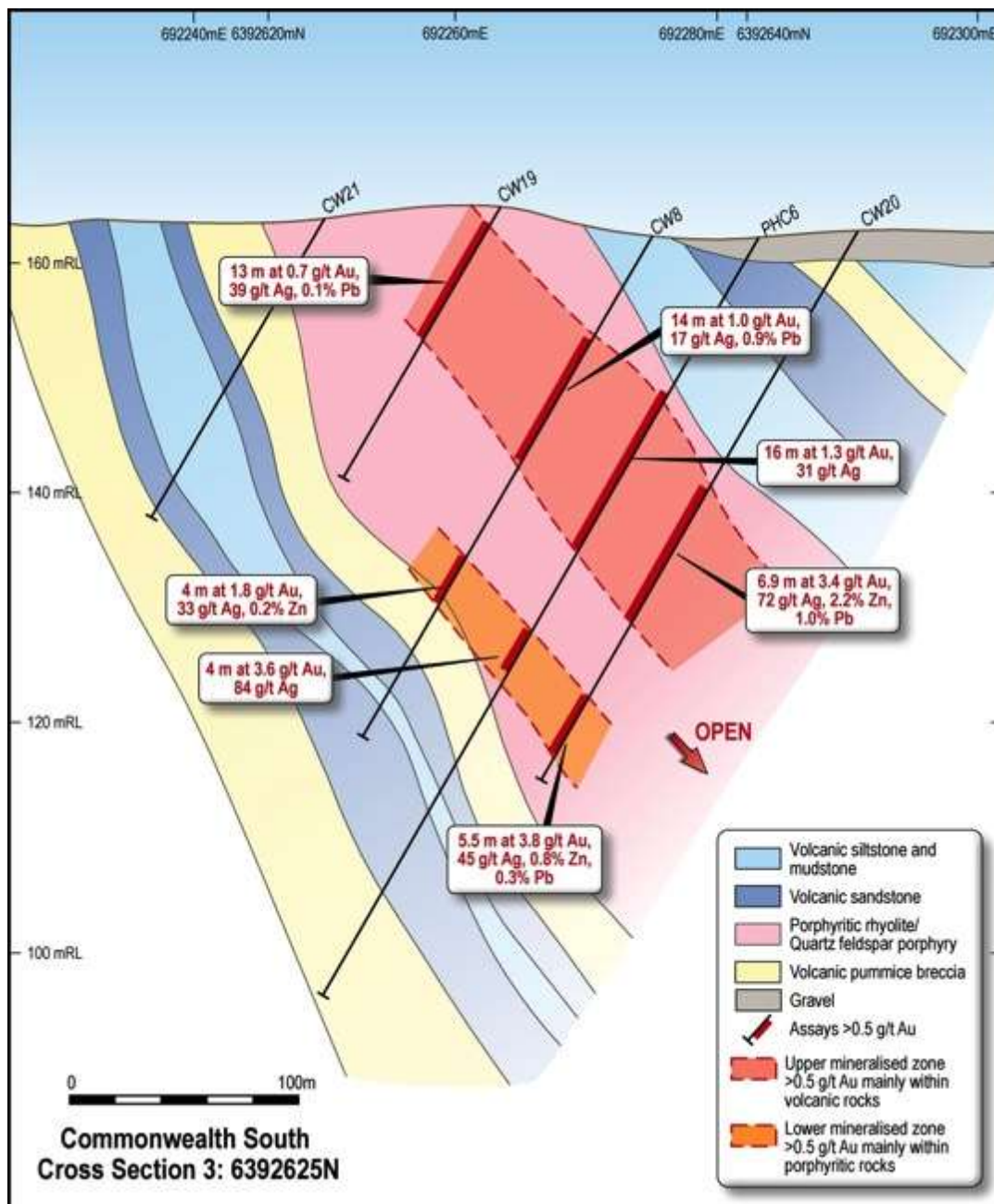
Commonwealth: Main Shaft



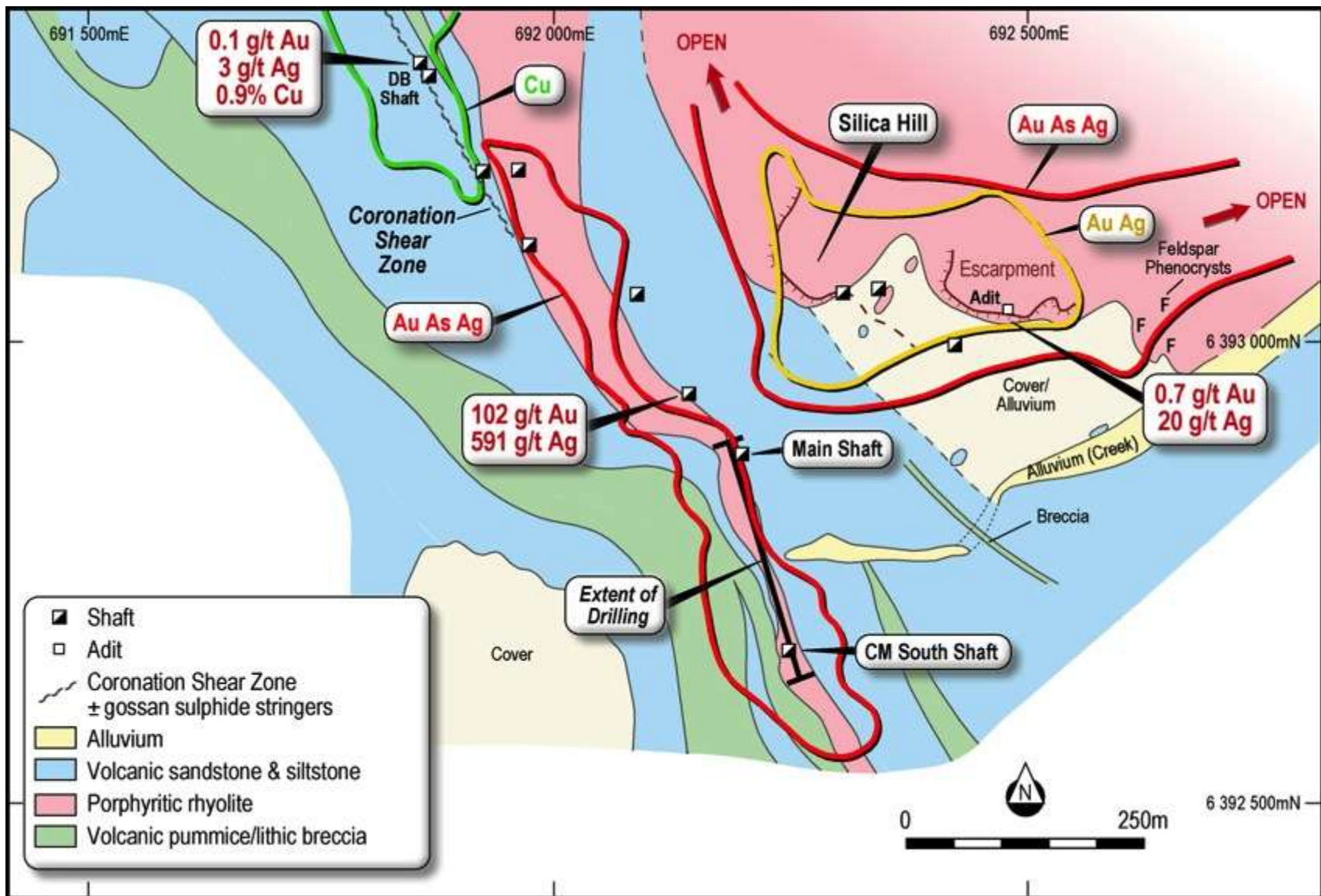
- High grade massive sulphide mineralisation
- Underground mining potential
- Open at depth and down plunge
- **9.8 m at 8.4 g/t gold, 357 g/t silver, 4.1% lead, 9.3% zinc, 0.5% copper**
- **4 m at 165 g/t silver, 7.7% zinc, 4.3% lead (no gold assay)**

Commonwealth South

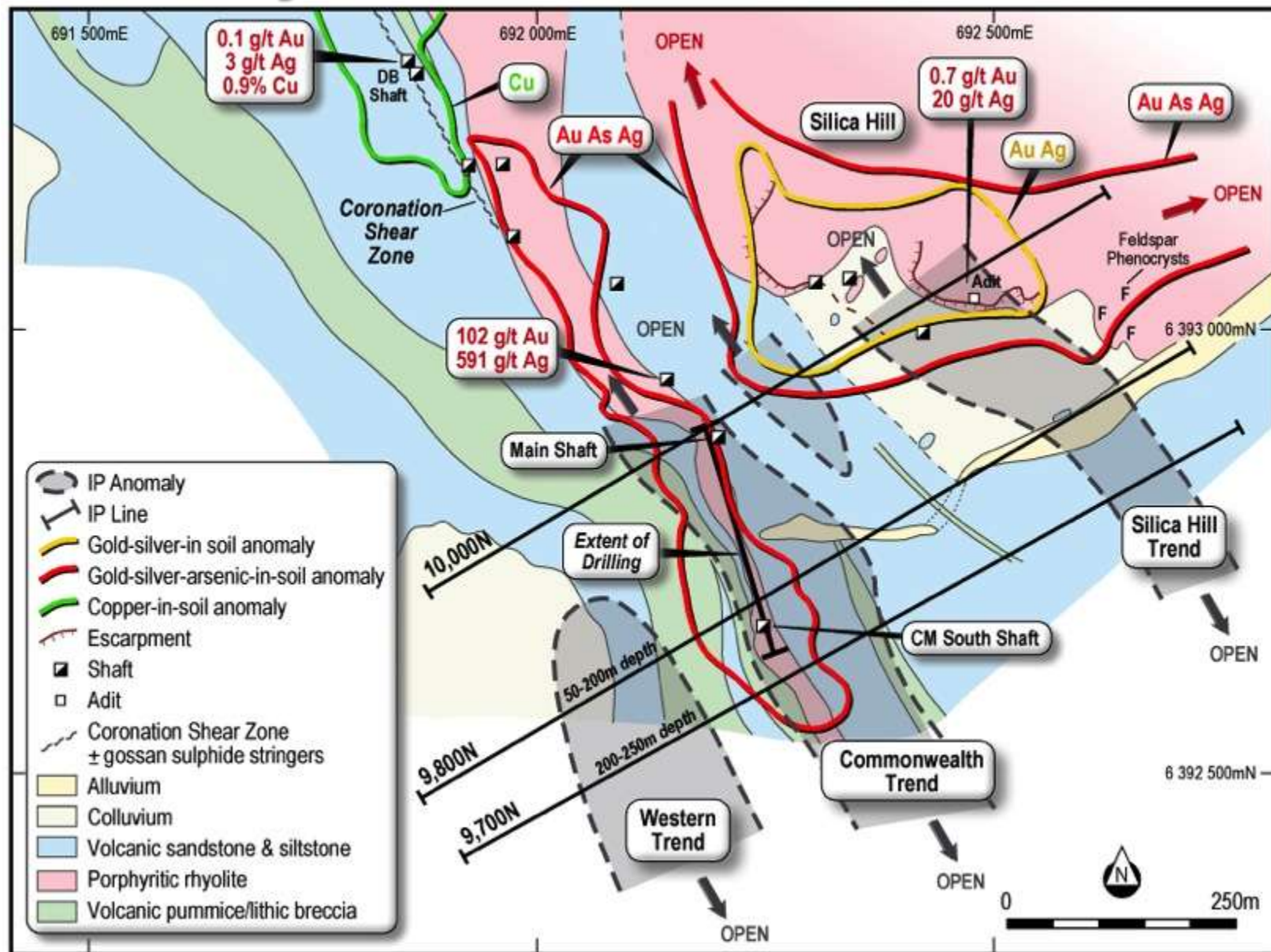
- Gold-silver-rich disseminated mineralisation
- Open pit bulk mine potential
- **Combined 13 m at 3-4 g/t gold, 45-72 g/t silver, up to 2% Zn and 1% Pb**
- **30 m at 6 g/t gold and 17 g/t silver**
- Open at depth and down plunge



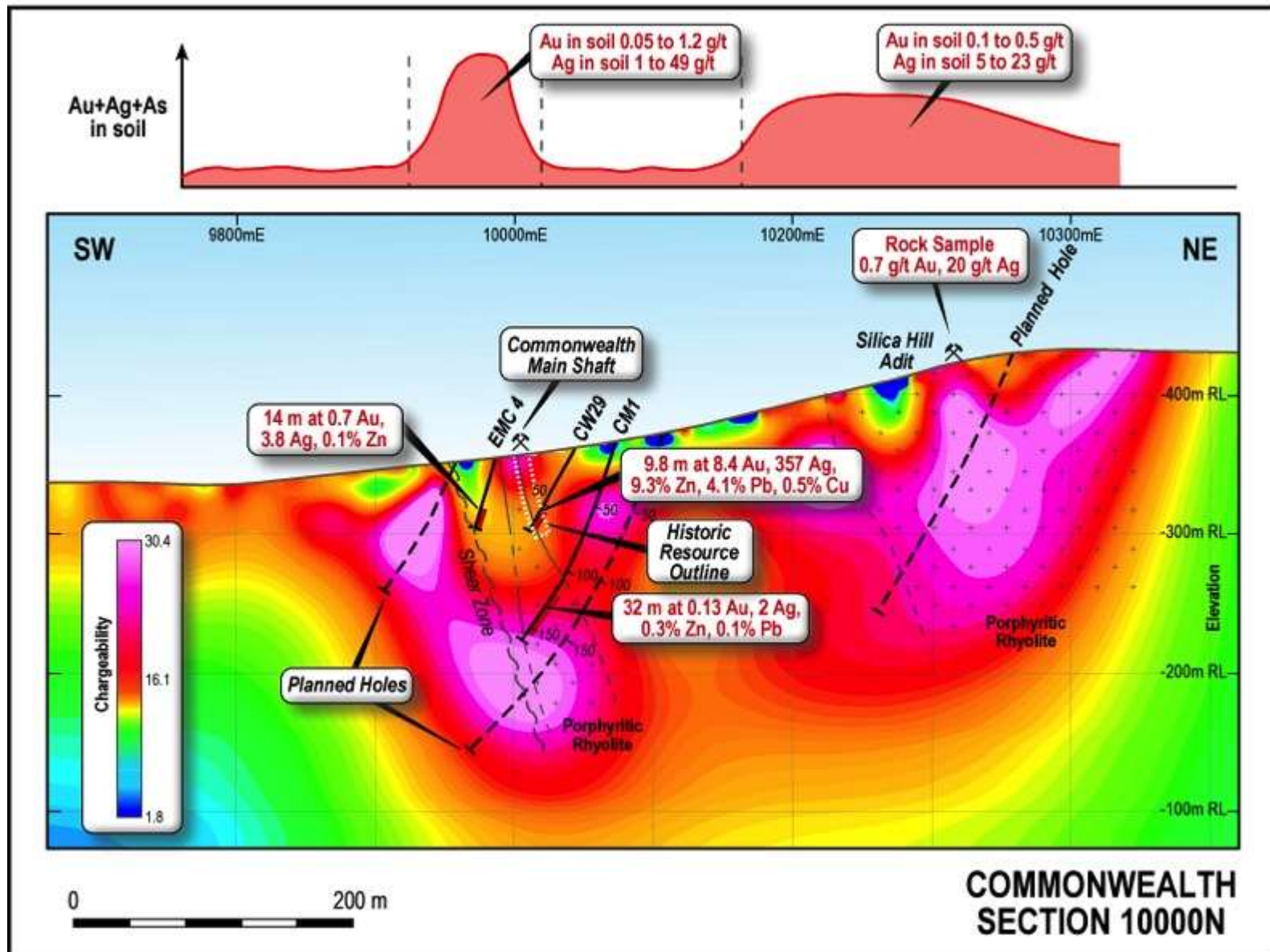
What's hiding under Silica Hill?!



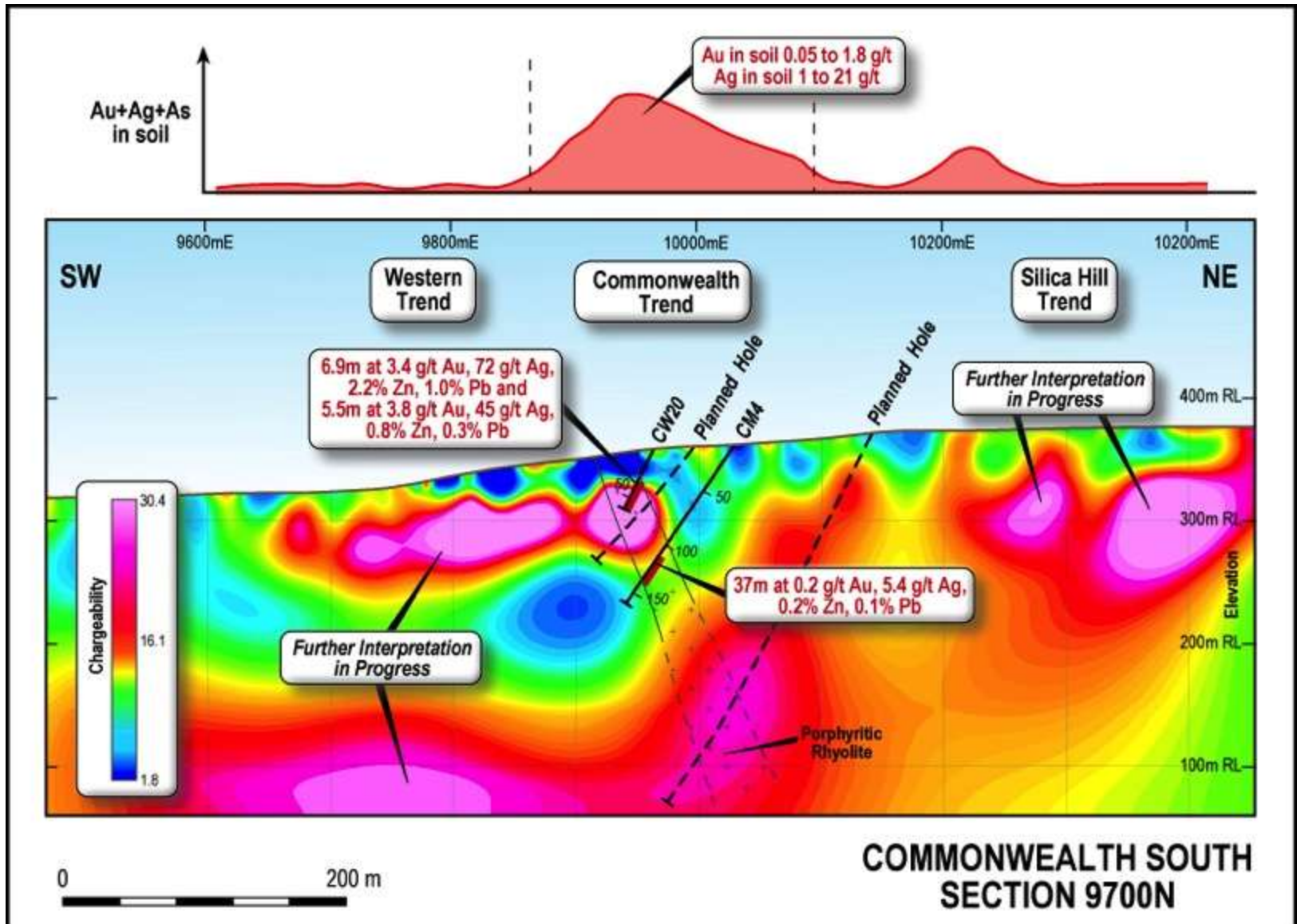
IP Survey identifies three trends



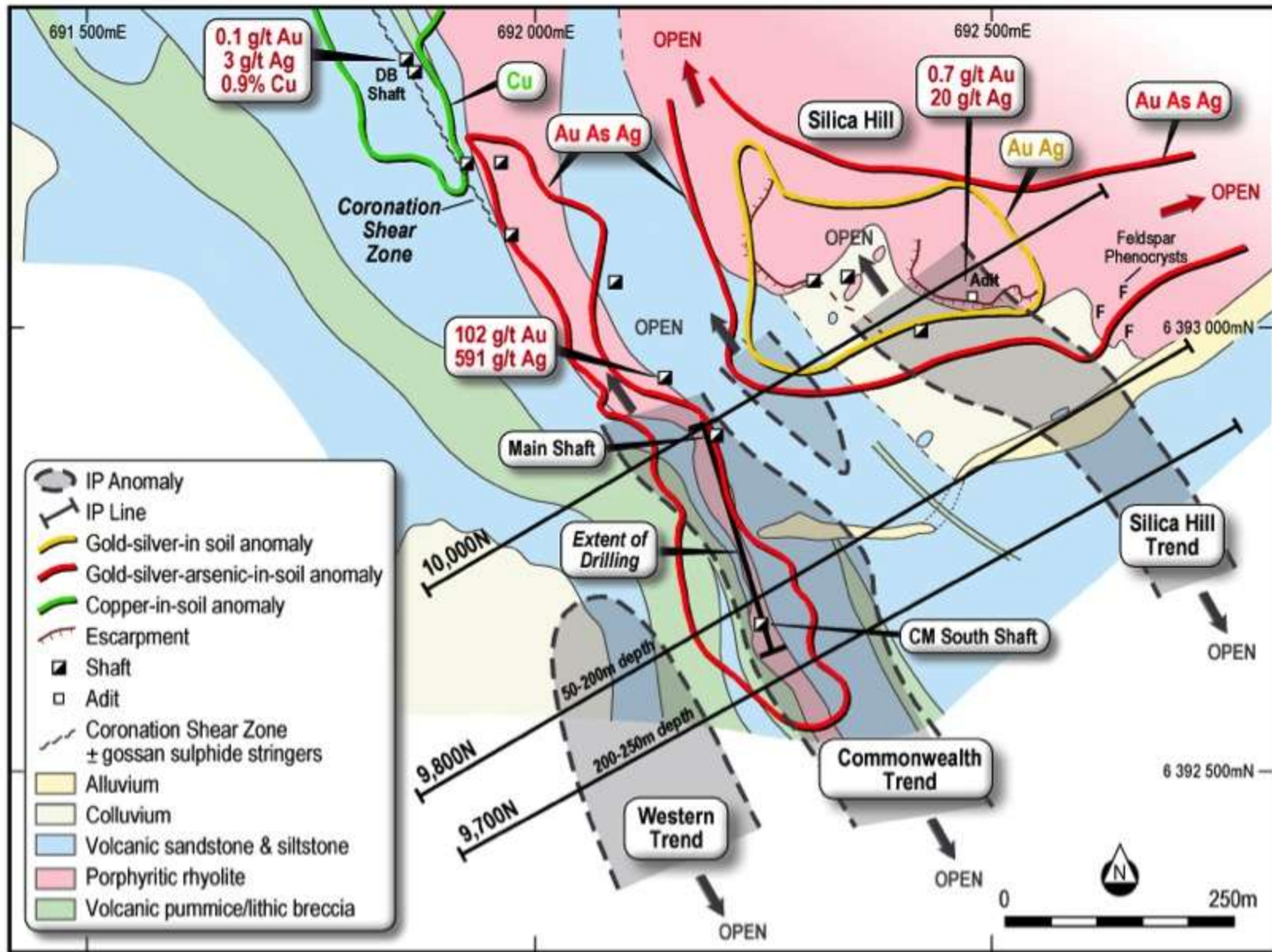
Ground IP Survey: Main Shaft and Silica Hill



Ground IP Survey: Commonwealth South

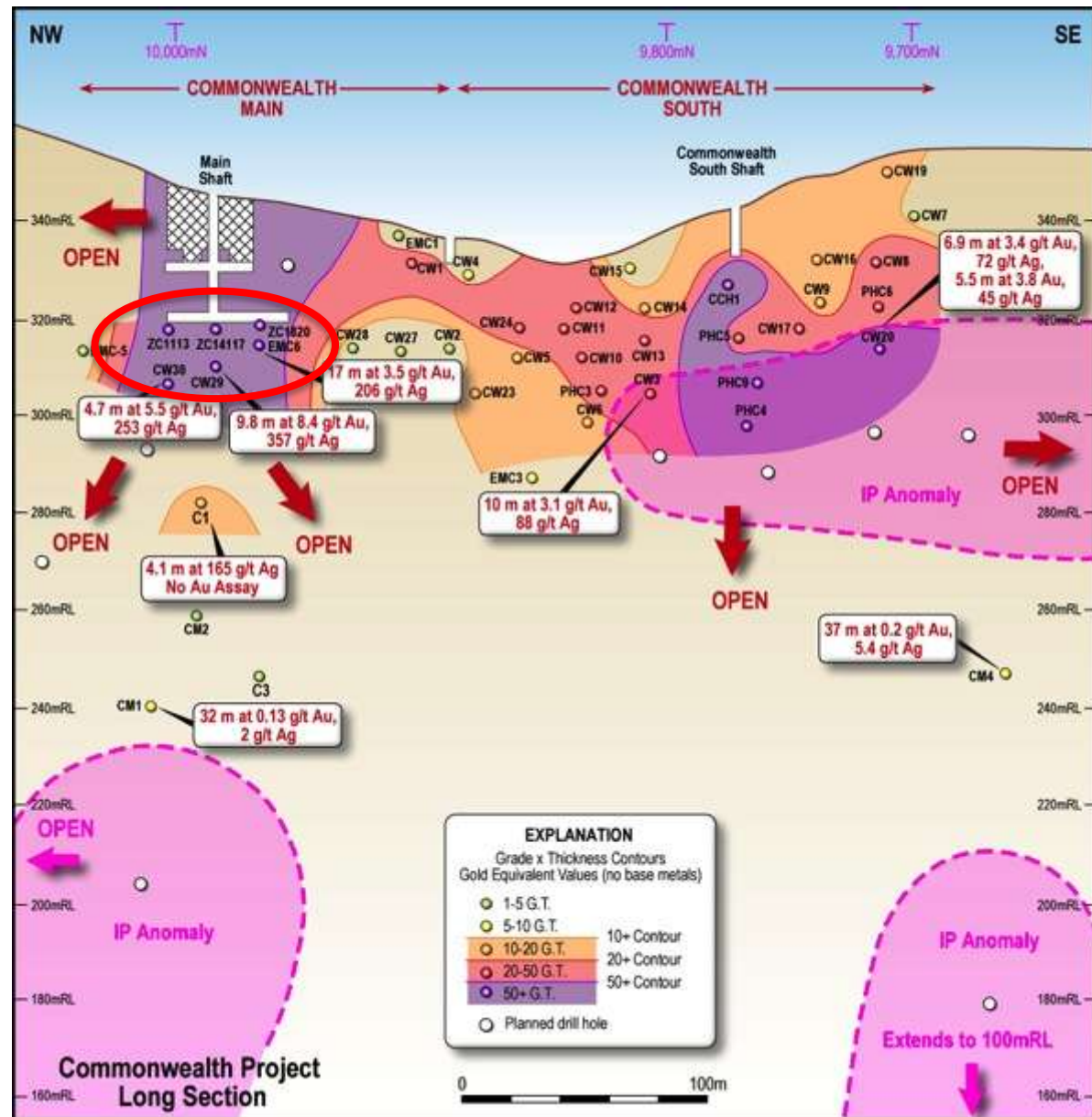


Three Mineralised Trends?



Commonwealth: Potential at Depth

- High grade gold-silver results open along strike and at depth at:
 - Main Shaft**
 - Commonwealth South**
- High value ore per tonne
- IP targets at depth



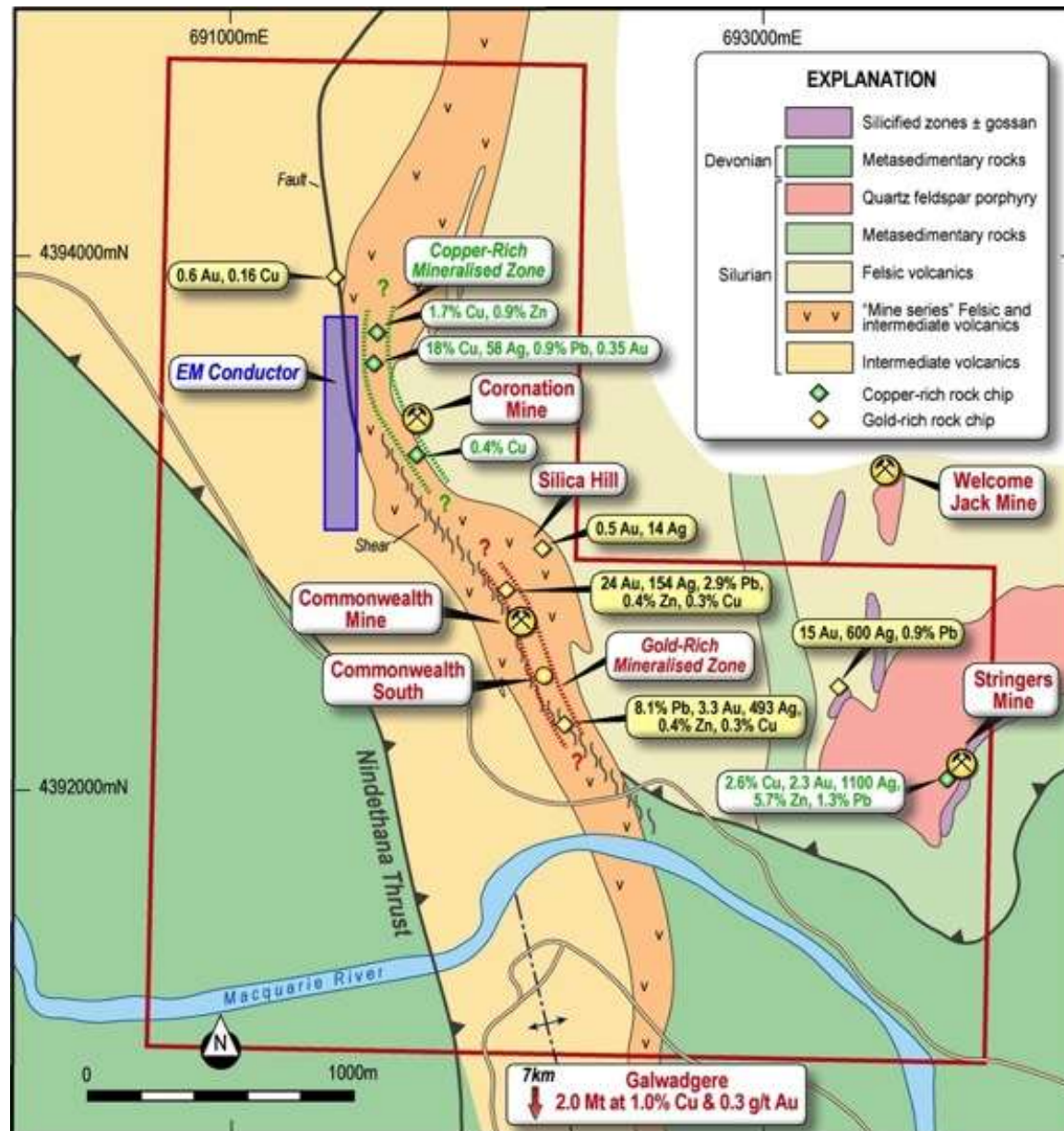
Commonwealth: Potential along strike

COMMONWEALTH

- Grab sample results up to **24 g/t Au, 493 g/t Ag, 2.9% Pb, 0.4% Zn, 0.3% Cu**
- Gold-rich mineralisation doubled strike to 600 m
- Preliminary IP results: strong chargeability at 200 m depth

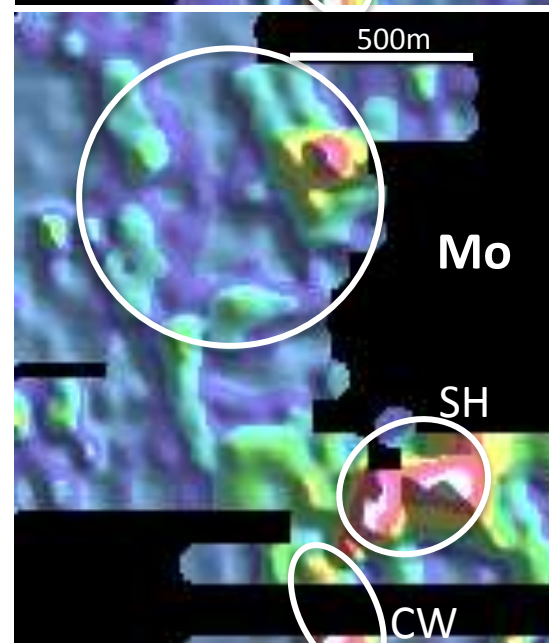
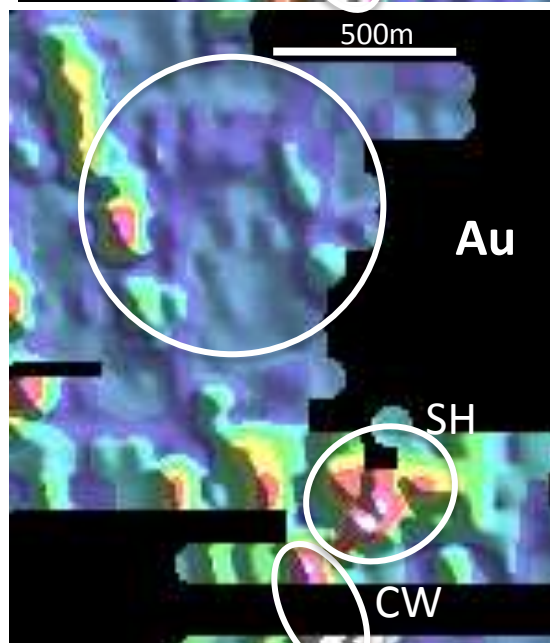
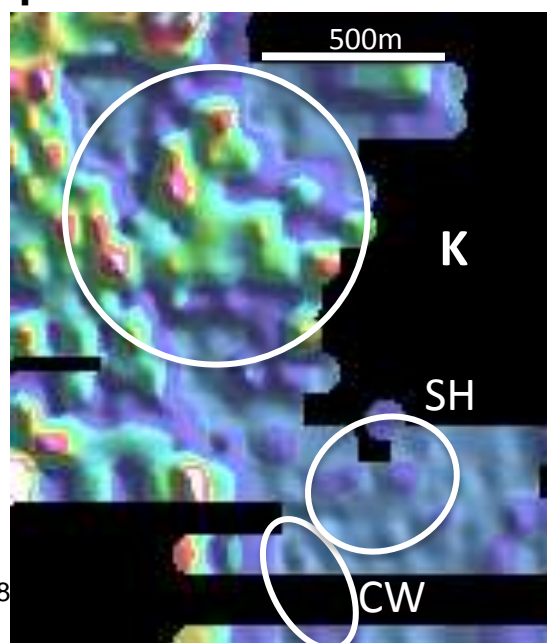
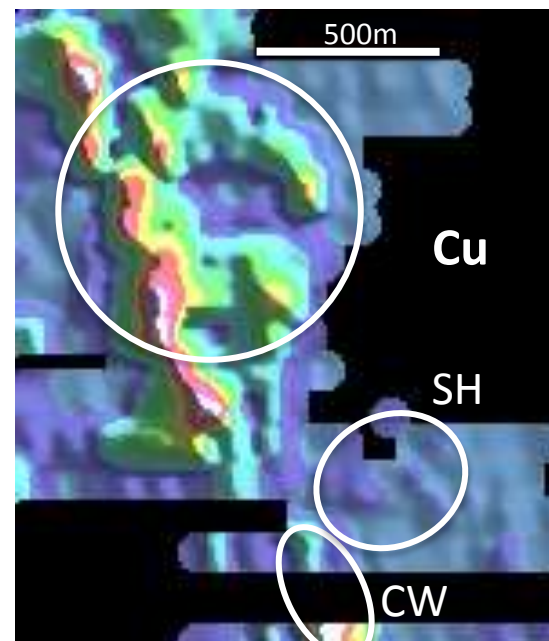
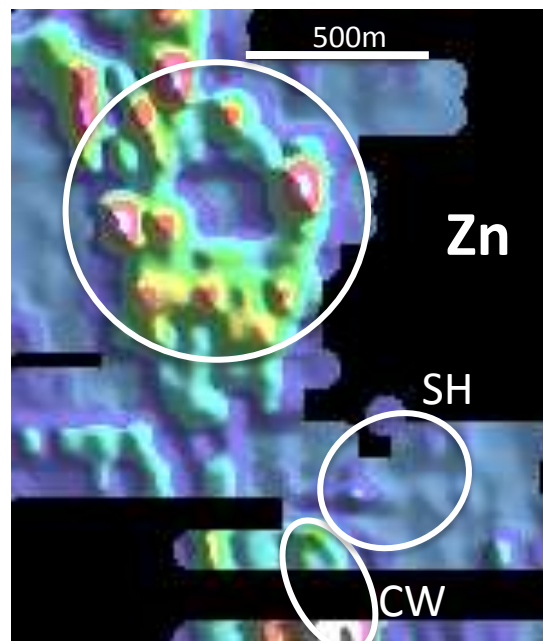
CORONATION

- Early- to mid-time conductors identified over 800 m
- Field checking results up to **18% copper, 58 g/t silver, 0.9% lead, 0.9% zinc, 0.35 g/t gold**
- 800 m strike copper-rich mineralisation

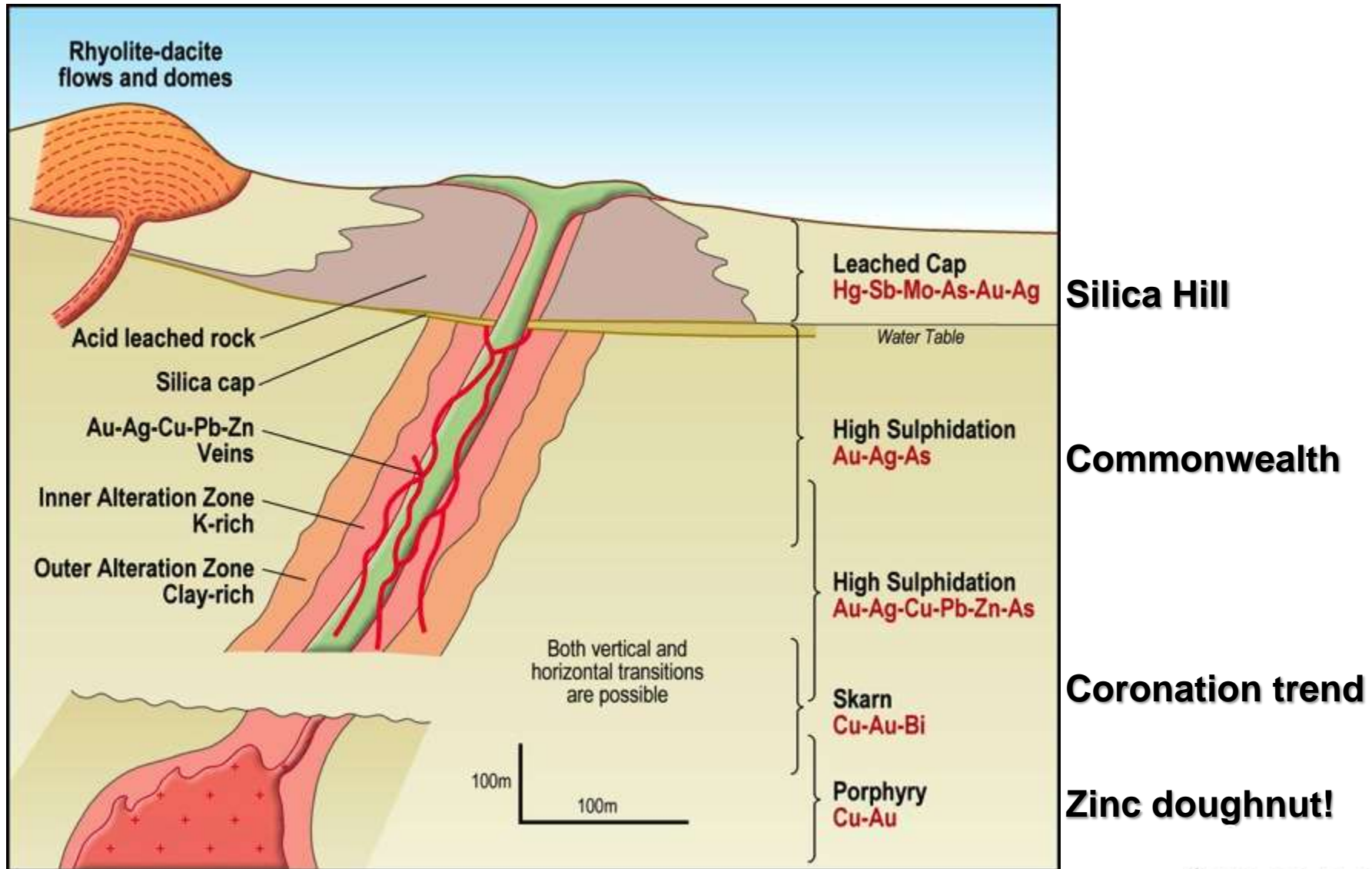


Commonwealth: Major porphyry potential?

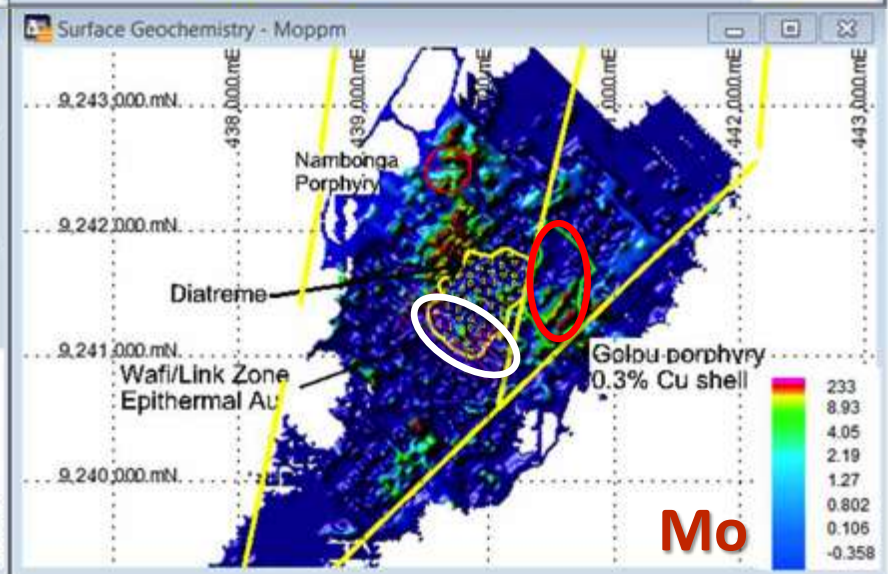
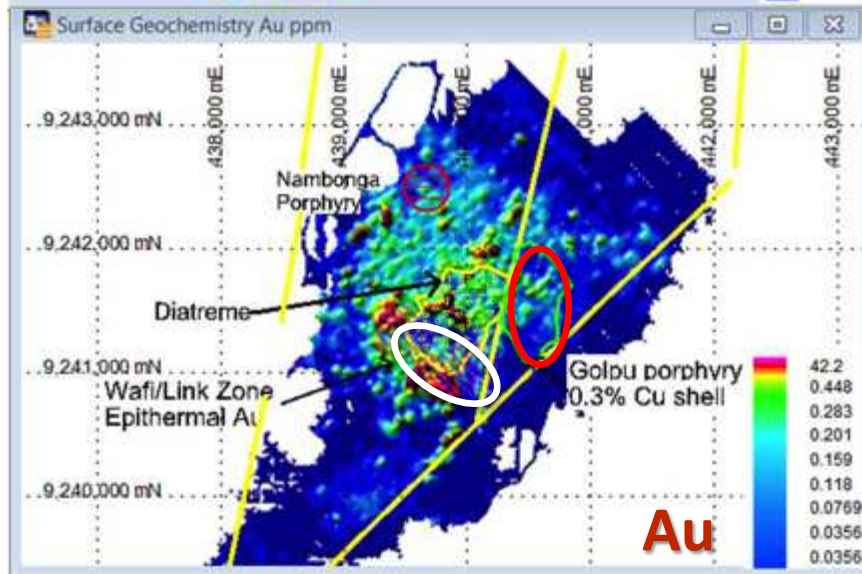
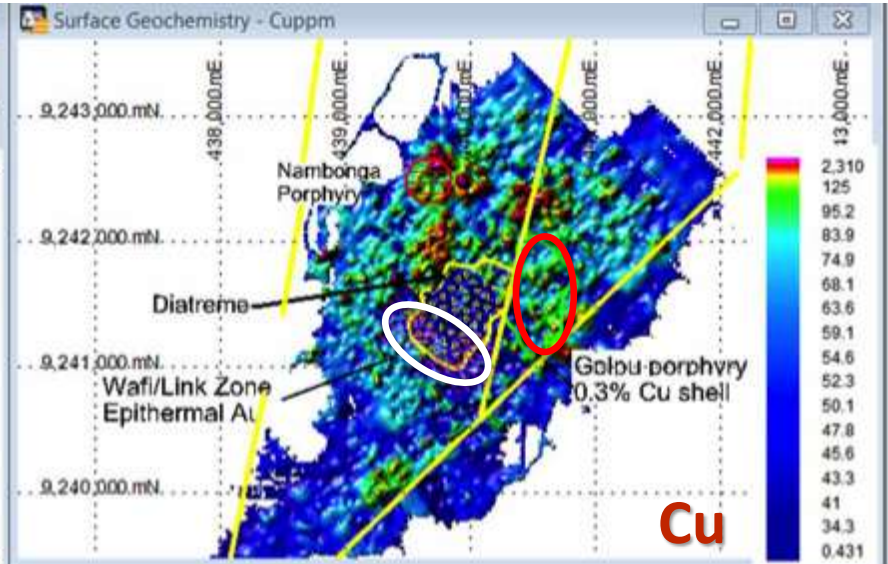
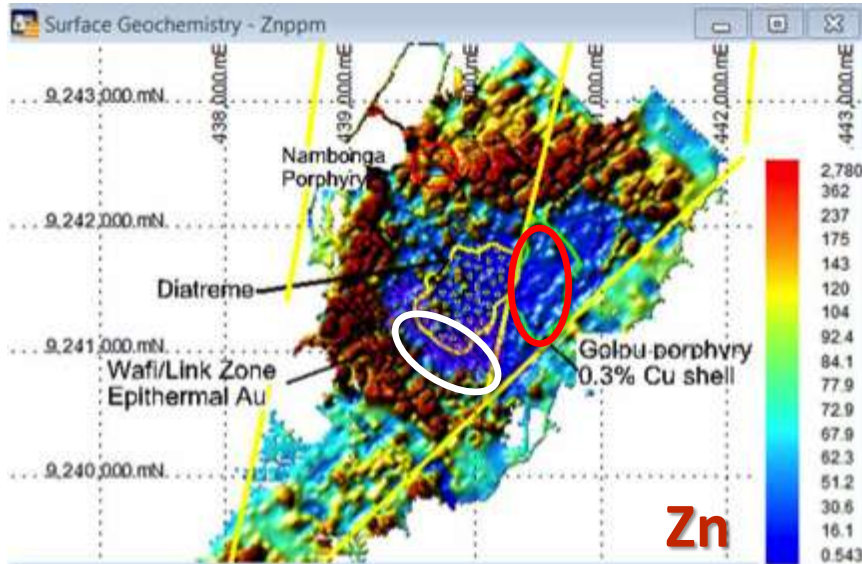
- Recent soil geochemistry results reveal potential for major mineralised system covering many sq. km.
- Recognition of metal-assemblages indicating
 - Porphyry & Skarn Cu-Au
 - High sulphidation Au-Ag-base metal
- Major breakthrough for Impact



Commonwealth: Major porphyry potential?

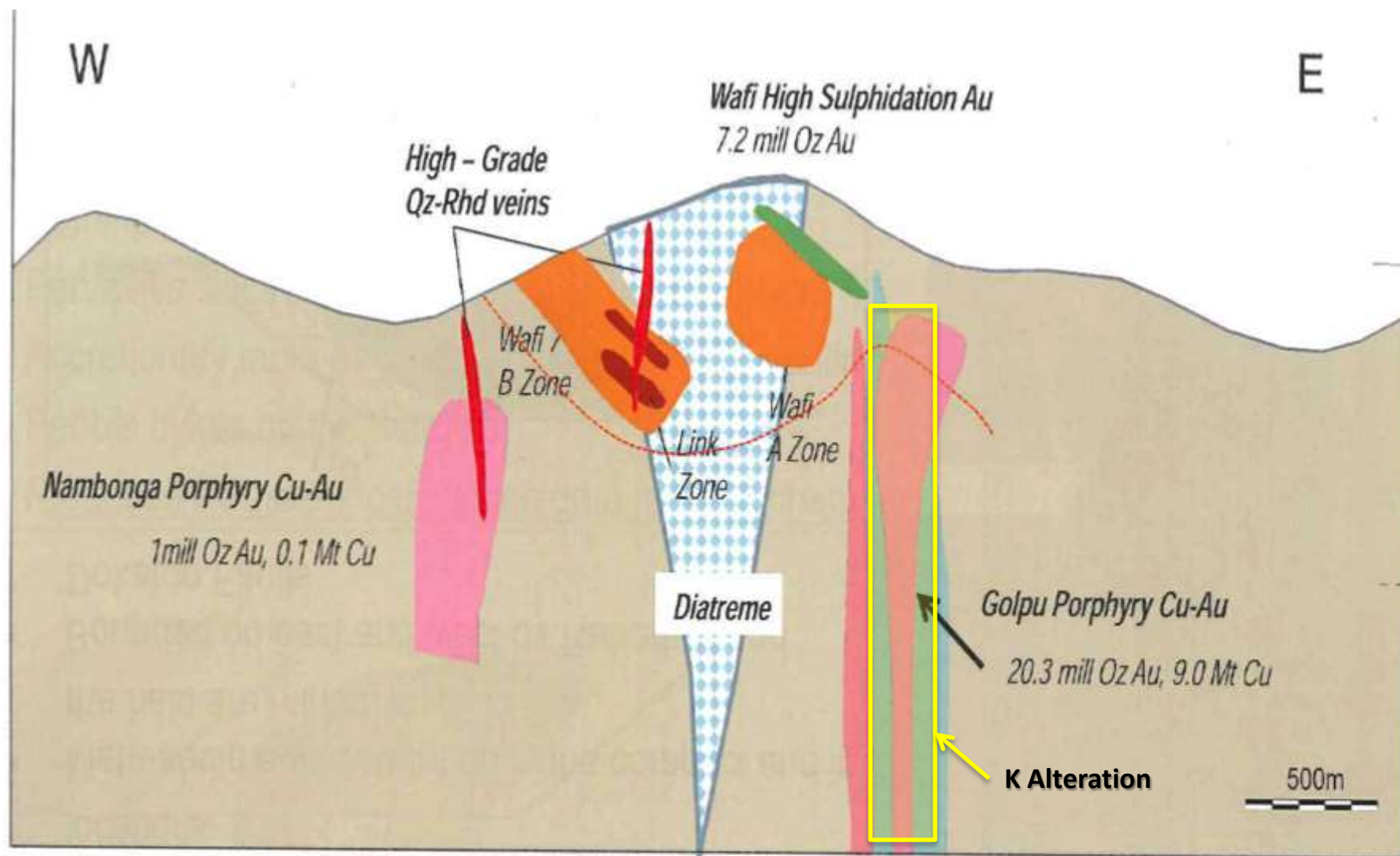


Wafi-Golpu Analogy (75 Moz Au eq)



✓ Look for tasty 'donuts'

Wafi-Golpu Analogy

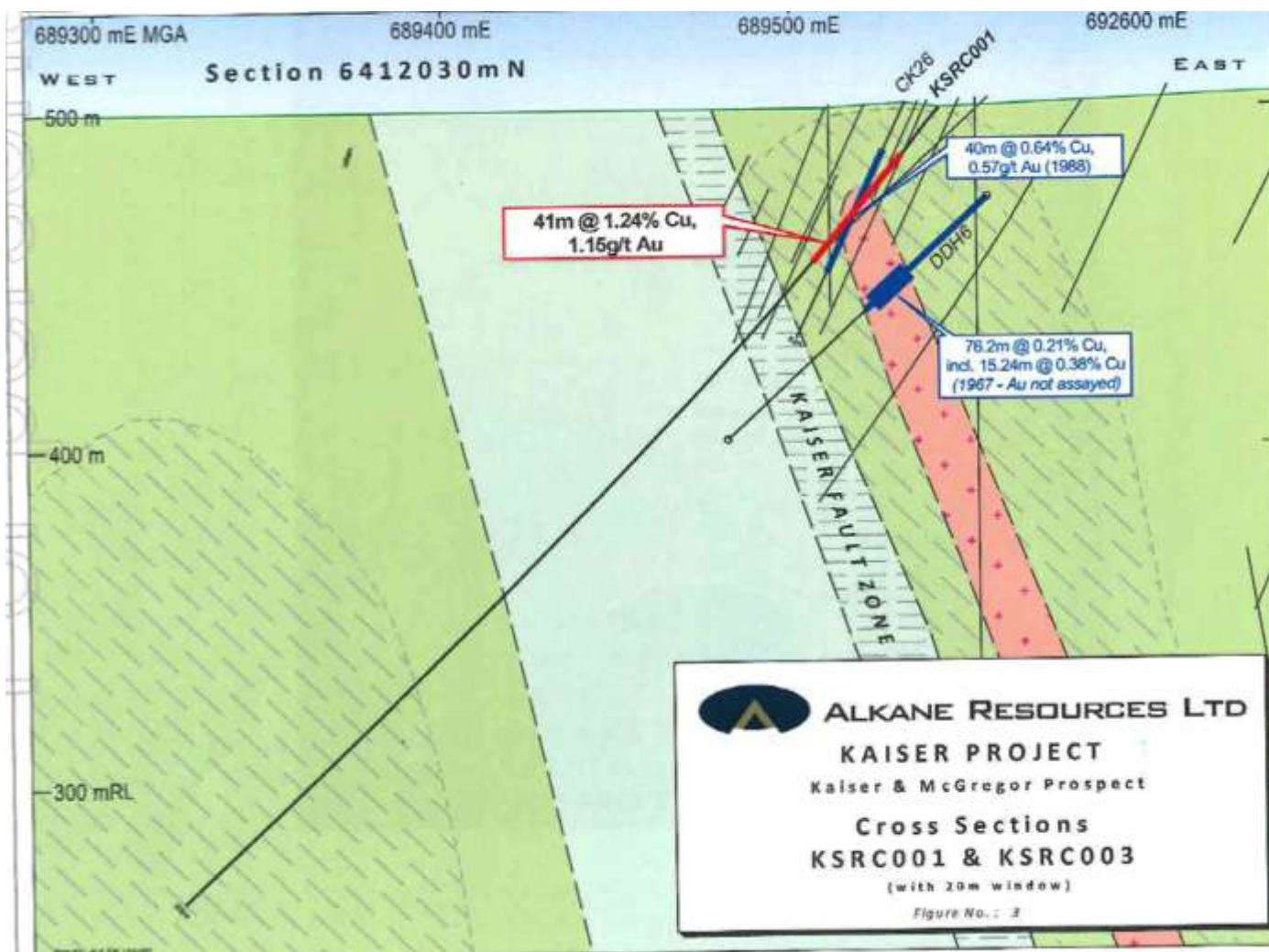


Commonwealth: Regional Potential

- Secured a further 315 sq km
- 8 km strike potential rocks that host Commonwealth
- 10 km strike potential of structures that host Galwagdere deposit :
(2 Mt at 1.0% Cu and 0.3 g/t Au)
- Additional historic copper-gold workings
- Close to recent blind porphyry discovery at Kaiser-MacGregor by Alkane Resources Ltd
41 m at 1.2% Cu and 1.1 g/t Au from 18 m
32 m at 0.4% Cu and 0.1 g/t Au from 109 m



Blind Porphyry Discovery at Kaiser-MacGregor



- 41 m at 1.2% Cu and 1.1 g/t Au from 18 m
- 32 m at 0.4% Cu and 0.1 g/t Au from 109 m

Commonwealth: Next Steps

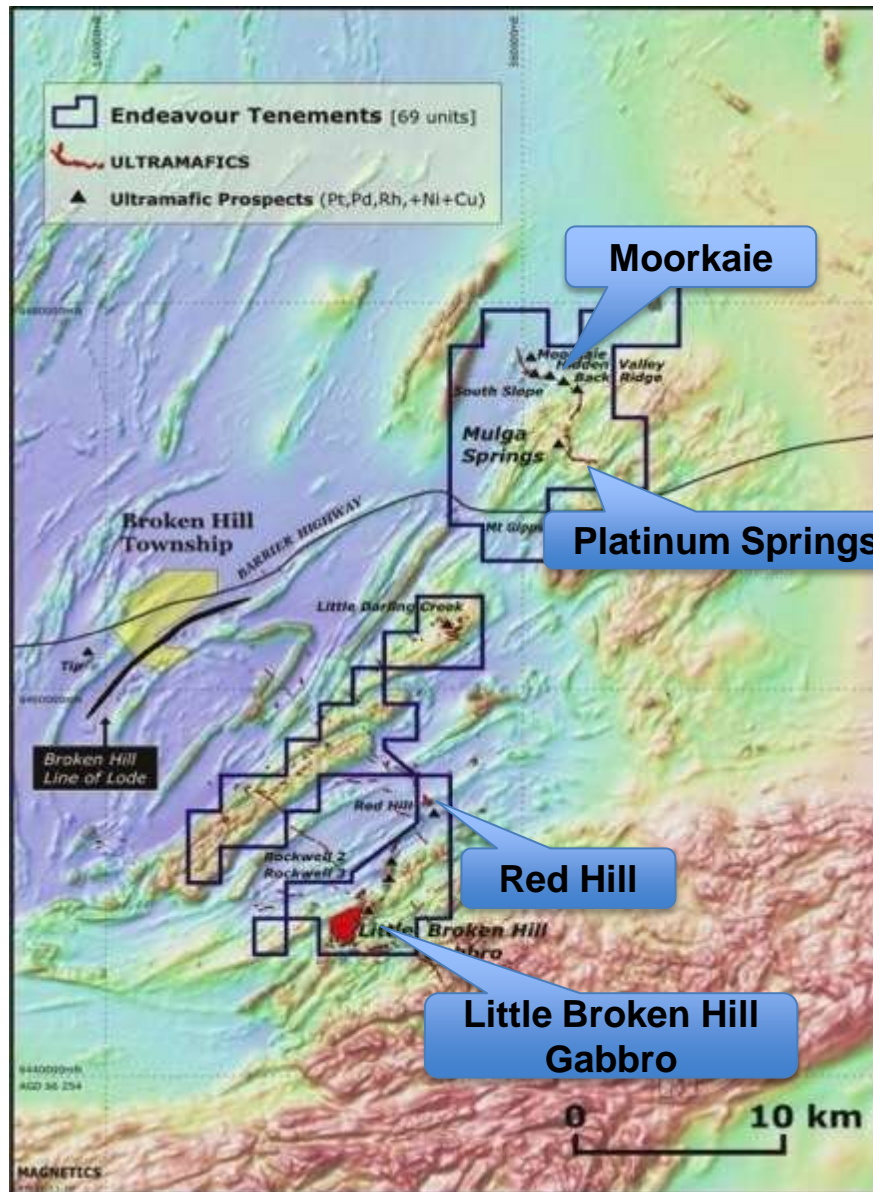
- Drill programme to commence in Q3 2014
- 2,500 m programme
- Demonstrate potential for **multi-million ounces gold eq. in a high sulphidation porphyry system**
- Define plunge of ore shoots, and discover new lenses of mineralisation at Commonwealth
- Discoveries at Silica Hill and Coronation?!



**Broken Hill
Nickel-Copper-PGM
Joint Venture Project
New South Wales
Impact earning 80%**

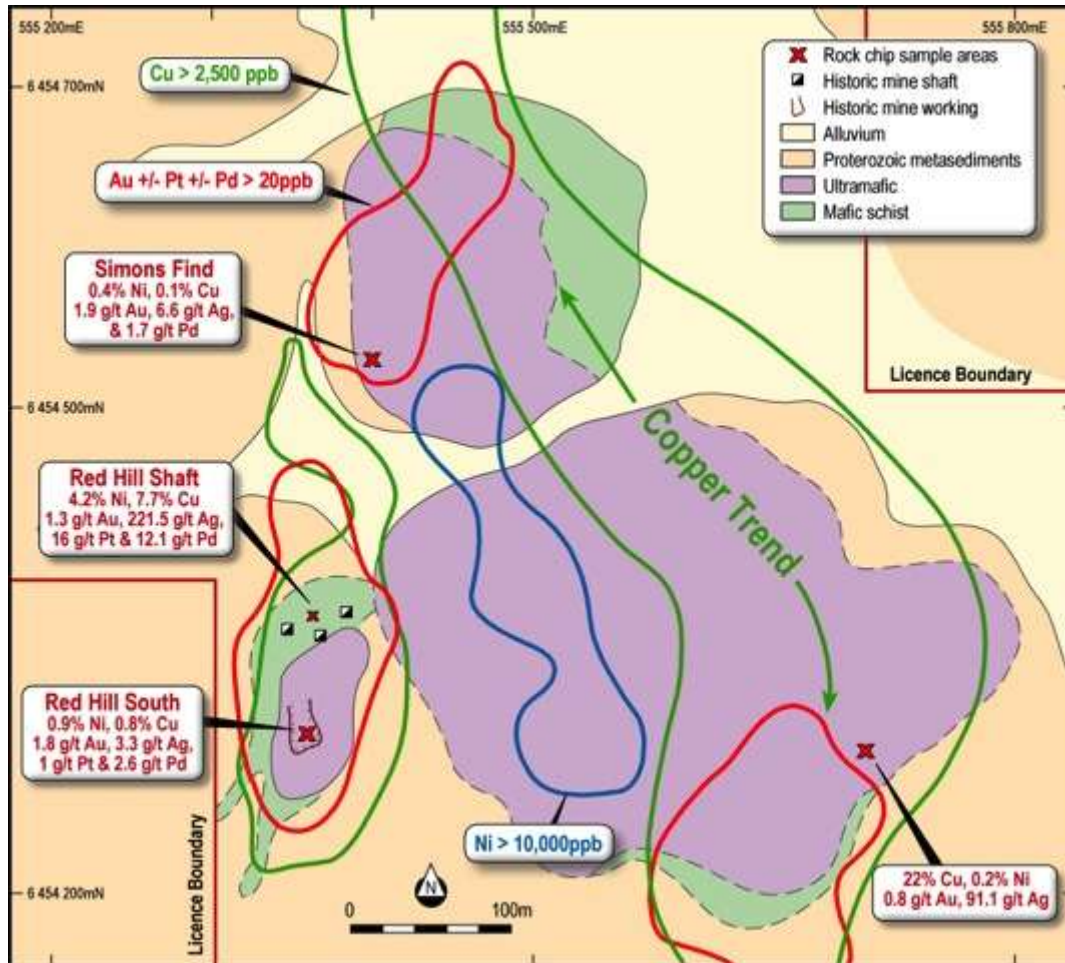
IPT required to spend \$50,000 to earn 51%
and a further \$200,000 to earn 80%

Broken Hill Ni-Cu-PGE JV Project



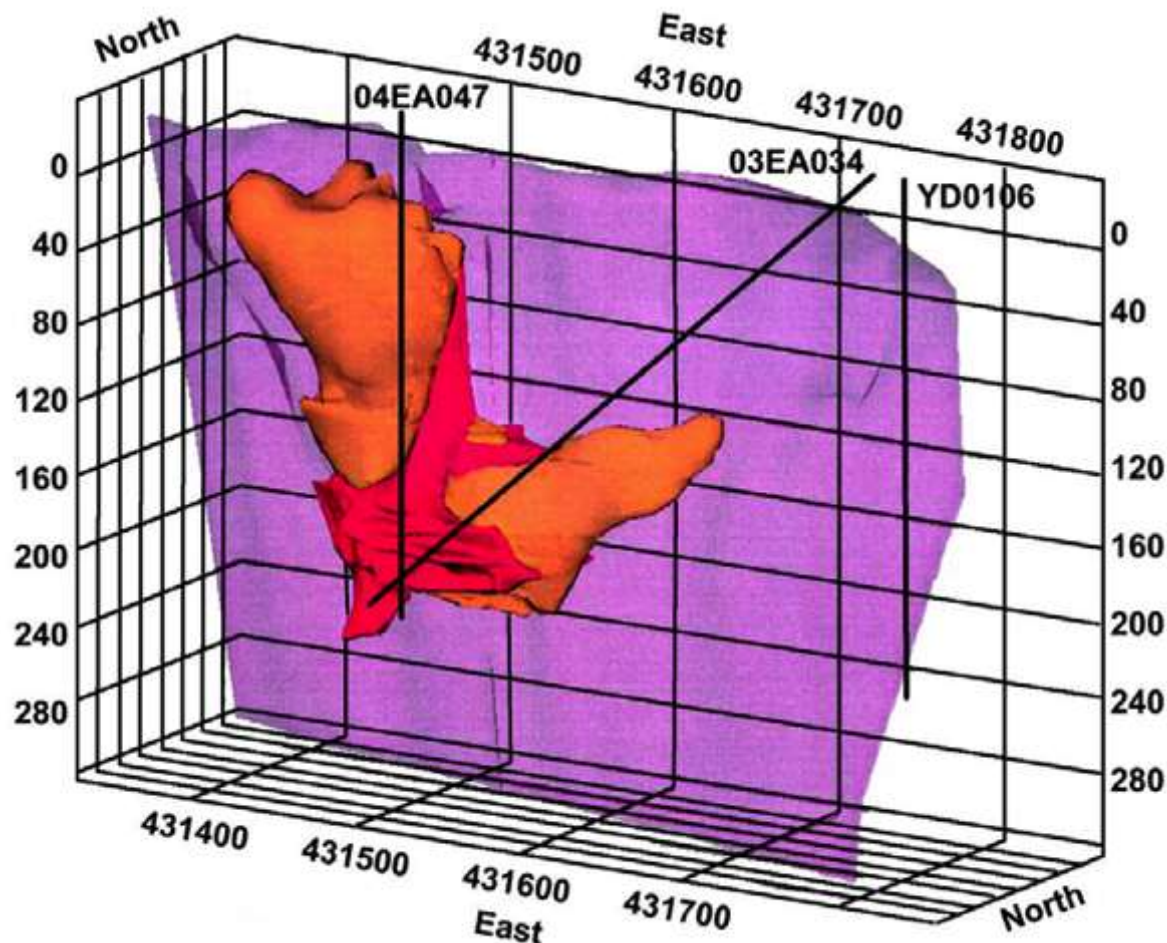
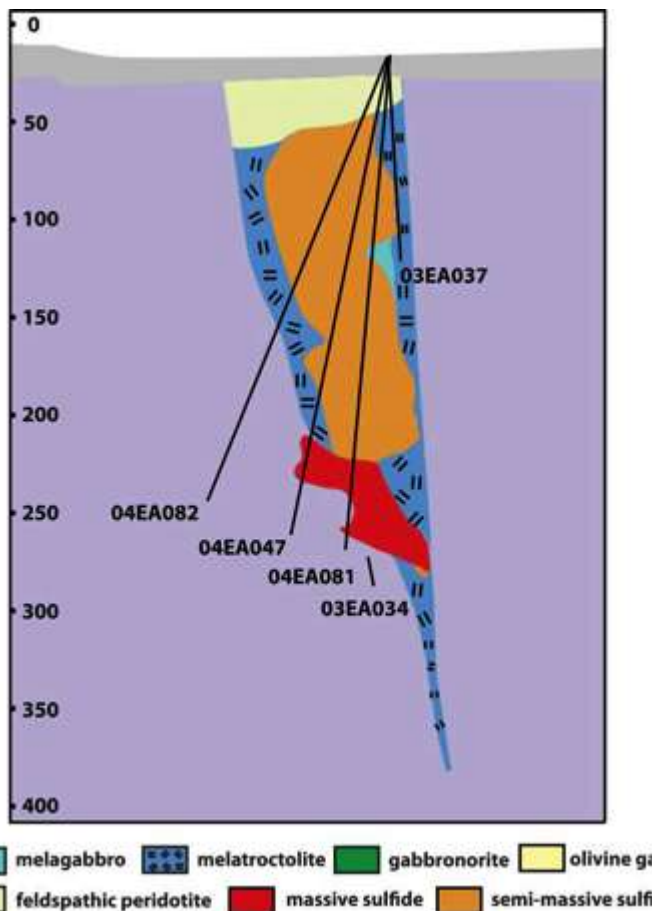
- Located in the richly mineralised NSW Curnamona Province
- **4 priority targets including:**
 - **Red Hill:** Eagle analogy: 5Mt @ 3.7%Ni and 3% Cu
 - **Platinum Springs:** drill intercepts of >20 g/t platinum-palladium and 6% copper and 4% nickel
- Highest platinum grades in Australia
- Possible early discovery at Red Hill: Mineralised mafic and ultramafic dykes and sills with high grade gossans over a 35 km belt
- Impact to earn 80% by spending a further \$250,000 by Nov 2017

Red Hill Mine Prospect



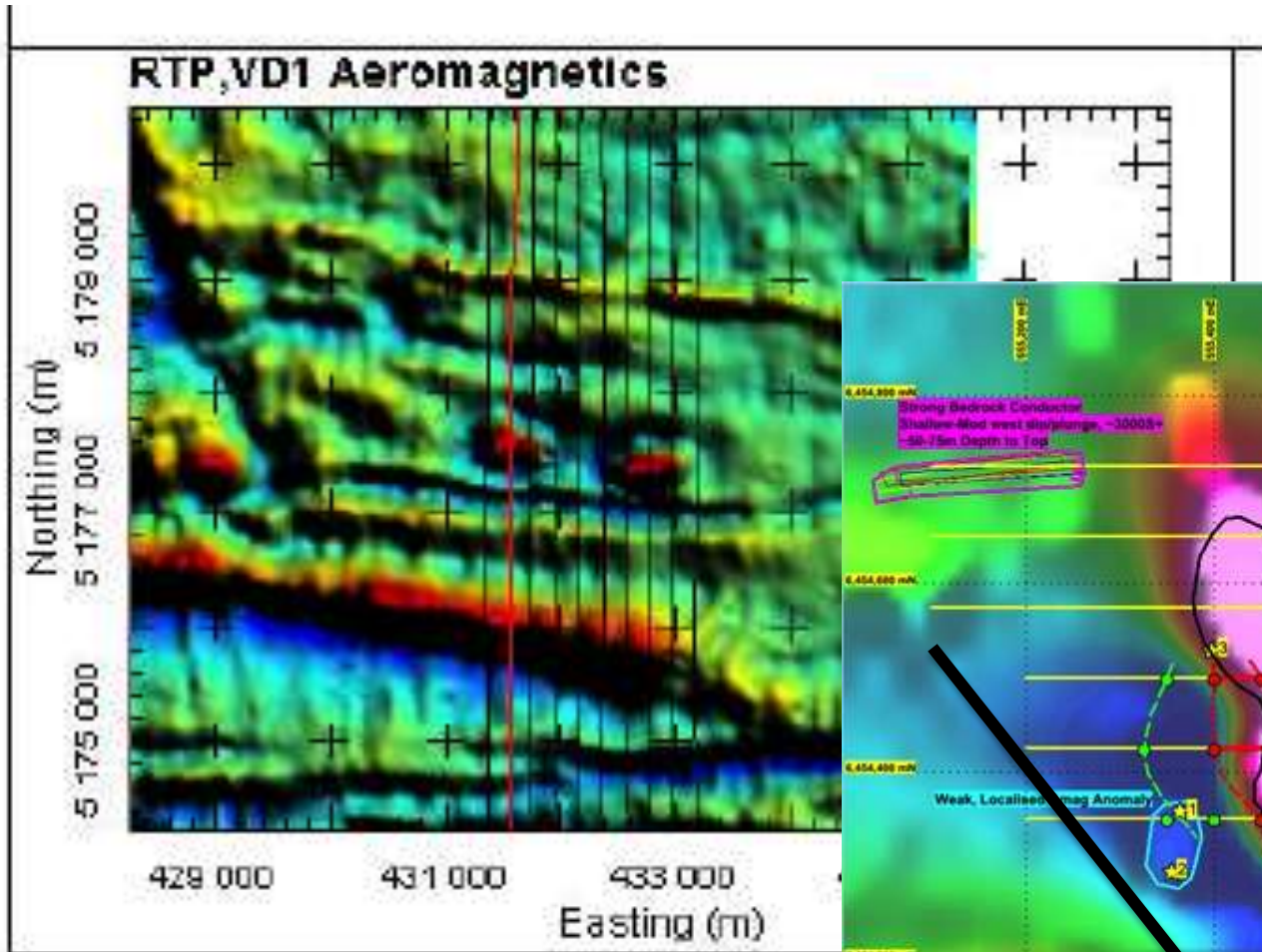
- Red Hill Mine active from 1906 to 1937
- About 500 t was mined
- Old mine records indicate face sample results of:
 - **2 to 4%** copper
 - **2 to 3%** nickel
 - **5 to 41 g/t** platinum
 - **22 to 70 g/t** silver
- Anomalous soil and rock chip samples extend for several hundred metres to the east
- **NO DRILLING**
- Partly coincident with EM/IP anomaly
- **Drill Ready Targets**

Eagle: 5Mt @ 3.7%Ni and 3%Cu

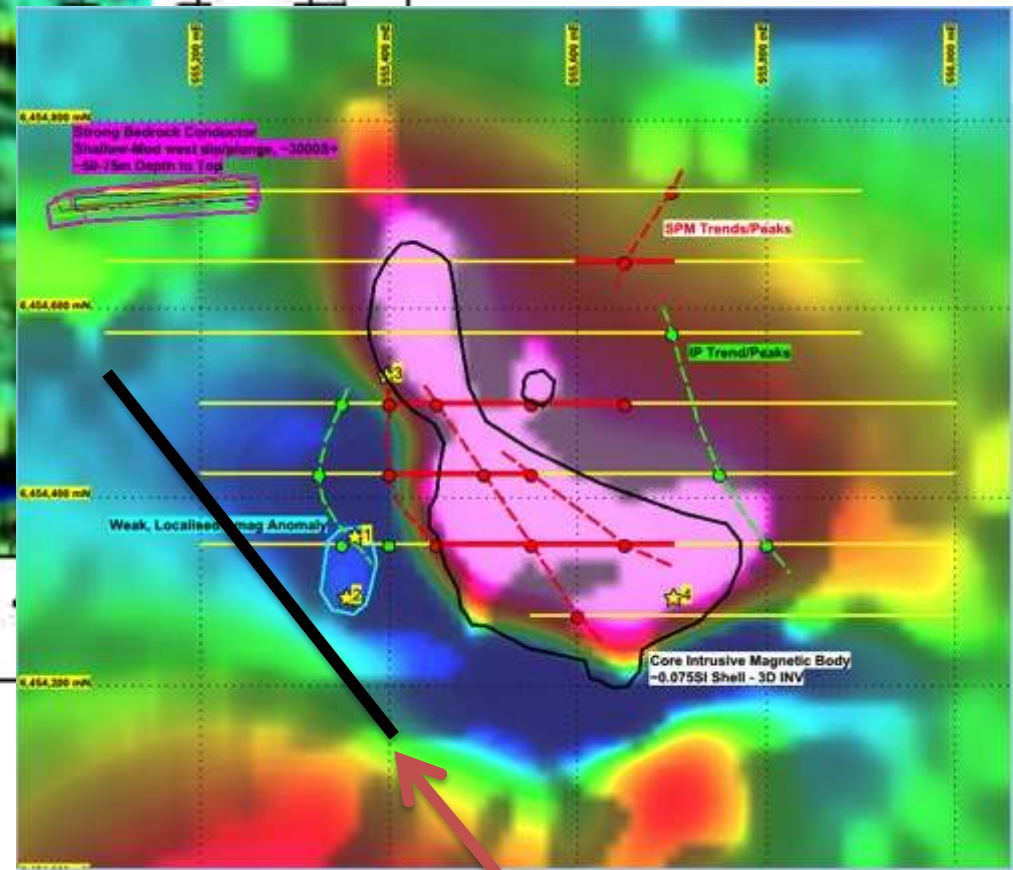


Not detected by EM!!

Red Hill: an Eagle Analogue?



Eagle intrusions



Red Hill

Size of Eagle Intrusion

Broken Hill: Next Steps

- Drill programme to commence in Q3 2014
- 1,500 m programme
- Drill EM and IP targets at Red Hills
- Drill beneath the Red Hill mine workings
- Discovery of high grade Eagle Analogue and demonstrate multi-million ounce Pt-eq potential