



## ASX ANNOUNCEMENT

Date: 27 November 2014

Number: 379/271114

---

### **2014 ANNUAL GENERAL MEETING PRESENTATION BY MANAGING DIRECTOR**

Attached is a presentation which will be delivered to the Company's Annual General Meeting by its Managing Director, Dr Michael Jones.

A copy of this presentation will be posted on Impact's website [www.impactminerals.com.au](http://www.impactminerals.com.au).

Yours faithfully

James Cooper-Jones  
Company Secretary

# AGM Presentation

Managing Director: Dr Mike Jones  
November 2014



***Commonwealth, NSW***



***Broken Hill, NSW***



***Mulga Tank, WA***

# Introducing Impact Minerals (ASX:IPT)

<b>Listed on ASX</b>	November 2006
<b>Shares on Issue</b>	566m
<b>Options</b>	8 m listed IPTO 34m unlisted
<b>Share Price</b>	2.5¢
<b>Market Cap:</b>	\$14m
<b>Key Projects</b>	Commonwealth Au-Ag-Zn-Pb-Cu (NSW) Broken Hill Joint Venture: Ni-Cu-PGM (NSW) Mulga Tank Joint Venture: Ni-Cu-PGM (WA) Botswana Uranium Project



## Shareholders

Bunnenberg Family	30%
Directors	9%
Top 20	56%
Top 50	65%

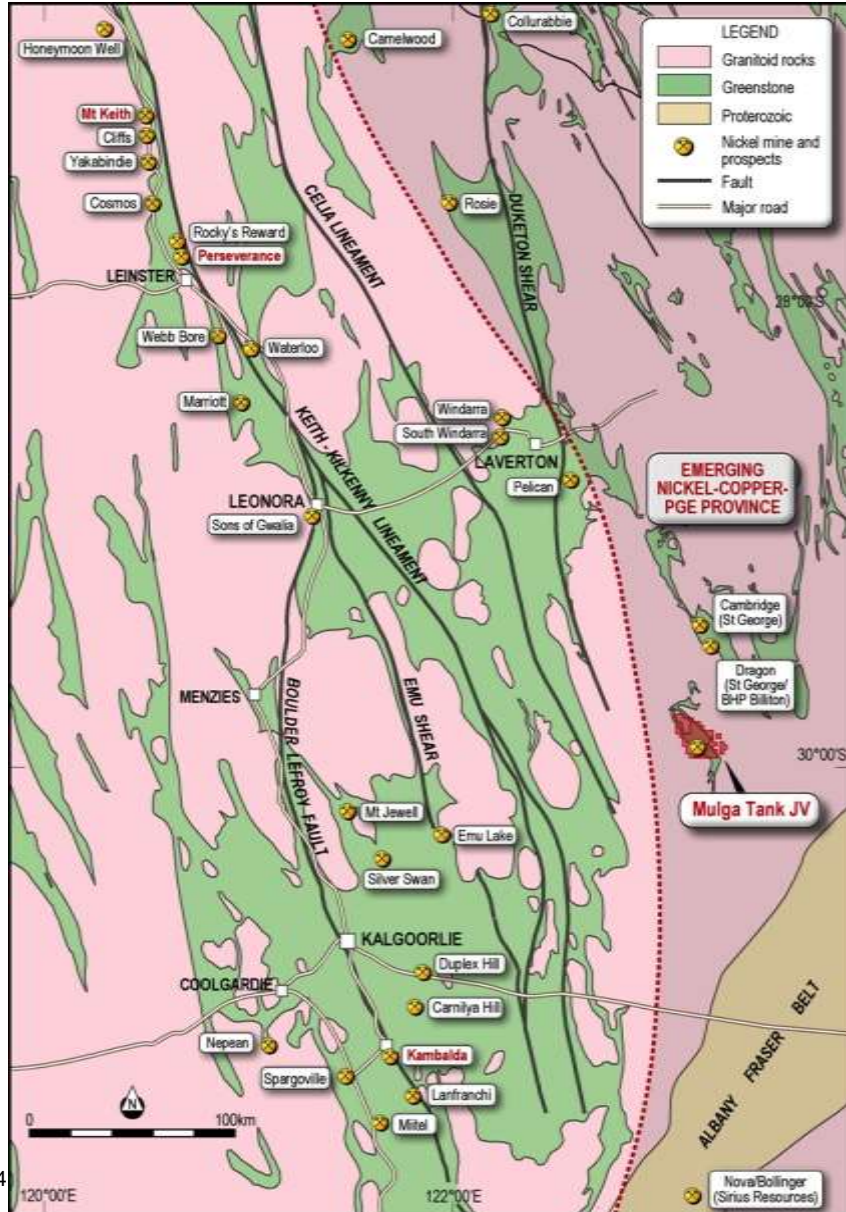
# **Mulga Tank Nickel-Copper-PGE Project Western Australia**

Impact 20% to 100% and earning 50% to 70%





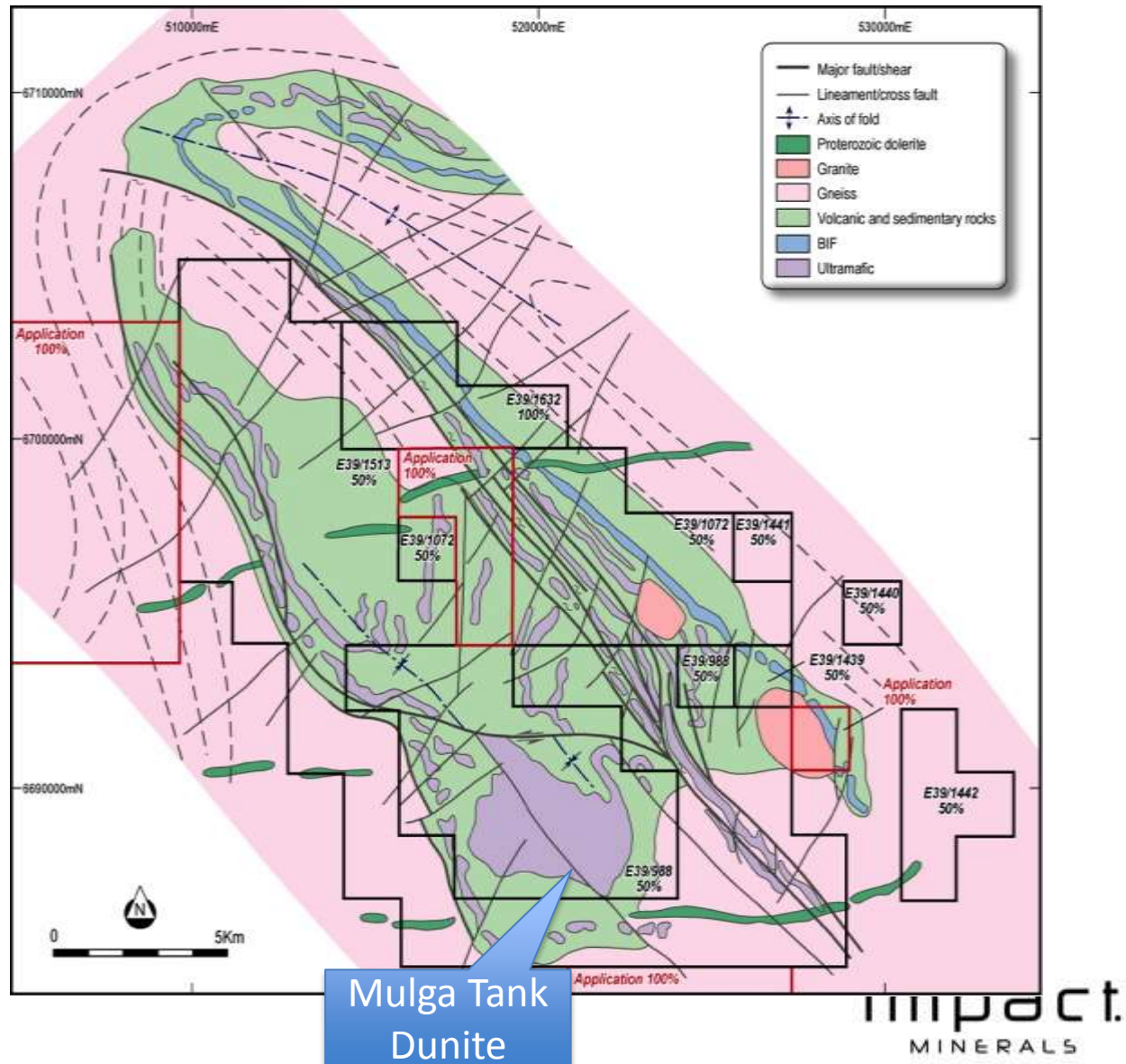
# Mulga Tank Project: Location



- Emerging WA nickel province
- Near to world class nickel mines:
  - Perseverance >1 Mt Ni metal
  - Mt Keith >2 Mt Ni metal
  - Kambalda camp >1 Mt metal
- Recent discoveries at
  - Nova-Bollinger deposit (0.5 Mt Ni Eq.)
  - Camelwood (Ni)
  - Collurabie (Ni-Cu-PGE)

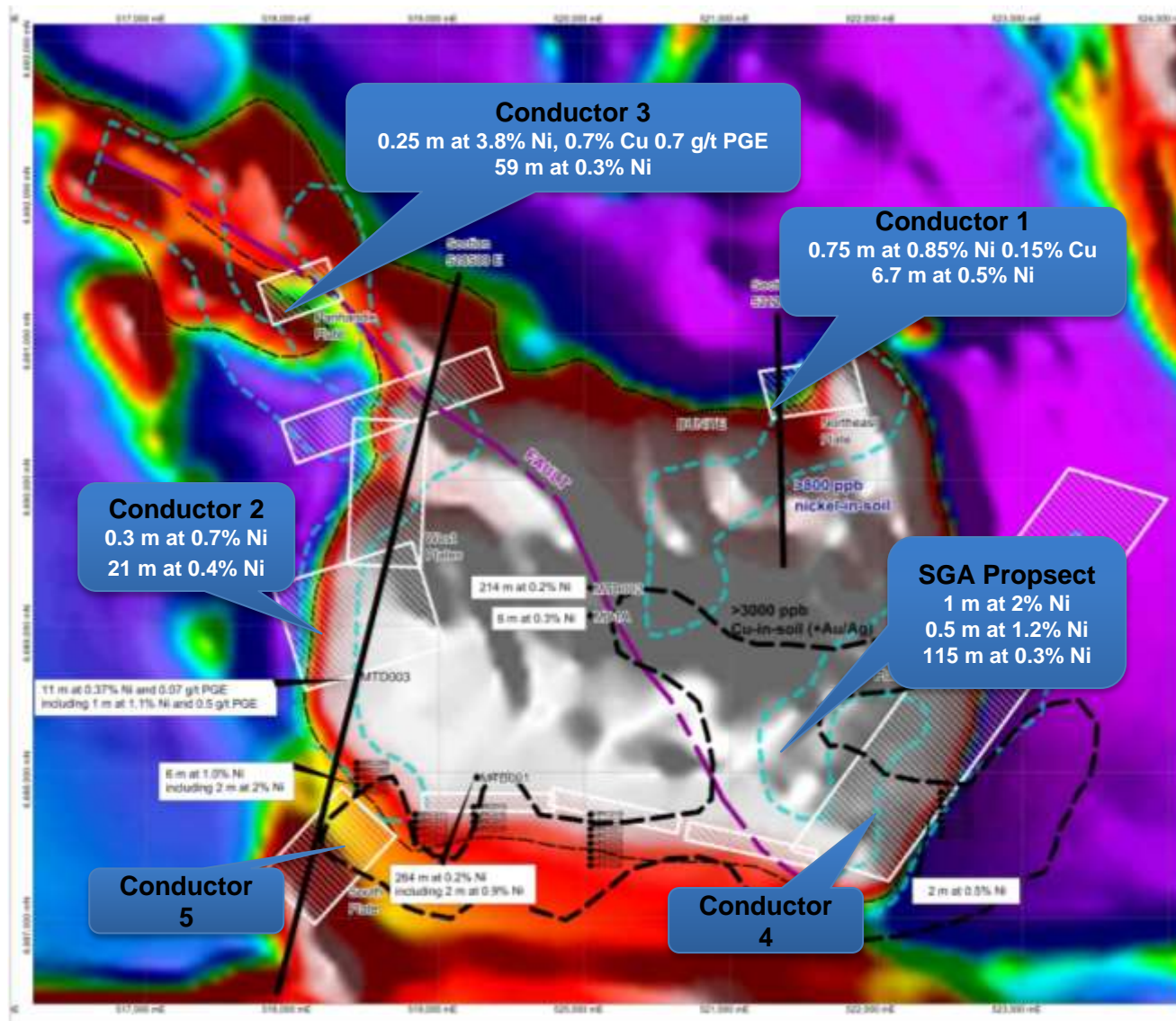
# Mulga Tank: A new nickel field?

- Very **poorly explored** greenstone belt
- Extensive sand cover has hindered exploration
- IPT's licences cover 425 sq km
- Significant **untapped gold potential**
- Work by Impact only focused on 15 sq km area over the Mulga Tank Dunite



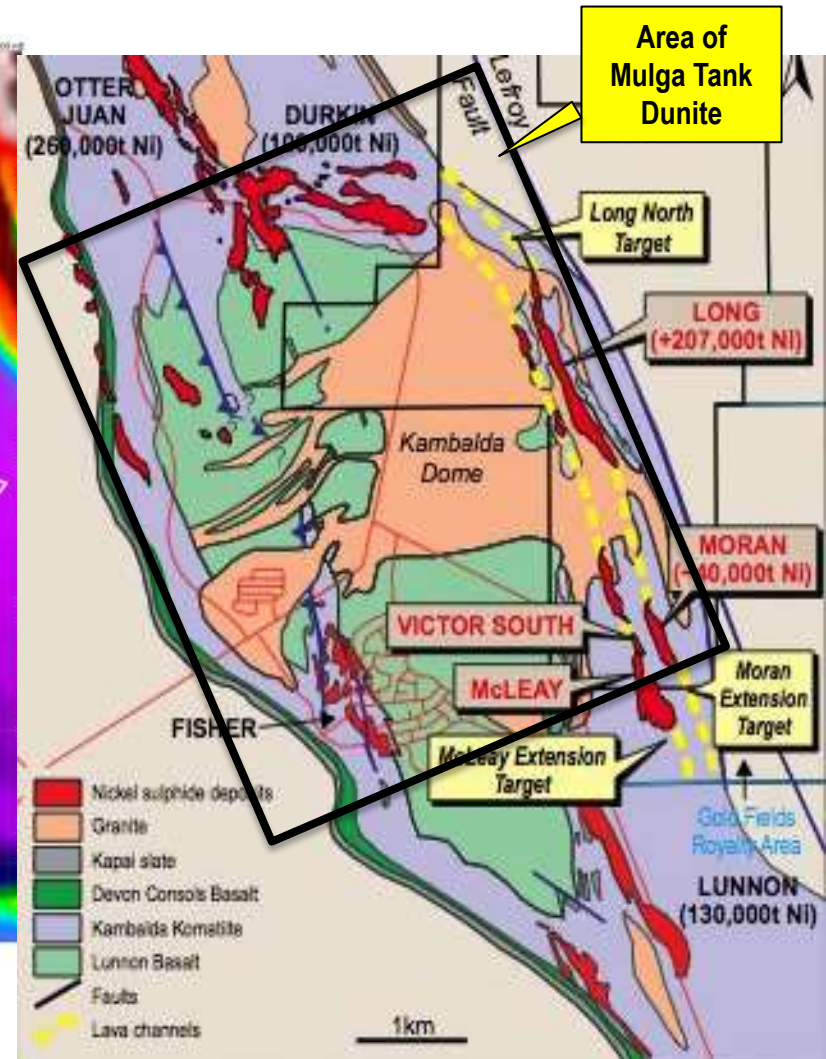
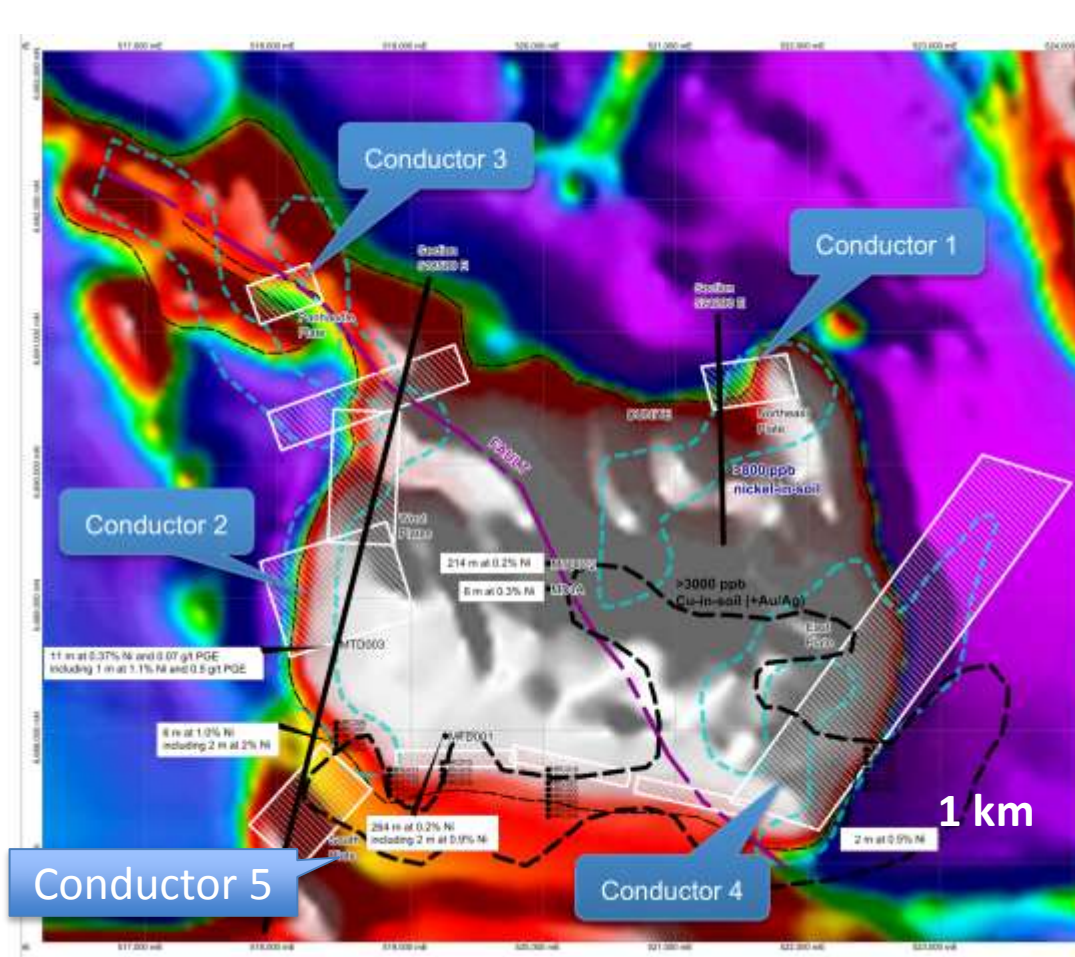


# Mulga Tank Dunite: IPT 2013 Drill Programme



- Six targets tested
- Three returned significant nickel-copper mineralisation
- Three styles of nickel mineralisation identified
- **Mineralisation extends over many sq km**

# A sense of scale and perspective!



Mulga Tank Dunite and the Kambalda Nickel Field (>2 million tonnes of contained nickel) at the same scale

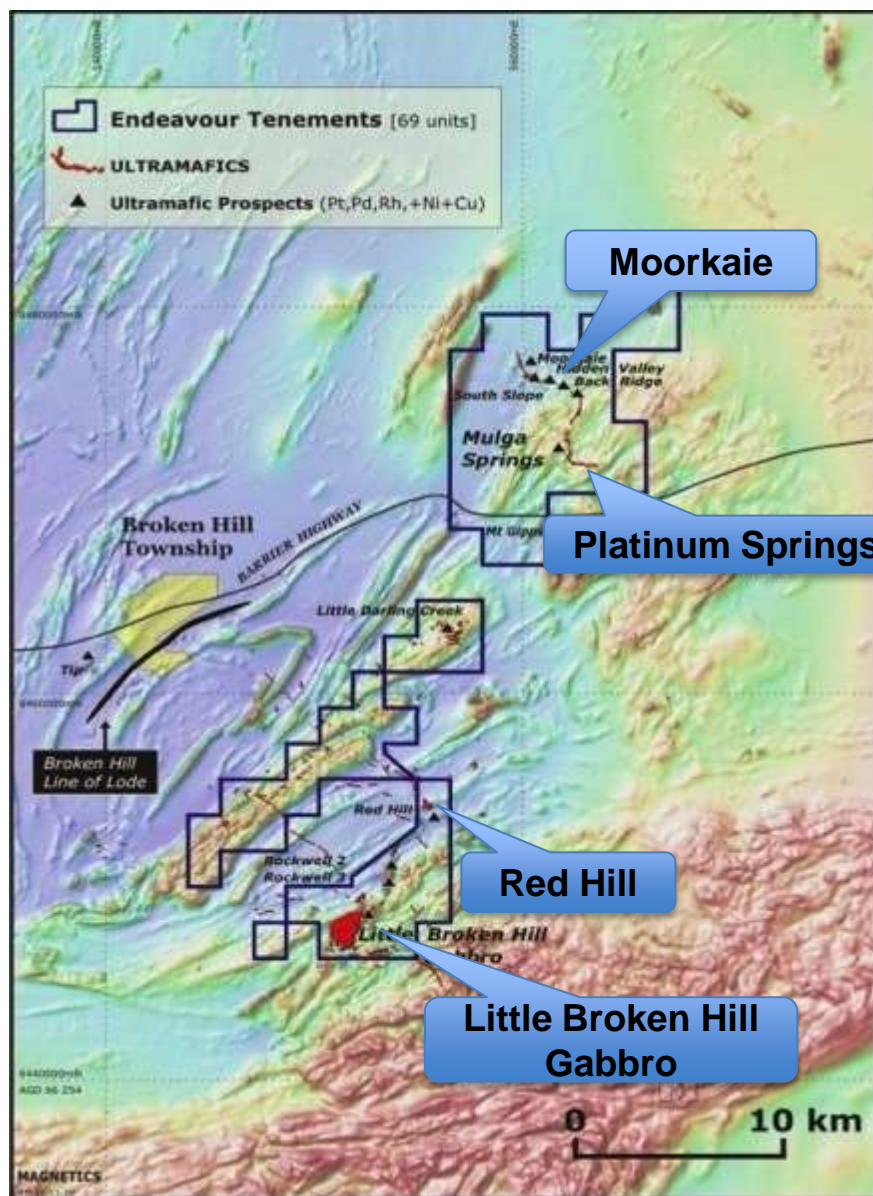




**Broken Hill  
Nickel-Copper-PGM  
Joint Venture Project  
New South Wales**

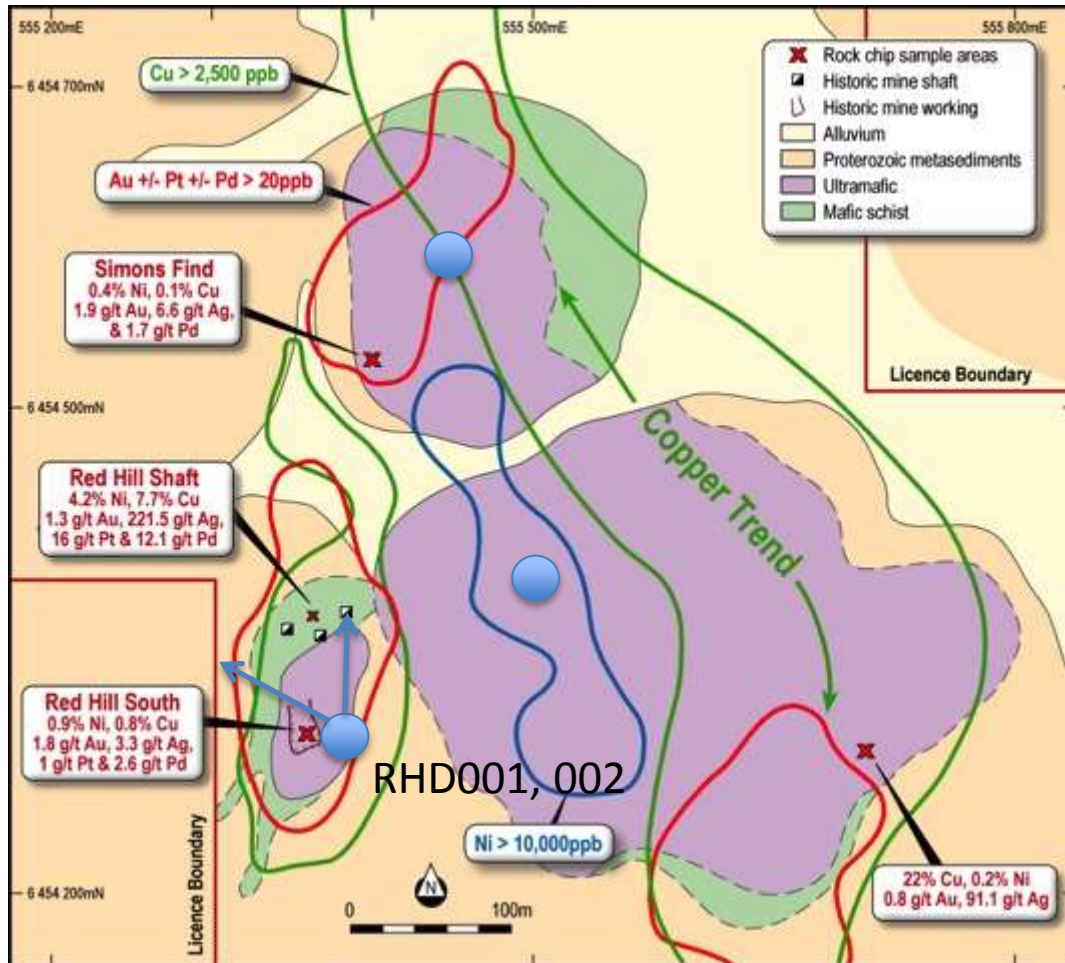
**Impact 51% and earning 80%**  
by spending \$200,000 to earn 80%

# Broken Hill Ni-Cu-PGE JV Project



- Located in the richly mineralised NSW Curnamona Province
- Mineralised mafic and ultramafic dykes and sills with high grade gossans over a 35 km belt
- Highest platinum grades in Australia
- **2 priority targets including:**
  - **Red Hill:** Eagle analogy: 5Mt @ 3.7%Ni and 3% Cu Possible early discovery I
  - **Platinum Springs:** drill intercept of 2 m at 10.9 g/t Pt, 23.6 g/t Pd, 6.12% Ni, 4.45% Cu
- Impact now 51% and earning 80% by spending a further \$200,000
- \$125,000 grant from NSW Govt.

# Red Hill Mine Prospect



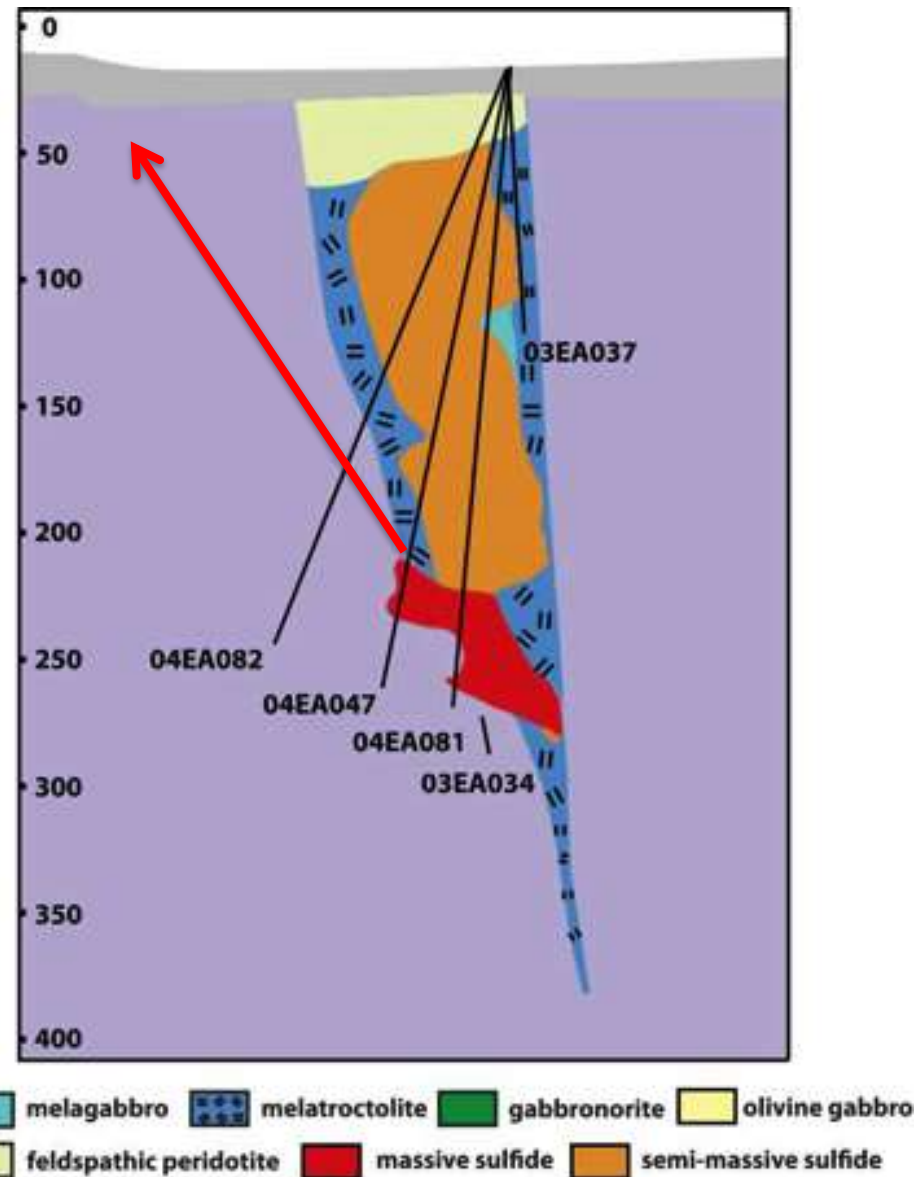
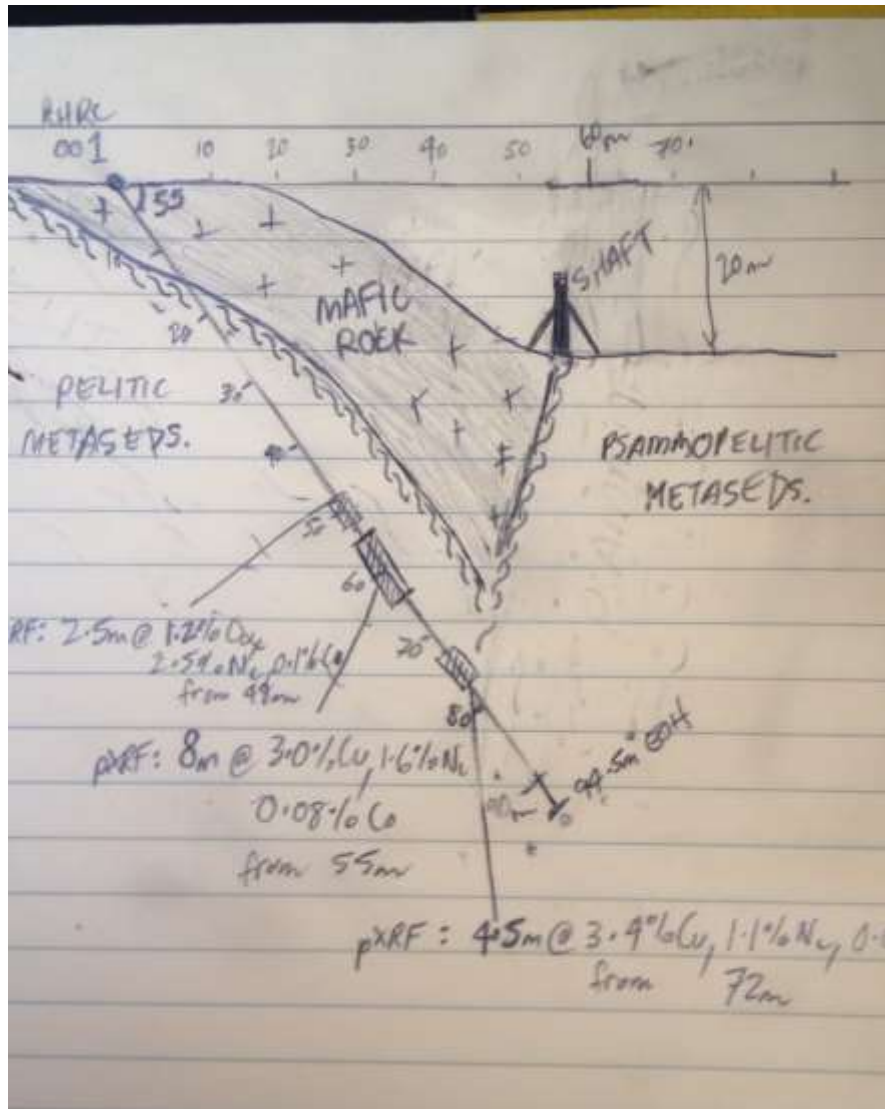
- Red Hill Mine active from 1906 to 1937
- About 500 t was mined
- Old mine records indicate face sample results of:
  - **2 to 4% copper**
  - **2 to 3% nickel**
  - **5 to 41 g/t platinum**
  - **22 to 70 g/t silver**
- **No drilling**
- Anomalous soil and rock chip samples: four priority targets
- Partly coincident with IP anomaly





Nickel and copper  
sulphide and oxide

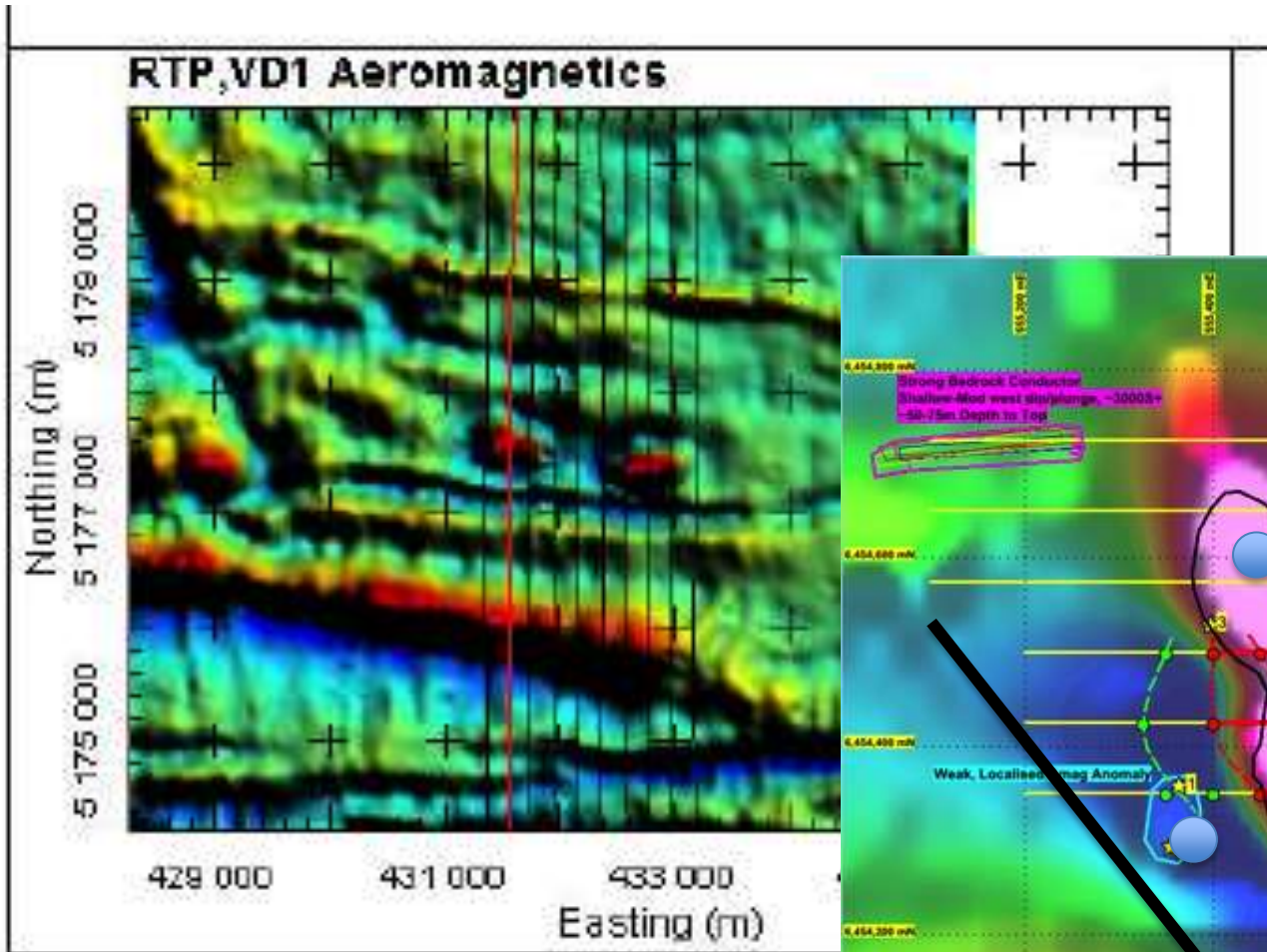
impact.  
MINERALS



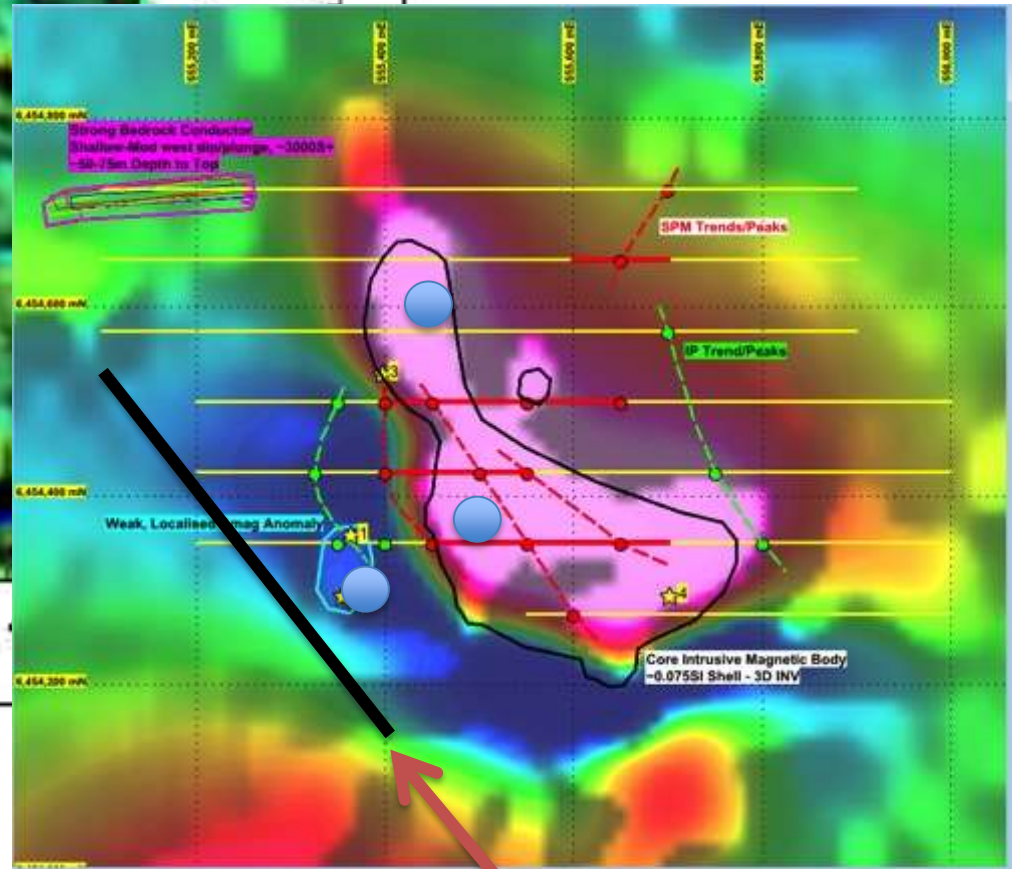
**Eagle: 5Mt at 3.7%Ni and 3%Cu**



# Red Hill: an Eagle Analogue?



Eagle intrusions



Red Hill

Size of Eagle Intrusion



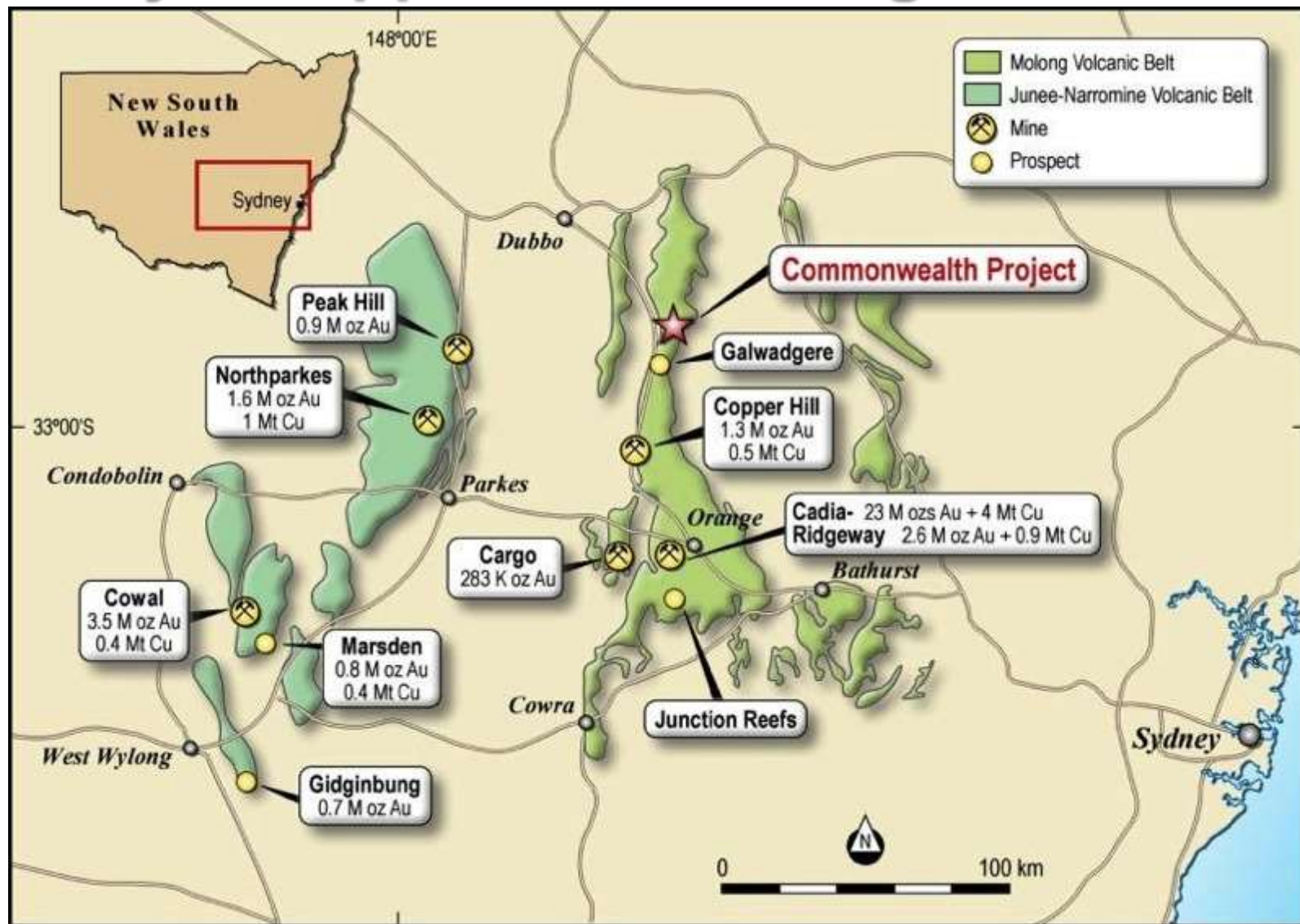
# impact.

MINERALS

**Commonwealth  
Gold-Silver-Base Metal Project  
New South Wales  
Impact 100%**

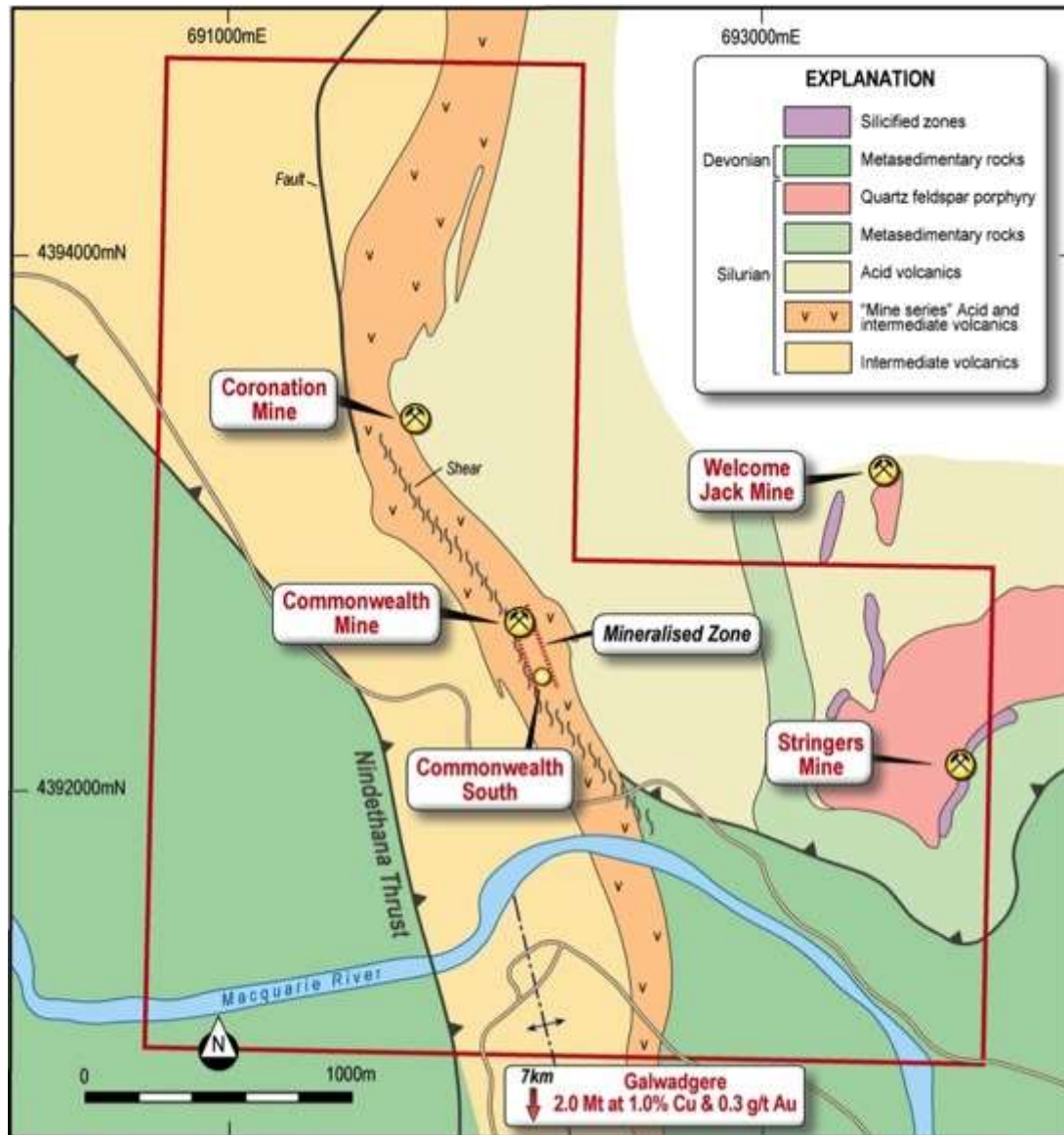


# Major Copper-Gold Mining Province





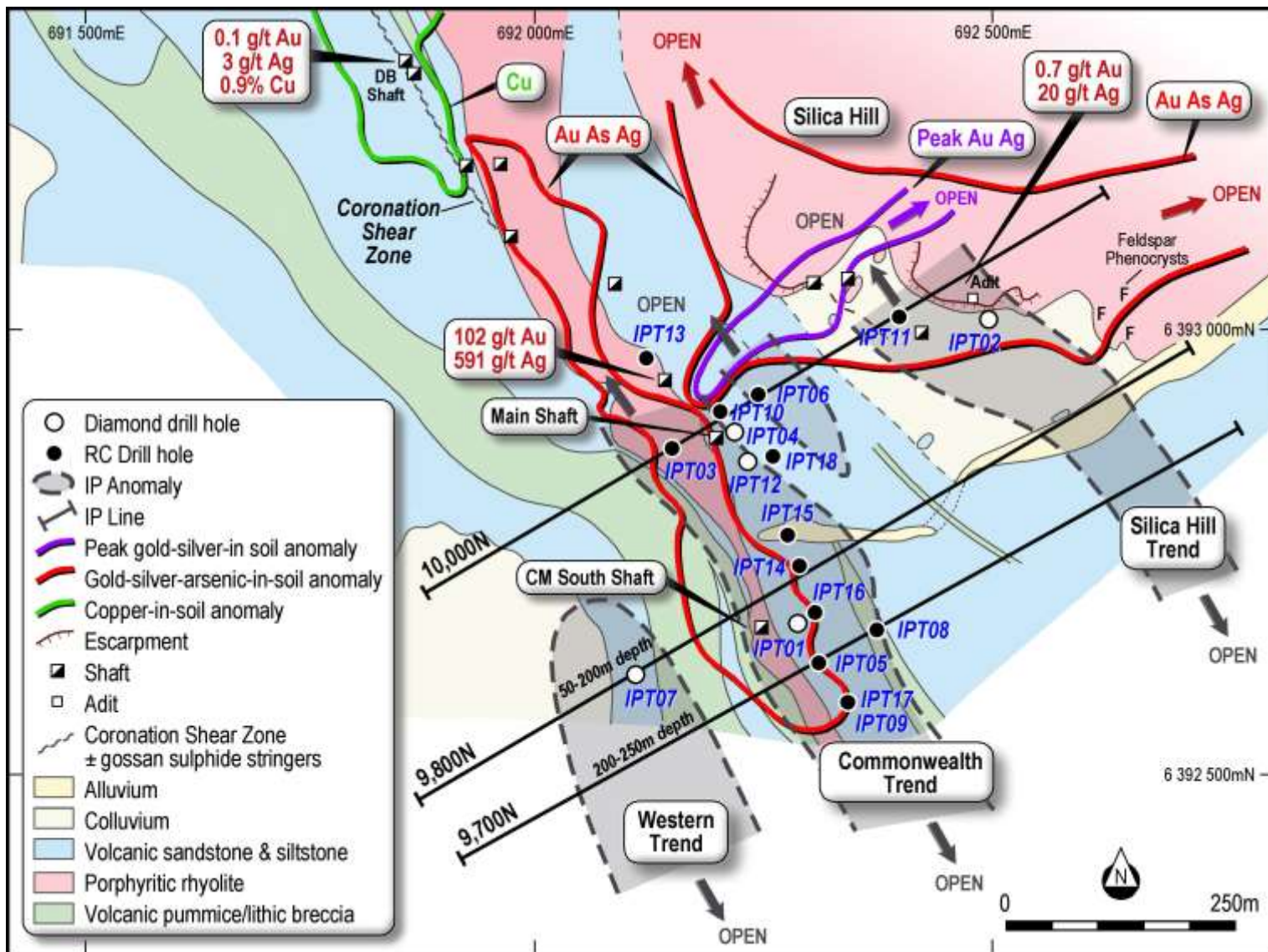
# Commonwealth Project: Previous Work



- Gold-rich Massive Sulphide Deposit
- Mined 1906-1930's  
**6500 t at 6 g/t Au, 150 g/t Ag, 2% Cu, 15% Zn & 7% Pb**
- Poorly explored:  
66 drill holes for an average depth of 53 metres.
- Previous exploration focus along 250 m strike at Commonwealth
- Acquisition in March 2013
- EL5874: 3-4 km strike potential



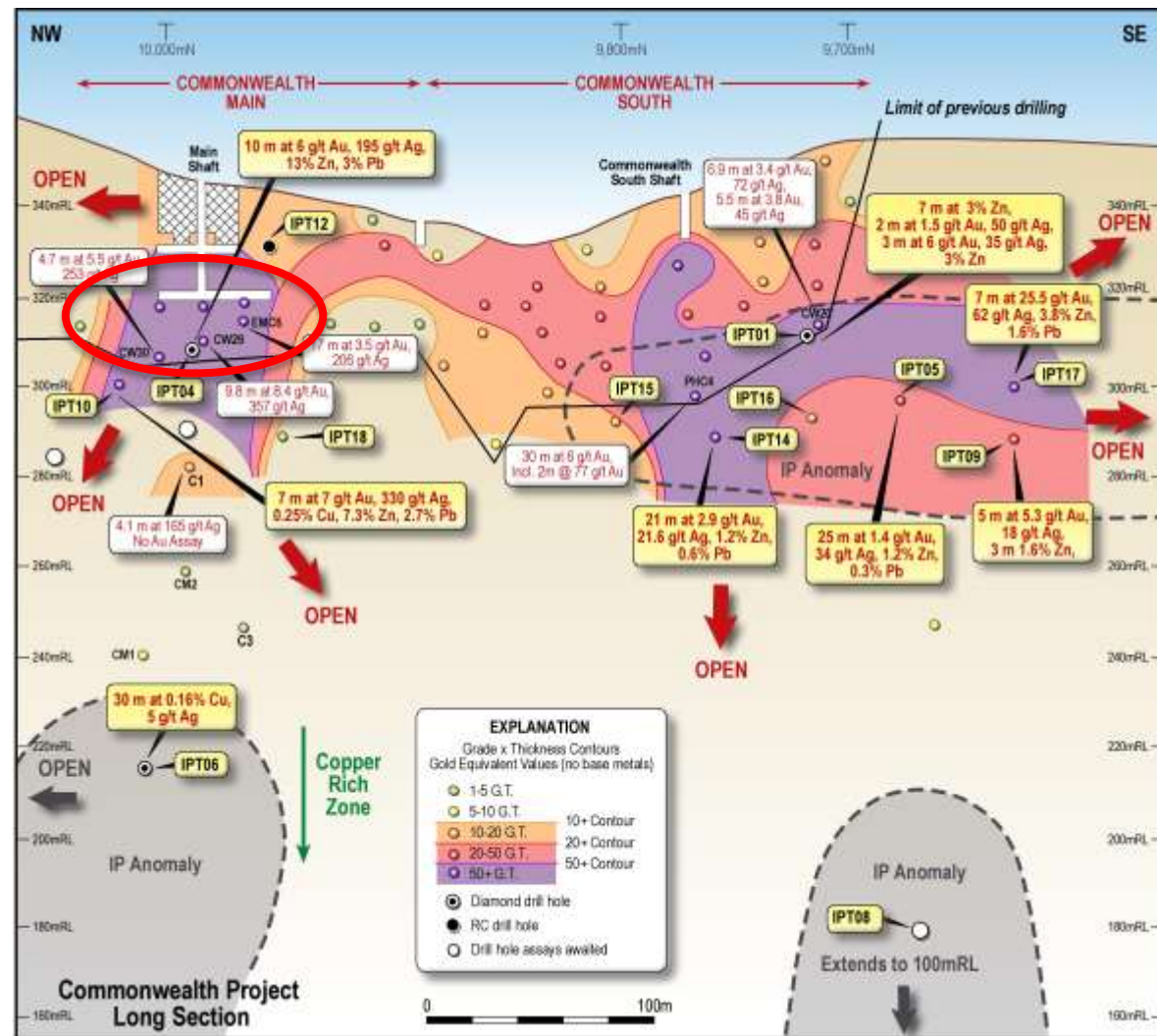
# Impact Work Programme 2013-2014



- IP Survey
- Soil geochemistry
- 21 drill holes for 3,600 m

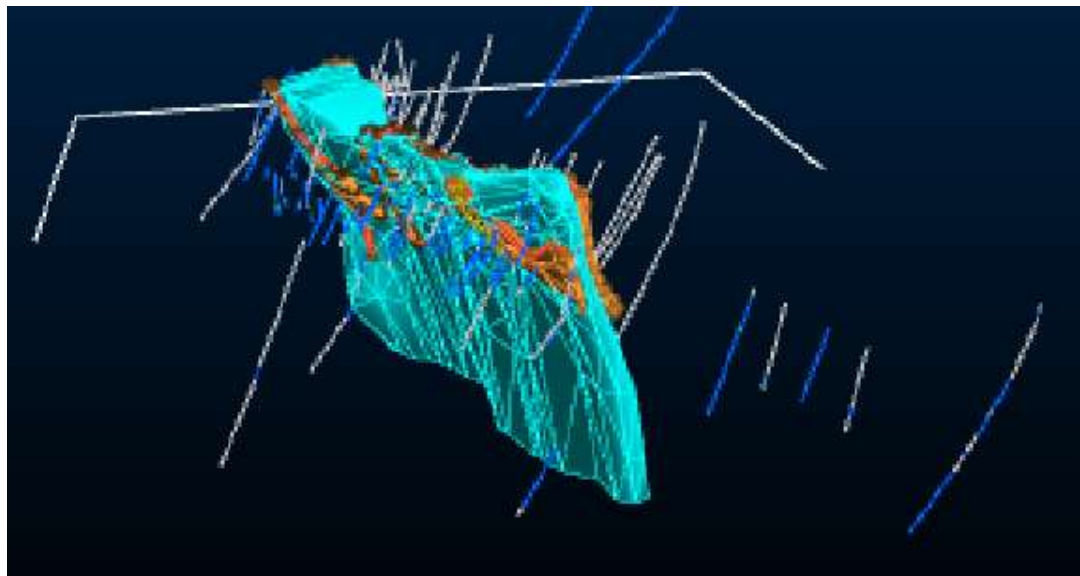
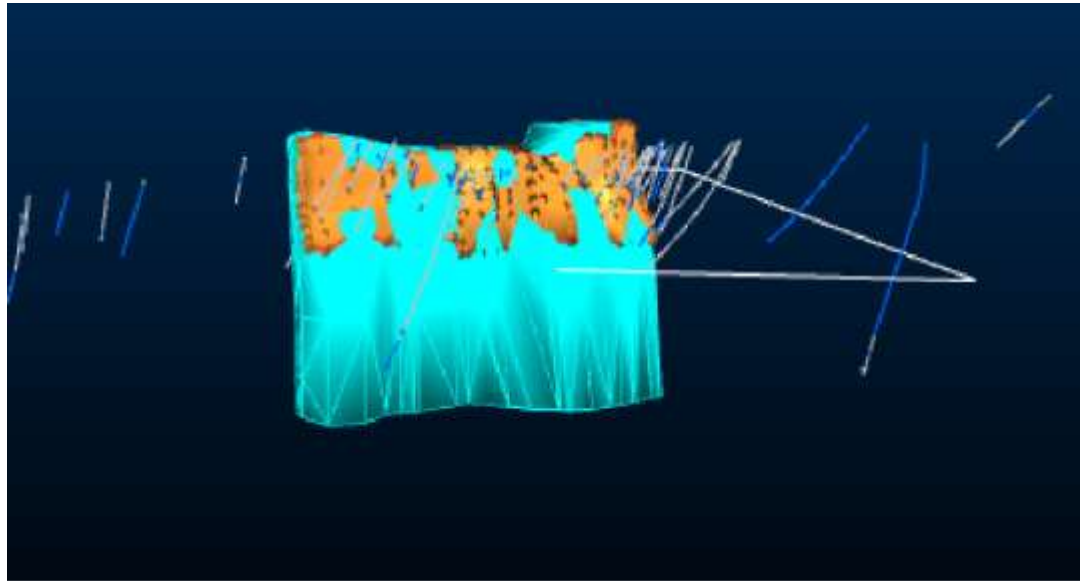
# Commonwealth: Potential at Depth

- Successful maiden drill programme completed in September 2014
- High grade gold-silver results open along strike and at depth at:
  - Main Shaft
  - 6 m at 7 g/t gold, 383 g/t silver, 8.5% zinc, 3.2% lead and 0.3% copper
  - Commonwealth South
  - 4 m at 41.8 g/t (1.3 ounces per tonne) gold, 93 g/t silver, 5.5% zinc, 2.3% lead
- 18 High value ore/tonne



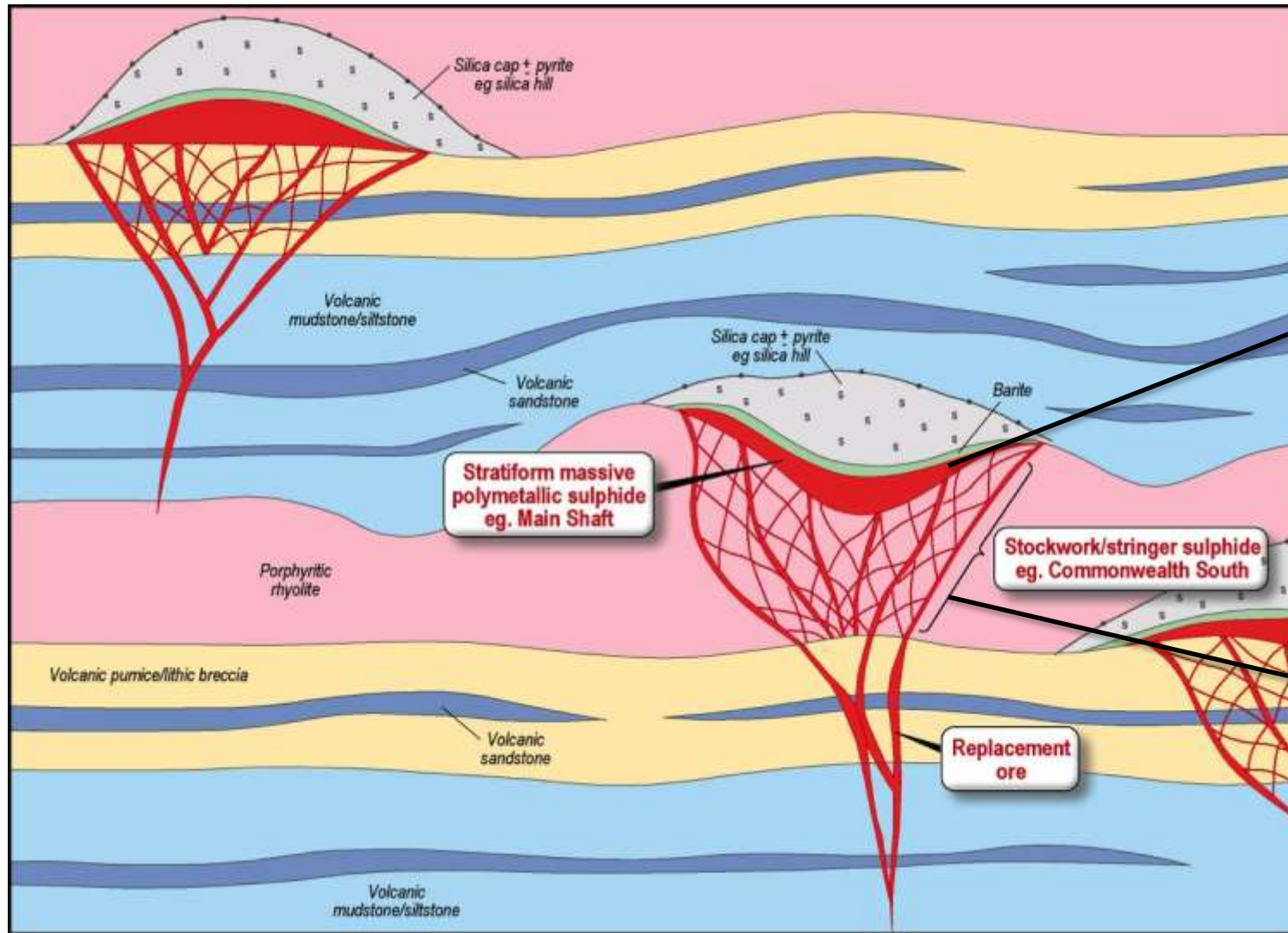
# 3D View of mineralisation

- Wireframe of the host rhyolite and mineralisation
- Massive sulphide on the hanging wall with disseminated and vein mineralisation in the footwall
- Resource calculation in progress



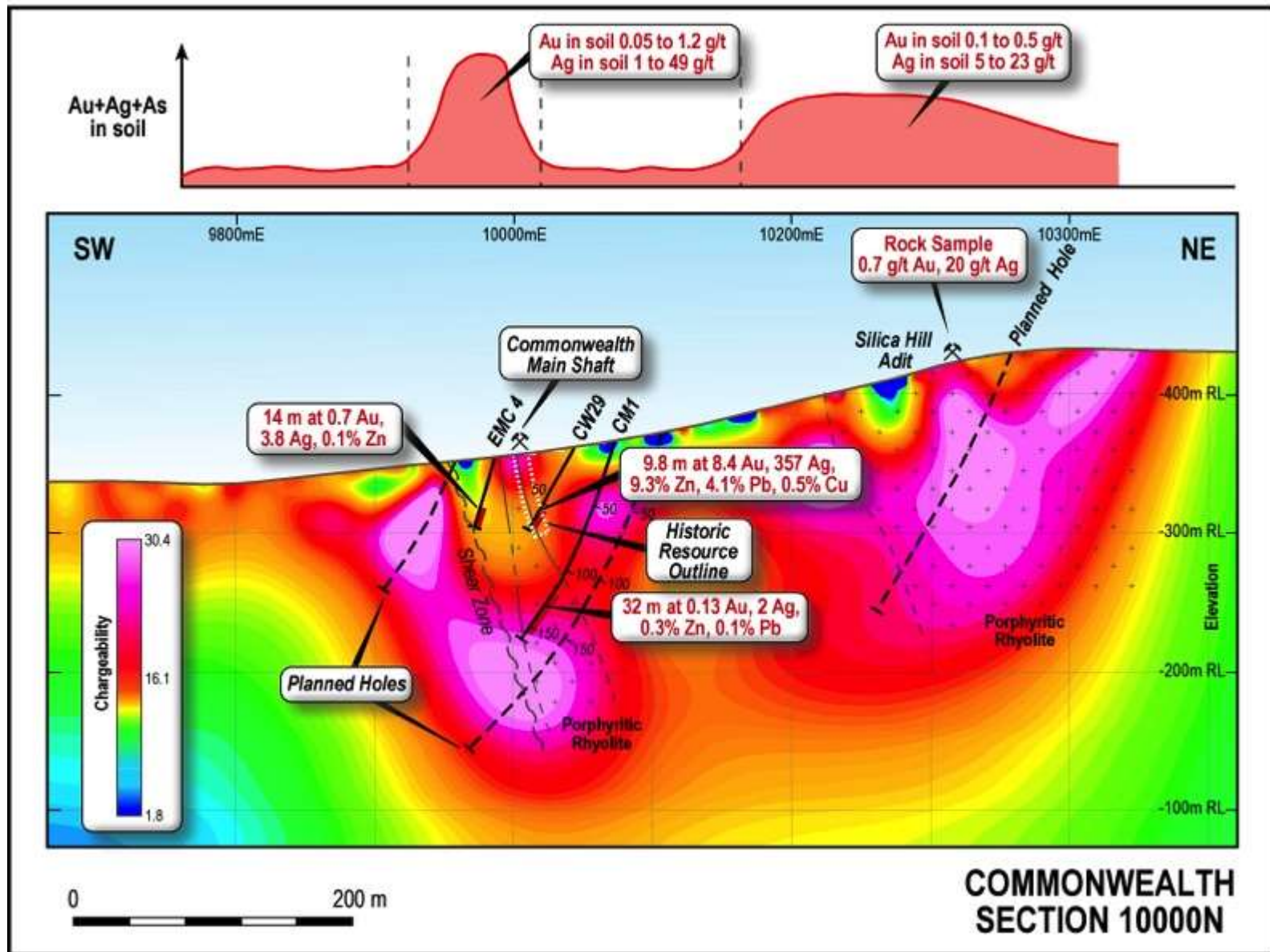


# Commonwealth: Deposit Model



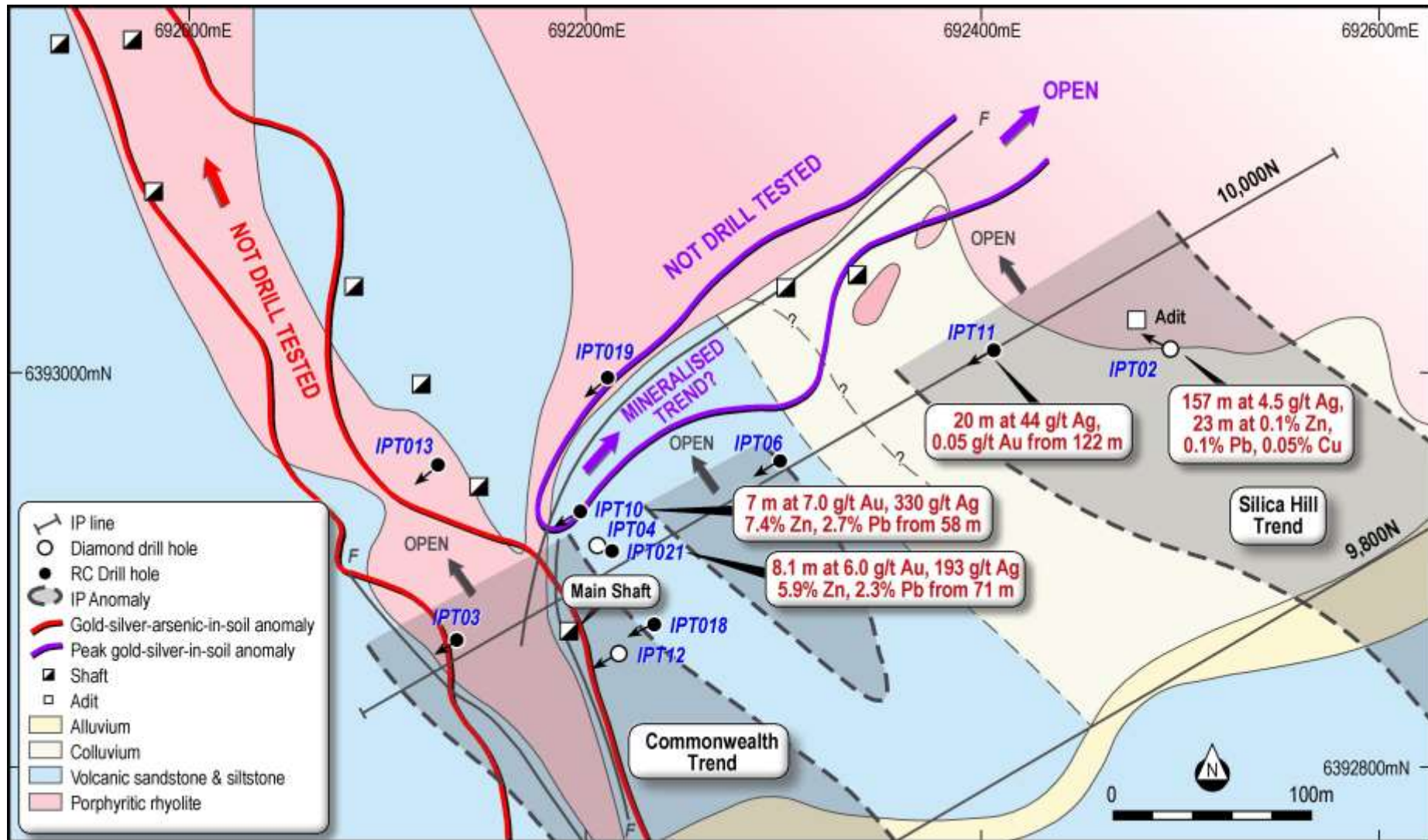
- Volcanogenic Massive Sulphide Model

# Ground IP Survey: Main Shaft and Silica Hill



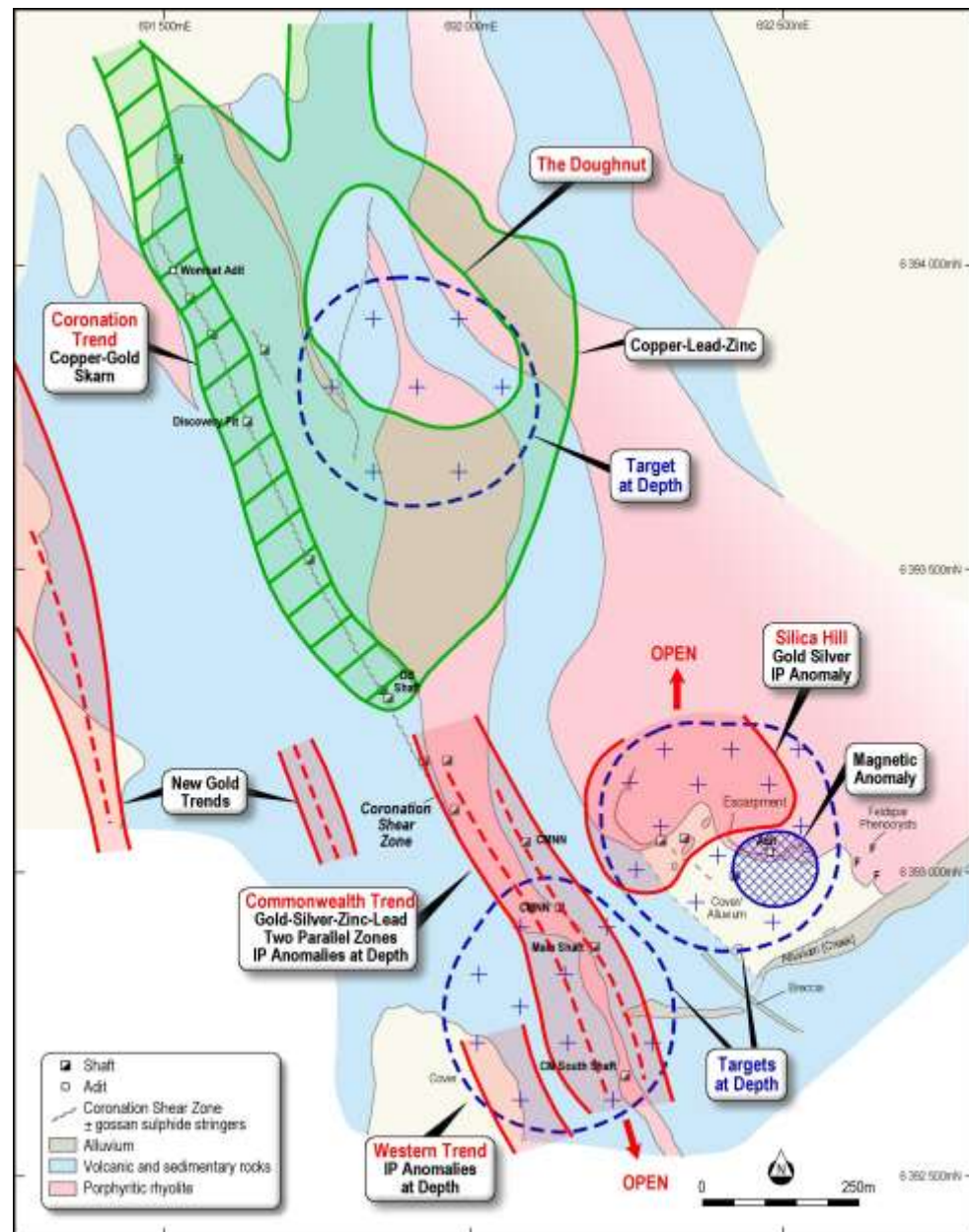


# What's hiding near Silica Hill?



# Commonwealth: Potential along strike

- Recent soil geochemistry results reveal potential for major mineralised system covering many sq. km.
- Recognition of metal-assemblages indicating
  - Porphyry & Skarn Cu-Au
  - High sulphidation Au-Ag-base metal
- Major breakthrough for Impact



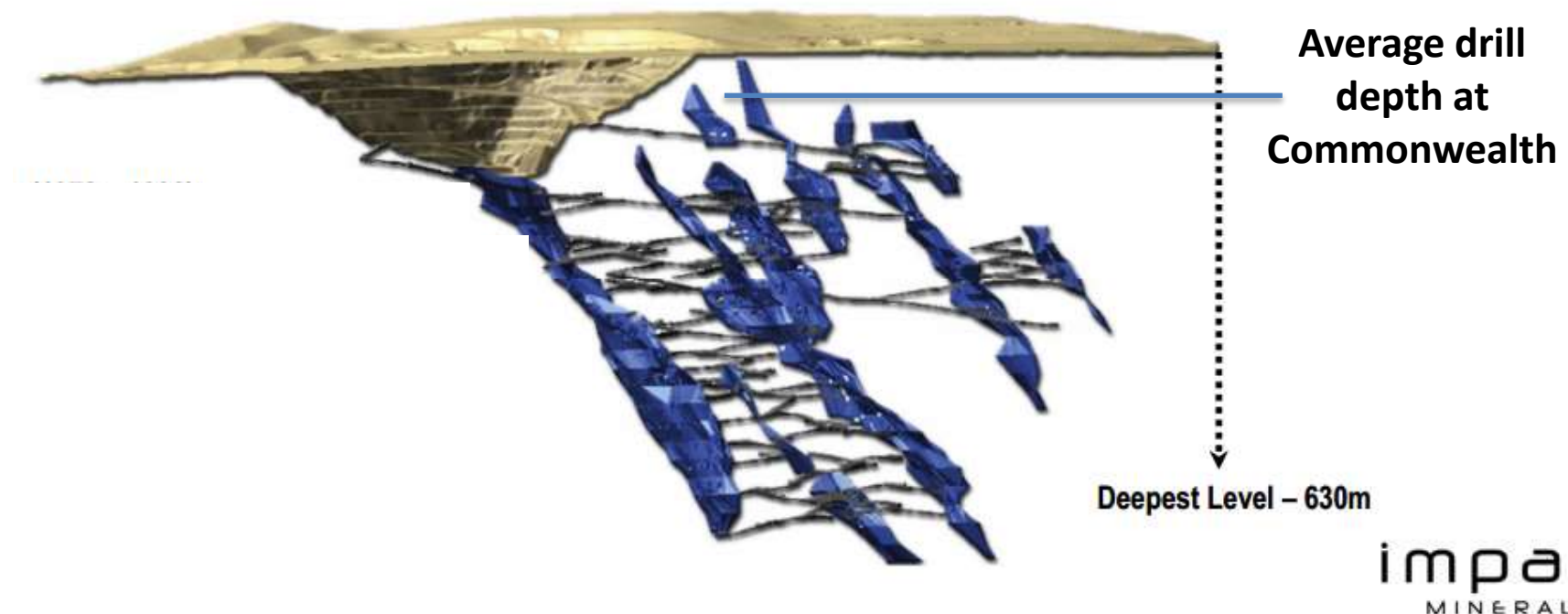


# Analogy: Woodlawn deposit (TriAusMin) Goulburn, NSW

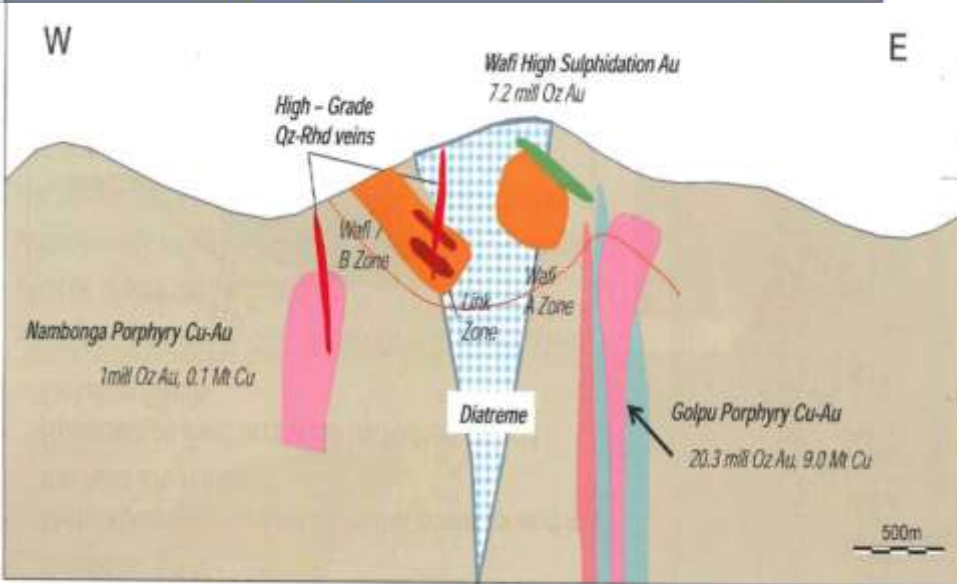
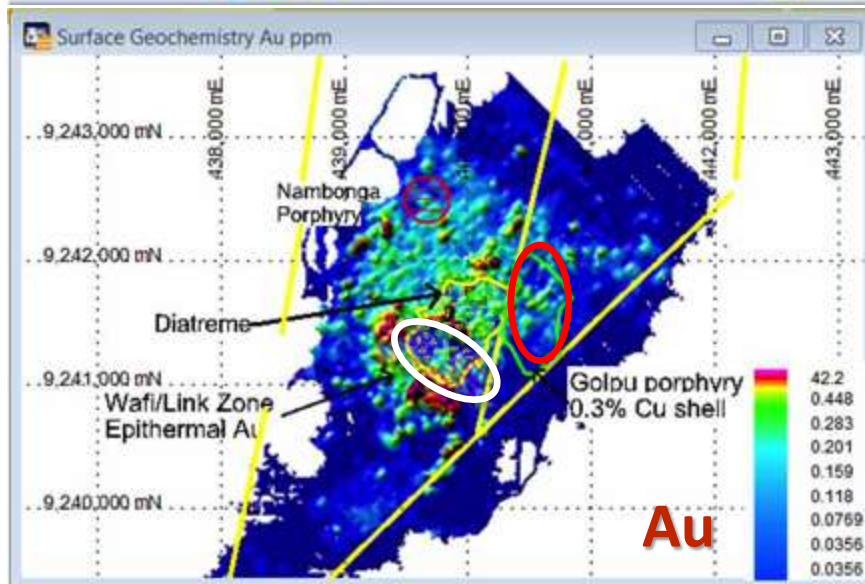
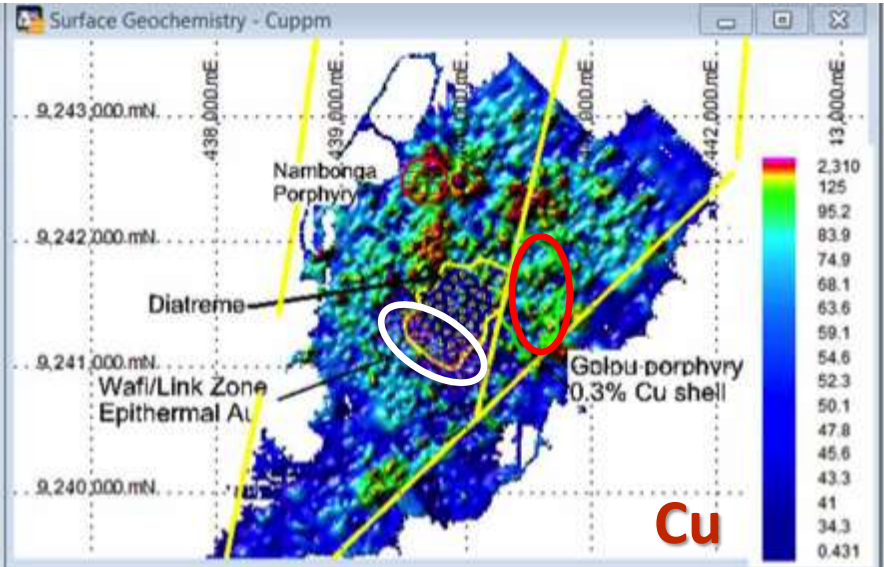
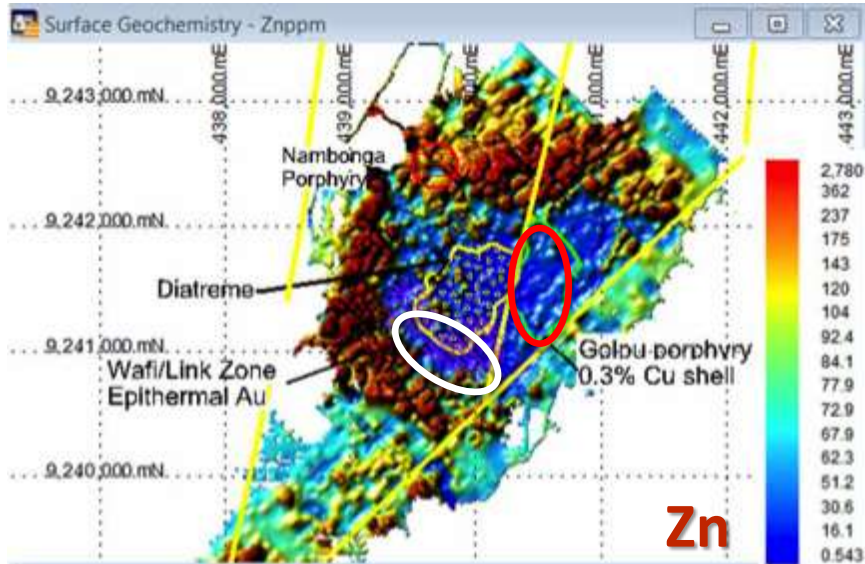
## Silurian VMS Deposit

17.7 Mt at 1.4 g/t gold, 80 g/t silver, 1.7% copper, 9.9% zinc, 3.8% lead  
for 7.1 million oz gold eq.

- 3.5 Moz gold equivalent underground resource and reserve
- Multiple lenses down to at least 630 m depth



# Wafi-Golpu Analogy (75 Moz Au eq)





# Commonwealth: Regional Potential

- Secured a further 315 sq km
- 8 km strike potential rocks that host Commonwealth
- 10 km strike potential of structures that host Galwagdere deposit :  
**(2 Mt at 1.0% Cu and 0.3 g/t Au)**
- Additional historic copper-gold workings
- Close to recent blind porphyry discovery at Kaiser-MacGregor by Alkane Resources Ltd  
**41 m at 1.2% Cu and 1.1 g/t Au from 18 m**  
**32 m at 0.4% Cu and 0.1 g/t Au from 109 m**



# Commonwealth: Next Steps

- Inferred Resource Statement: November
- Infill and Extend IP surveys over Commonwealth and Silica Hill: In progress
- IP Survey over the Doughnut: November
- Focus on Silica Hill: soil geochemistry and ground geophysics
- Follow up drill programme: Q1-Q2 2014