

impact.

MINERALS

**One of 7 companies selected globally
out of 249 to be the first cohort
of the BHP Xplor Programme¹**



Winning aspiration

Where to play

How to win

Capabilities

Management systems

Welcome

We scoured the globe for the next generation of explorers that are ready to think about the earth's minerals systems **differently**

Xplor was born out of a need for BHP to unlock previously untapped copper, nickel and other mineral deposits critical to driving the energy transition. We are dedicated to investing in the next generation of innovative, early-stage mining start-ups that will be key to solving tomorrow's most pressing energy problems.

- A premier development program
- An opportunity for future investment
- Long term partnerships



BHP Xplor

Congratulations



What We Can Achieve Together



Collaboration & Community

Connect with your peers who are amongst the world's most promising early stage explorers, share learning & insights along the journey



Development & mentorship

Access a world-class development program to set you up for success. Be guided on your journey by industry leading mentors from BHP & the global mining community



Rapid Acceleration

Engage in a structured learning curriculum designed to fast track your organisation, with upskilling on critical technical, operational and business capabilities



Access to the BHP network

Meet leaders from BHP and access our external ecosystem of vendors and suppliers



Funding & Partnership Opportunities

Support to pitch to BHP for future funding or partnership opportunities



Long term connections

Opportunity to build out a long-term relationship with BHP, beyond the 6-month Xplor program

BHP Xplor

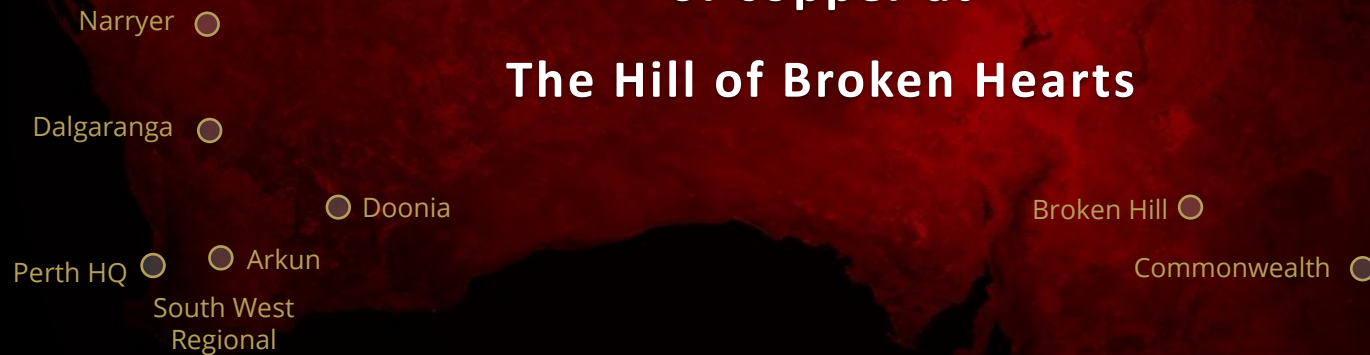
impact.

MINERALS

What if....

There was up to 100Mt or more
of copper at

The Hill of Broken Hearts



Winning aspiration

Where to play

How to win

Capabilities

Management systems

WE BELIEVE THAT:

- a) the Broken Hill region is very poorly explored and more orebodies are present at depth;
- b) this is because junior companies have dominated exploration for nearly 30 years and all have run out of time and money before being successful;
- c) structural complexity, lies at the heart of the exploration problem; and
- d) Broken Hill is one of the lowest risk areas in the world to work.

THE XPLOR SOLUTION: we have two straight forward IDEAS to help mend the Broken Heart:

- Idea 1. Field evidence to support a new mafic magmatic-hydrothermal model for BH that implies up to >100MT of copper may have been in the mafic intrusive system and which is waiting to be found.
- Idea 2. New search spaces for this copper can be identified based on a vastly underutilised structural breakthrough and a BFO* by Tony Crawford. This involves tracking the mafic rocks and associated alteration in 3D via magnetic (and other) data, together with field mapping with a hand held XRF.

OUTCOMES:

- 1) New target areas or search spaces for copper.
- 2) Secondary targets for Broken Hill-style mineralisation.
- 3) A new detailed 3D map of the southern Broken Hill area and associated structural history.

Winning aspiration

Where to play

How to win

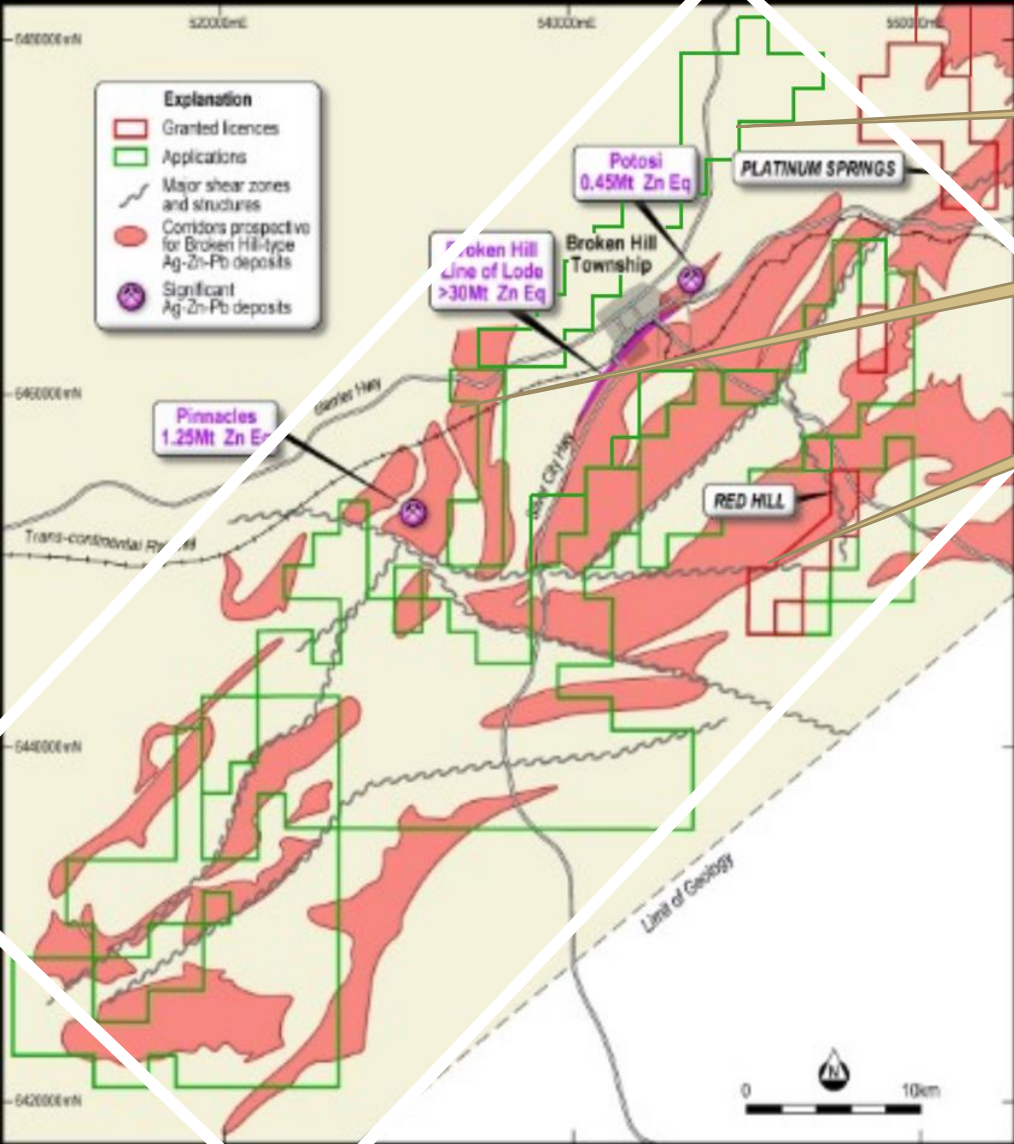
Capabilities

Management systems

The Search Space

Area defined by reprocessing of seismic data: evidence of basin inversion

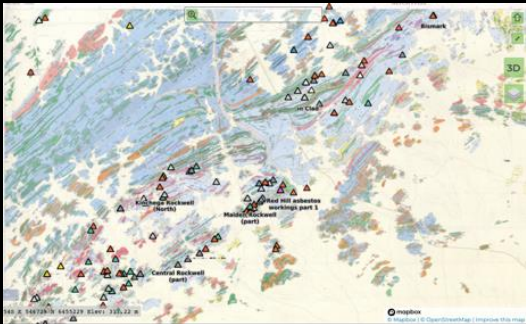
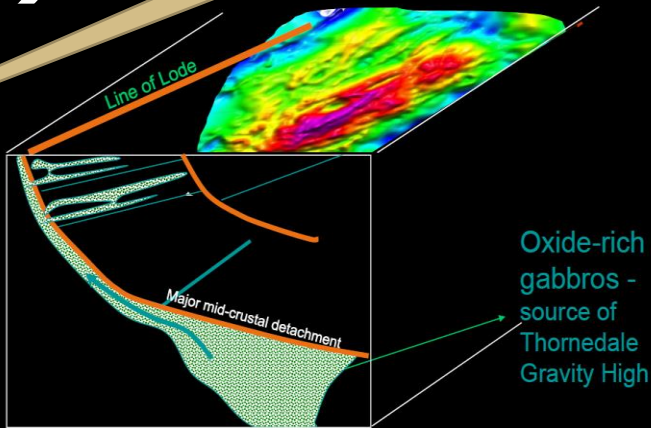
Three priority areas



Paragon Deeps

Thorndale Gravity High

Little Broken Hill



Winning aspiration

Where to play

How to win

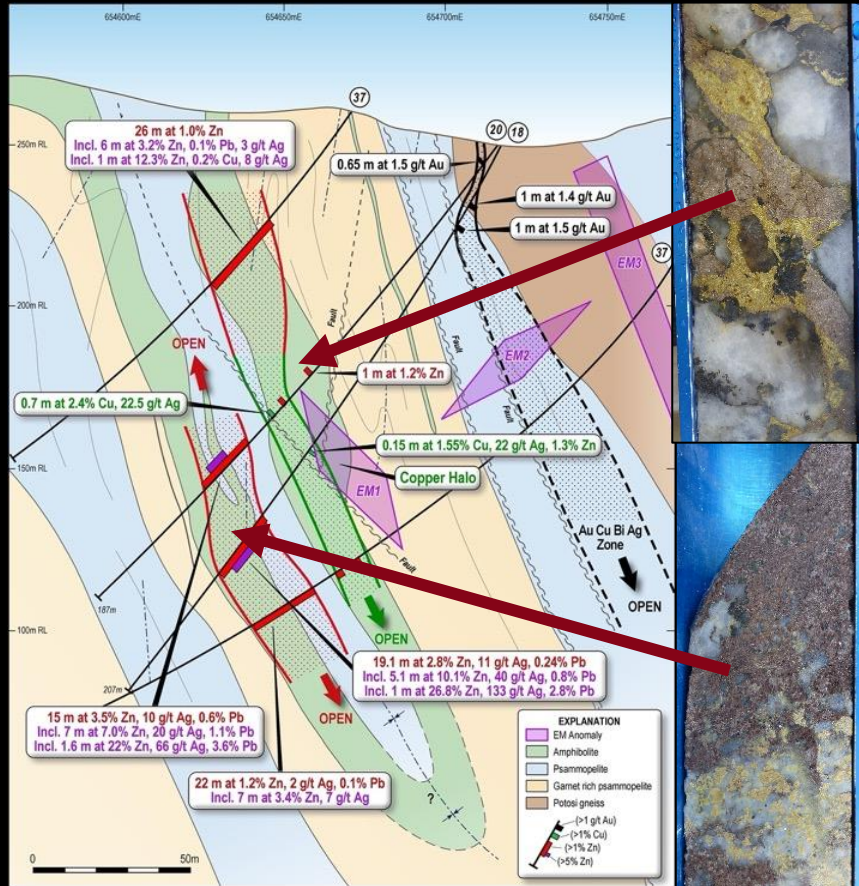
Capabilities

Management systems

Dora East: It all comes together²

(Ask us what this looks like unfolded and how it compares to Broken Hill!)

High grade Cu-Ag-Zn associated with Zn-Pb-Ag



Is this the actual Broken Hill Line of Lode?

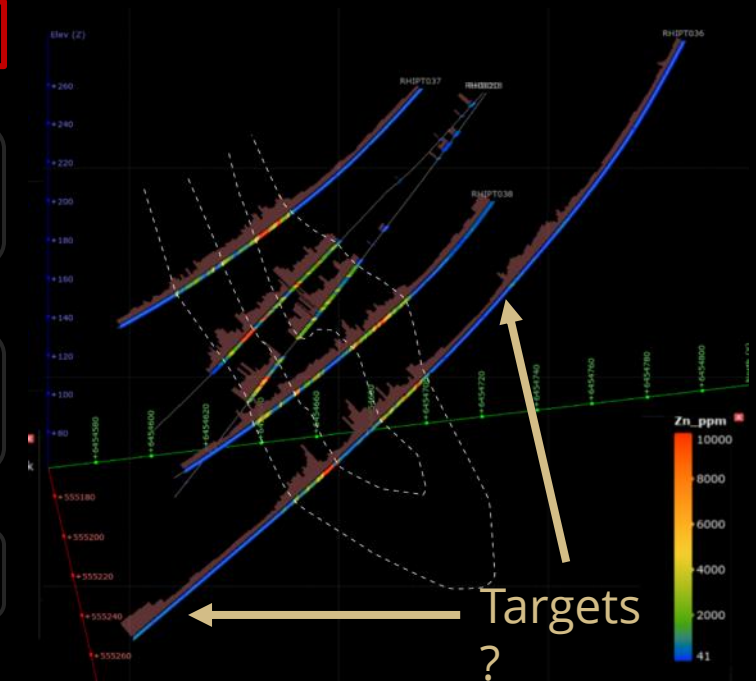
THIS IS THE XPLOR TARGET

THIS IS THE SECONDARY TARGET

IS THIS A POTOBELITE?



Mn/Fe ratios define the alteration halo



Mn/Fe ratio increases across the amphibolite sill. This can be measured with a hand held XRF and possibly mapped by satellite data

Winning aspiration

Where to play

How to win

Capabilities

Management systems

Team Impact



Dr Mike Jones

Managing Director and Chief Geologist

- BSc and PhD in Structural and Exploration Geology, Imperial College
- 35 years experience: WMC Resources; Exploration consultant in a wide variety of mineralised terrains
- Founding Director of Impact Minerals
- <https://www.linkedin.com/in/mike-jones-48831615/>



Mr James Cumming

Exploration Manager

- BSc Hons, Geology, Pretoria 2009
- 11 years exploration experience at Impact
- <https://www.linkedin.com/in/james-cumming-0a445a26/>



Mr Martin Neumann

Senior Geologist

- First class BSc (UCL) and also MSc, Camborne 2019
- Special interest in the chemistry of layered mafic intrusions
- <https://www.linkedin.com/in/martin-neumann-b1092912a/>



Mr Harry Sheingold-Bane

Project geologist

- BSc in Exploration Geology, Cardiff, UK, 2021
- <https://www.linkedin.com/in/harry-sb/>



Mr George Martin-Johnson

Senior Geologist

- MSci Geology, Southampton 2018
- Regional to prospect scale geochemical and geophysical integration and target generation
- <https://www.linkedin.com/in/george-martin-johnson-834a24b3/>



Mr Frank Bierlein

Consultant and non-exec Director of Impact

- 30+ years of experience in grass roots to mine-stage exploration and geological research
- Extensive publications in mineral prospectivity analysis and metallogenic framework studies including Broken Hill
- <https://www.linkedin.com/in/frank-bierlein-06039713/>



Prof Tony Crawford

- 30 Consultant years at CODES at the University of Tasmania
- World-respected academic in petrology, geochemistry and tectonic setting in diverse modern and ancient igneous rocks
- <https://www.linkedin.com/in/tony-crawford-34985536>

Winning aspiration

Where to play

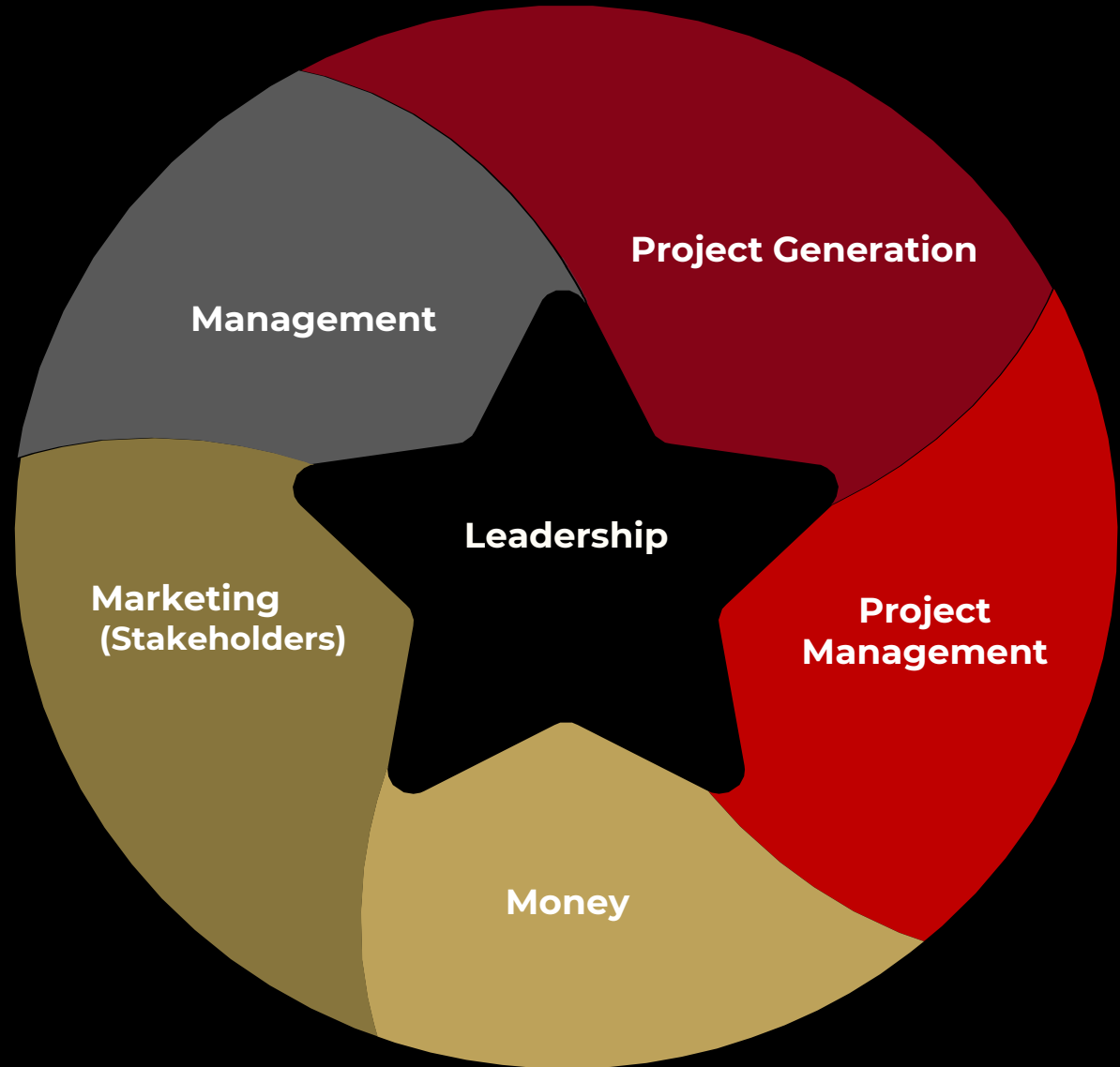
How to win

Capabilities

Management systems

A Business is Defined by its Systems

Broken Hill
One of the lowest risk places to work in the world



Winning aspiration

Where to play

How to win

Capabilities

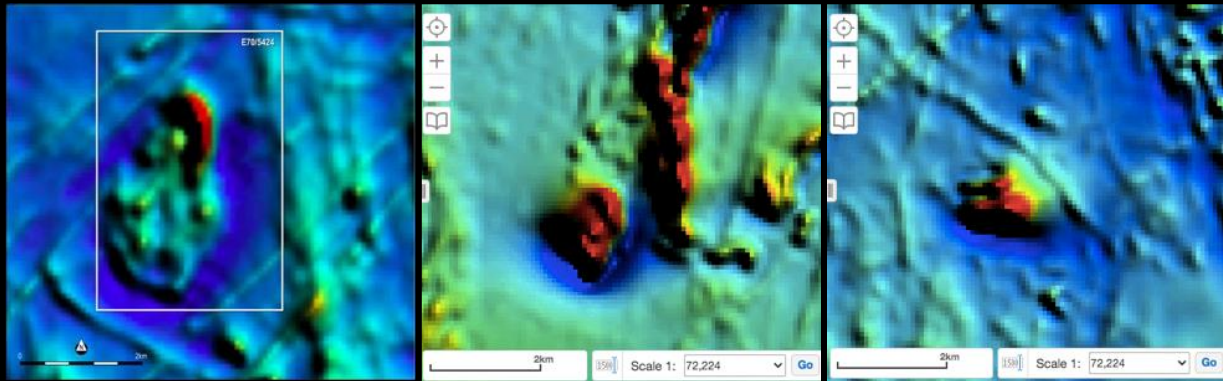
Management systems

Building a battery metals fortress in WA³



- 10 projects: 4,000 sq km: 18 months
- Arkun-Beau-Dinninup 100%
- JVs 80%-20% free carried to DtM

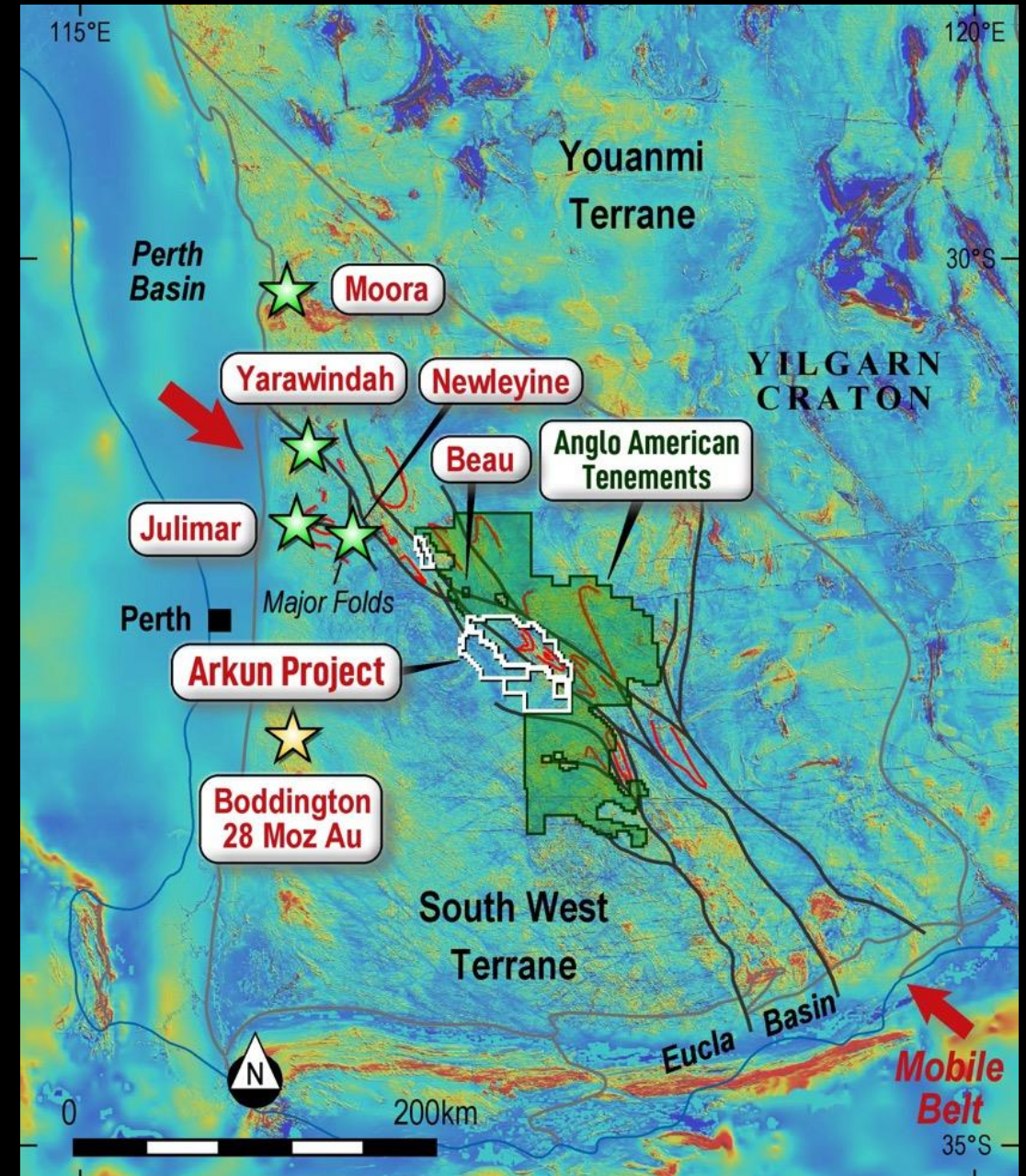
Arkun Project³ Emerging Ni-Cu PGM-Au mineral province of SW Western Australia



Beau

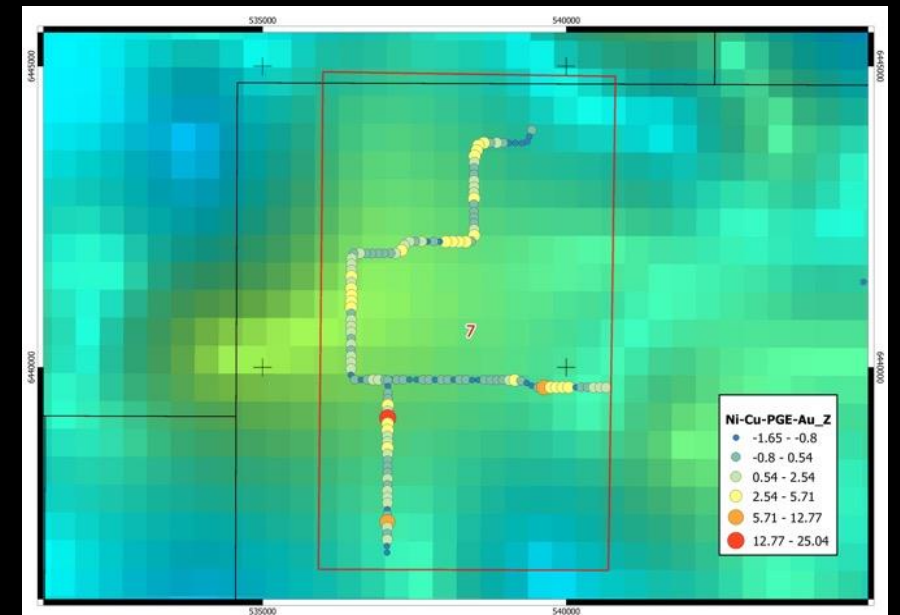
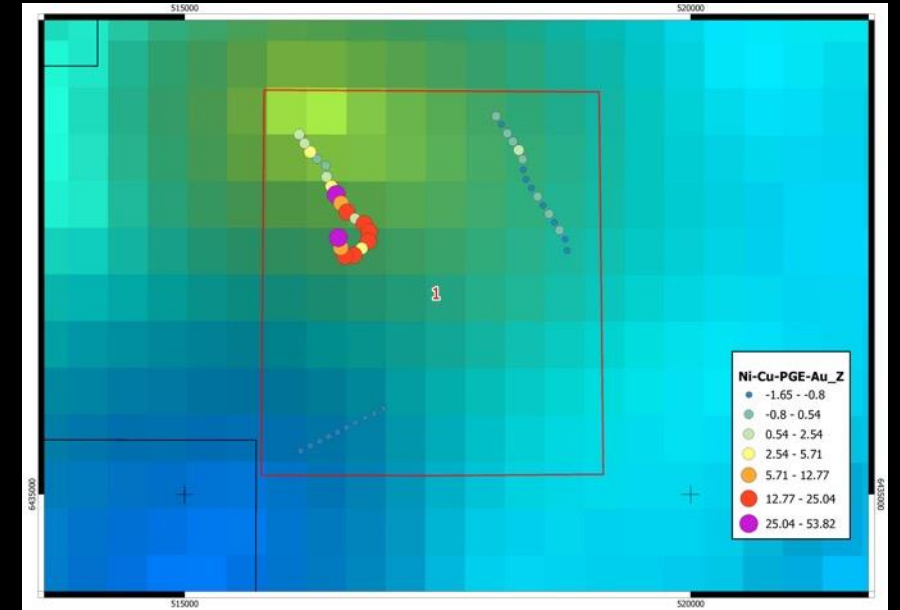
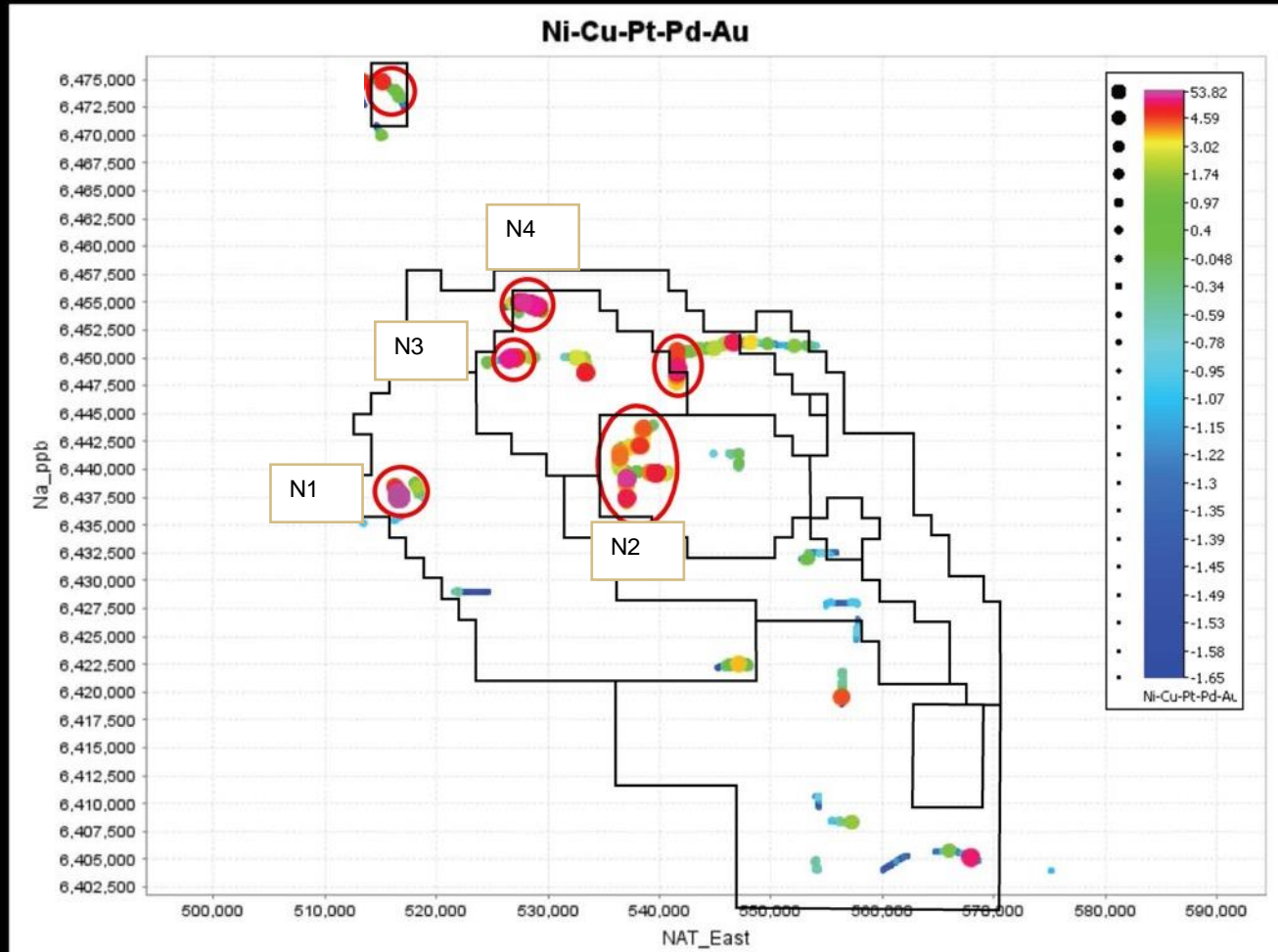
Julimar

Newleyine



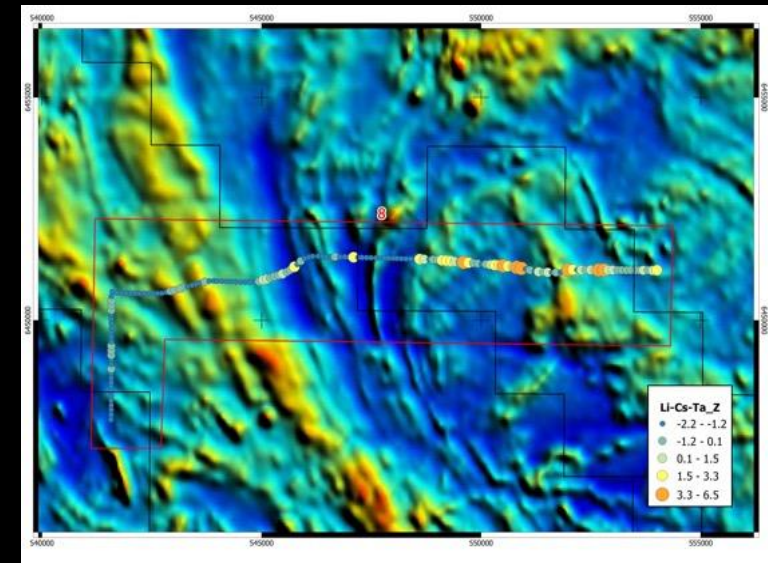
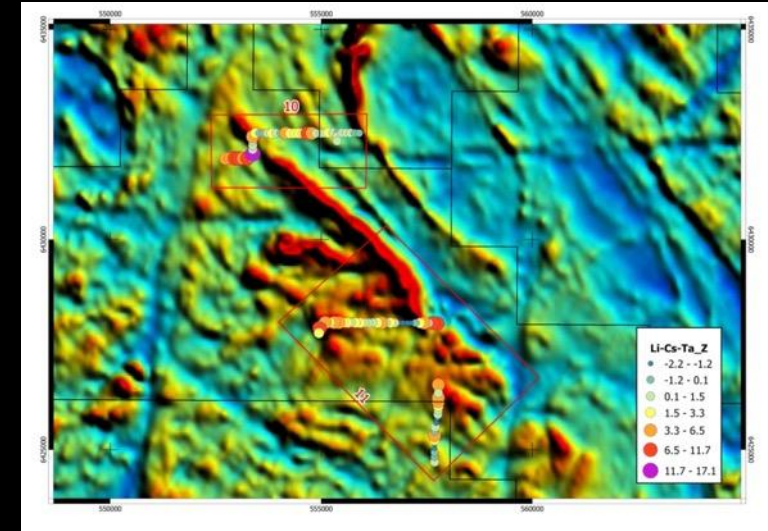
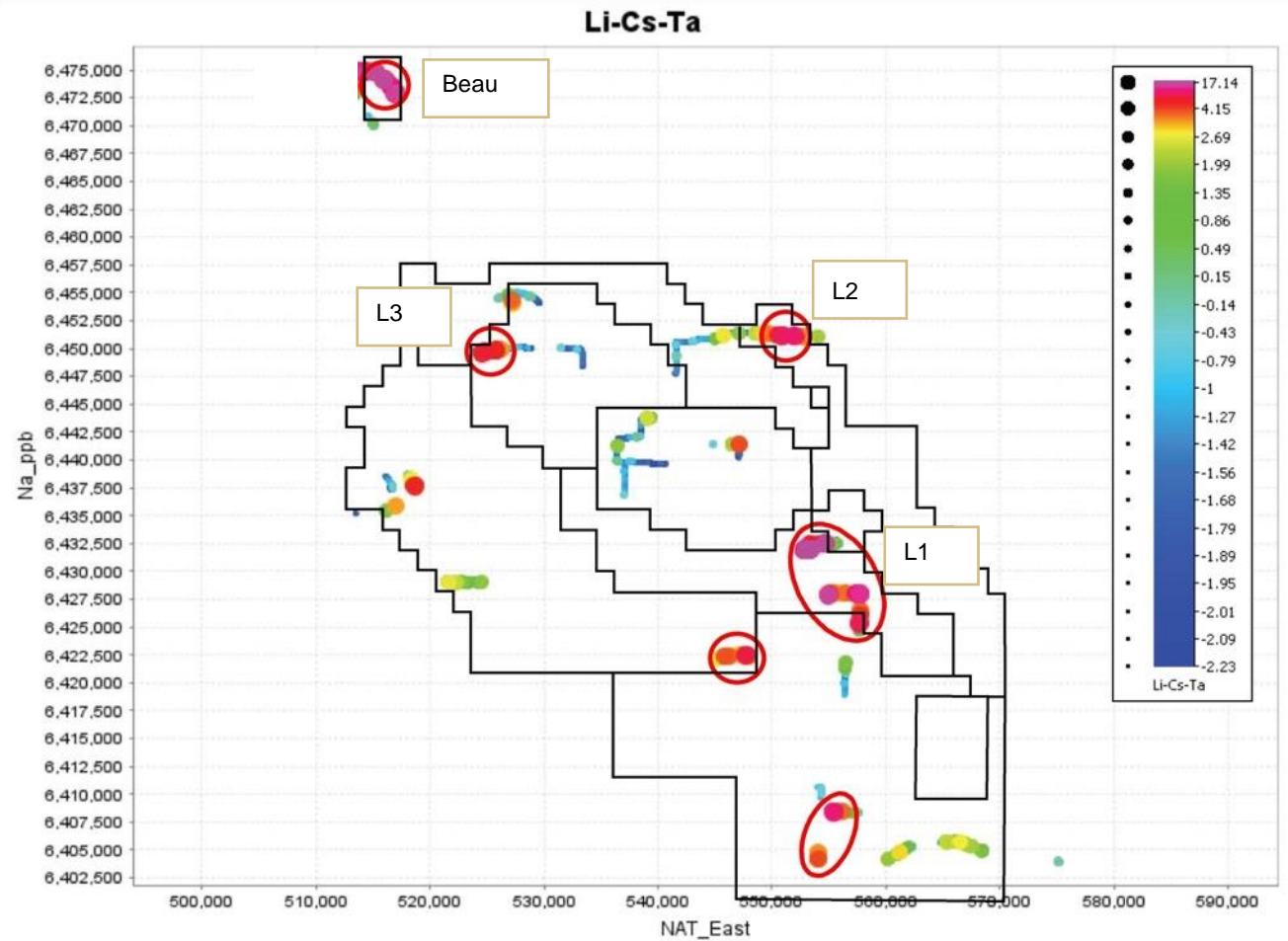
Arkun Project⁴

Ni-Cu-PGM-Au



Arkun Project⁴

LCT Pegmatites



Beau⁵

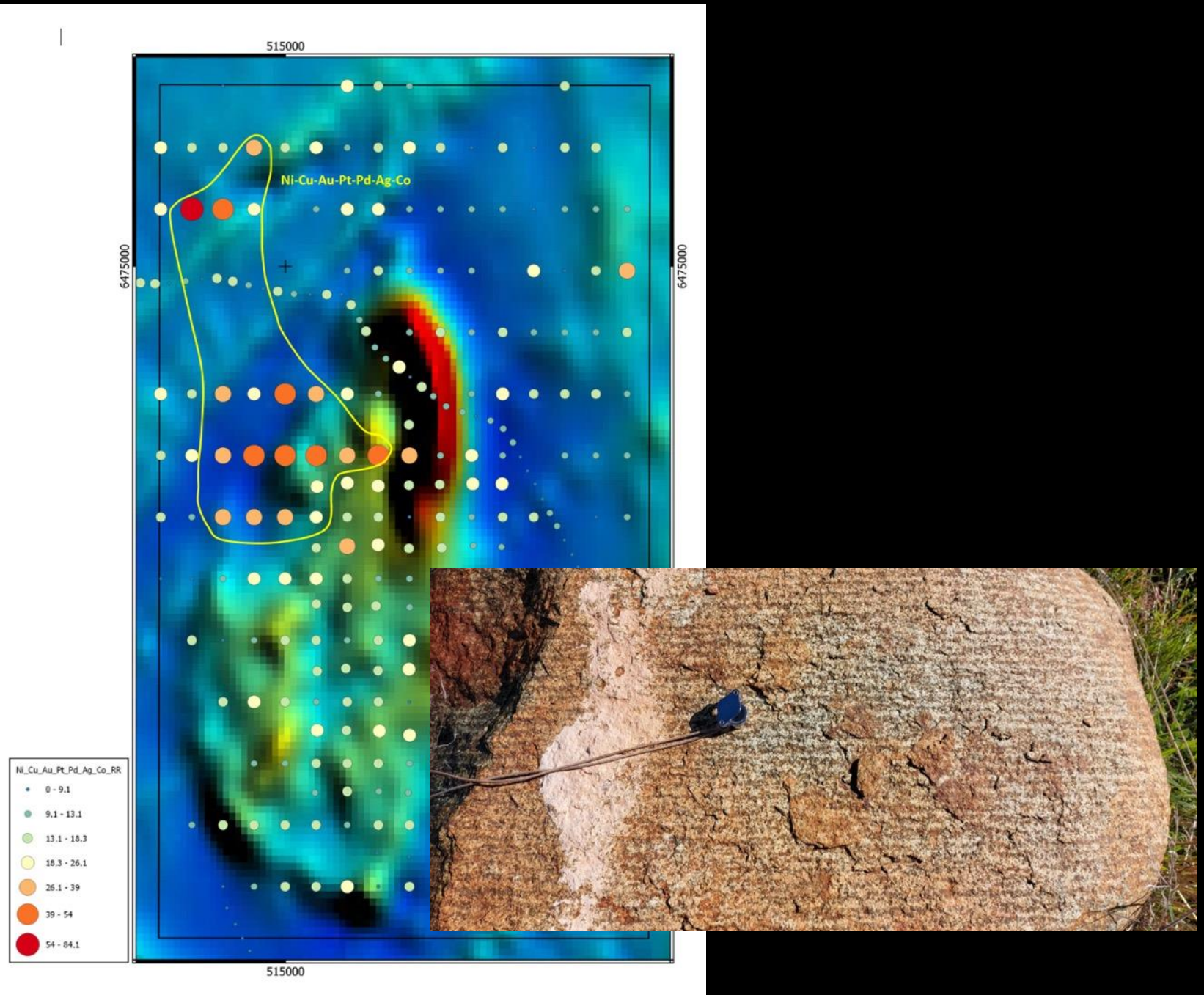
Drill targets for:

Ni-Cu-PGE

Au

Li

Drilling Q1 2023

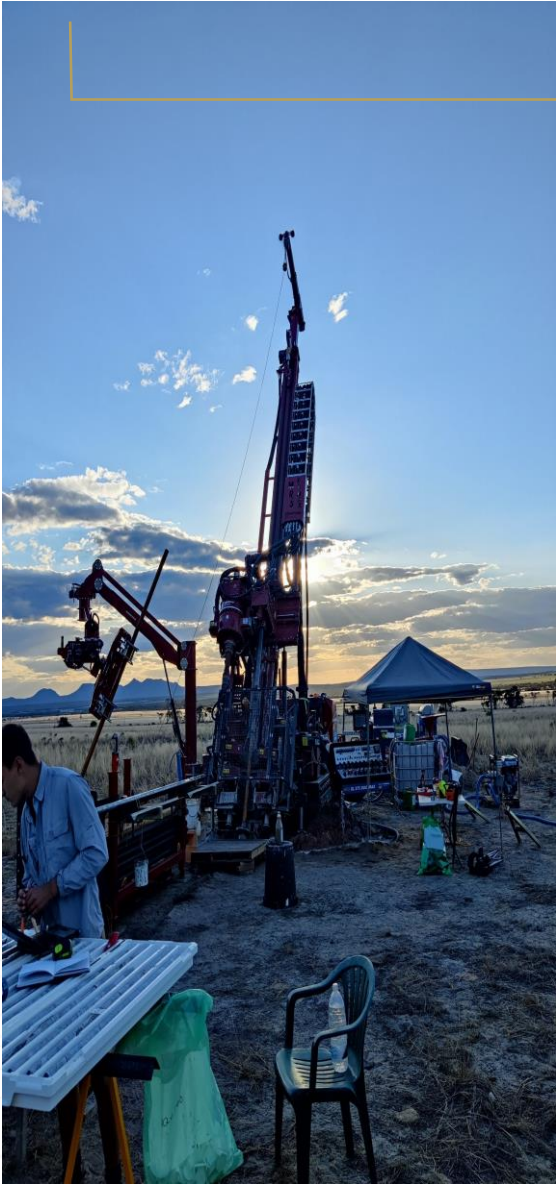


JORC Compliance

The information in this presentation relating to Exploration Results has been extracted from the following reports:

ASX Release Date	Title of ASX Release
1. 17 January 2023	Impact selected to participate in the BHP Xplor Programme
2. 8 December 2015	Exceptional Zinc-Silver Grades at Red Hill
3. 8 December 2021	Impact significantly expands its WA Projects
4. 21 September 2021	Outstanding Soil Geochemistry Results at Arkun
5. 18 August 2022	Outstanding soil results at Beau

Disclaimer



What You Should Know

Find out more – This presentation is being used as a presenter's aid with summarised information. See Impact's other periodic and continuous disclosure announcements lodged with the Australian Securities Exchange, which are available at www.asx.com.au or www.impactminerals.com.au, for more information.

Third party information – Impact does not make any representations as to the accuracy or otherwise of third party information, including where projections are given.

Forward-looking statements – Within this presentation there may be certain forward-looking statements, opinions and estimates. These are based on assumptions and contingencies which are subject to change without notice and are not guarantees of future performance. Impact assumes no obligation to update such information.

Taking action – Please undertake your own evaluation of the information in this presentation and contact your professional advisers if you wish to buy or sell Impact shares.

Competent Person Statement and JORC Compliance

Exploration Results: *The review of exploration activities and results contained in this report is based on information compiled by Dr Mike Jones, a Member of the Australian Institute of Geoscientists. He is a director of the company and works for Impact Minerals Limited. He has sufficient experience which is relevant to the style of mineralisation and types of deposits under consideration and to the activity which he is undertaking to qualify as a Competent Person as defined in the 2012 edition of the Australasian Code for Reporting of Exploration Results, Mineral Resources and Ore Reserves (the JORC Code). Mike Jones has consented to the inclusion in the report of the matters based on his information in the form and context in which it appears.*

The ASX Releases referenced within this presentation are available on the Impact Minerals website at www.impactminerals.com.au. The Company confirms that it is not aware of any new information or data that materially affects the information included in the most recent market announcement for each project, and in the case of Mineral Resources and Ore Reserves, that all material assumptions and technical parameters underpinning the estimates in the relevant market announcement continue to apply and have not materially changed. The Company confirms that the form and context on which the Competent Person's findings are presented have not materially changed from the original market announcement.